



Series 514 TO Collet Sockets

FEATURES:

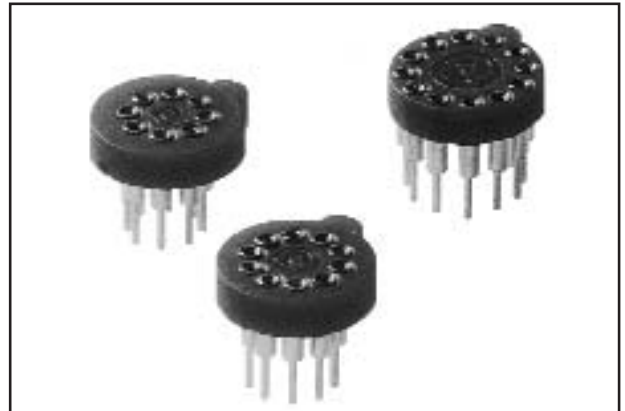
- Aries' TO sockets feature molded chamfer lead-ins for easy device insertion.
- High stand-off design for heat dissipation and easy cleaning.
- External polarization for positive location.

SPECIFICATIONS:

- Body material is black UL 94-V0 Glass-filled 4/6 Nylon.
- Pin body is Brass Alloy 360 1/2 hard per UNS C36000 ASTM-B16-00.
- Pin body plating:
-10TL is 200 μ [5.08 μ m] min. 93/7 Tin/Lead per ASTM B545 over 100 μ [2.54 μ m] min. Nickel per SAE-AMS-QQ-N-290.
-10 is 200 μ [5.08 μ m] min. Tin per ASTM B545 Type 1 over 100 μ [2.54 μ m] min. Nickel per SAE-AMS-QQ-N-290.
- 4-fingered collet contact is Beryllium Copper Alloy per UNS C17200 ASTM-B194-01.
- Contact plating is 30 μ [7.6 μ m] min. Gold per MIL-G-45204 over 50 μ [1.27 μ m] Nickel per SAE-AMS-QQ-N-290.
- Contact current rating=3 Amps.
- Operating temperature= -67°F to 221°F [-55°C to 105°C].
- Insertion Force=180 grams/pin; Withdrawal Force=90 grams/pin; Normal Force=140 grams/pin; based on a .018 [.46] diameter test lead.
- Socket accepts leads .015-.025 [.38-.64] in diameter, .137-.180 [3.48-4.57] long.

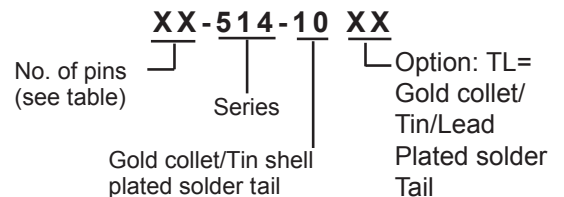
MOUNTING CONSIDERATIONS:

- Suggested PCB hole size=.030 \pm .002 [.76 \pm .05] dia.



Note: Aries specializes in custom design and production. In addition to the standard products shown on this page, special materials, platings, sizes, and configurations can be furnished, depending on quantities. Aries reserves the right to change product specifications without notice.

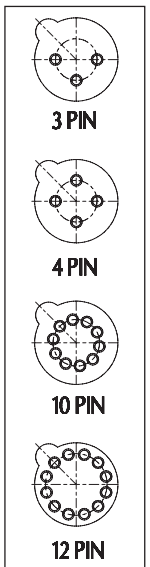
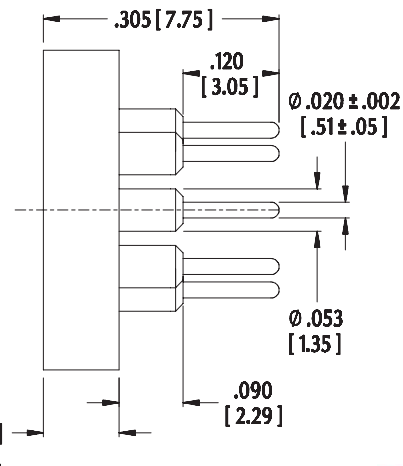
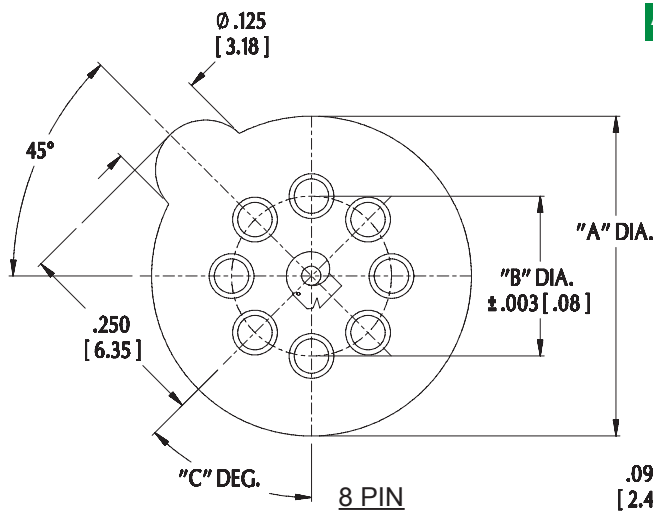
ORDERING INFORMATION



No. of Pins	Catalog No.	Outside Dia. "A"	Pin Pattern Dia. "B"	Pin to Pin Angle "C"
3	03-514-10	.400 [10.16]	.200 [5.08]	90
4	04-514-10	.400 [10.16]	.200 [5.08]	90
8	08S-514-10	.400 [10.16]	.200 [5.08]	45
8	08L-514-10	.400 [10.16]	.230 [5.84]	45
10	10-514-10	.400 [10.16]	.230 [5.84]	36
12	12-514-10	.405 [10.23]	.300 [7.62]	30

All tolerances \pm .005 [.13] unless otherwise specified

ALL DIMENSIONS: INCHES [MILLIMETERS]



ARIES
ELECTRONICS, INC.
<http://www.arieselec.com> • info@arieselec.com

Bristol, PA USA
TEL: (215) 781-9956
FAX: (215) 781-9845



14006
REV. E