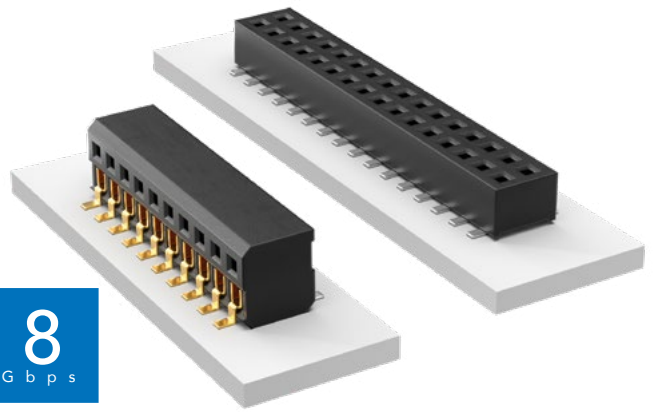


LOW-PROFILE DUAL WIPE SOCKET

8
Gbps



(1.27 mm) .050" PITCH • CLP SERIES

CLP

Mates:

FTSH, FTS, FW



02 thru 50

SPECIFICATIONS

Insulator Material:
Black Liquid Crystal Polymer
Contact Material:
Phosphor Bronze
Plating:
Sn or Au over
50 μ" (1.27 μm) Ni
Current Rating (CLP/FTSH):
3.4 A per pin
(2 pins powered)
Voltage Rating:
280 VAC/395 VDC
Operating Temp Range:
-55 °C to +125 °C
Insertion Depth:
Top Entry =
(1.40 mm) .055" minimum
Bottom Entry =
(2.41 mm) .095" minimum
plus board thickness
DH Entry =
(2.31 mm) .091" to (2.67 mm) .105"
Normal Force:
60 grams (0.59 N) average
Max Cycles:
100 with 10 μ" (0.25 μm) Au

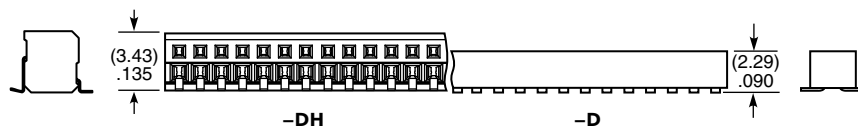
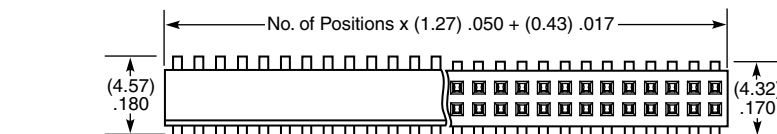
PROCESSING

Lead-Free Solderable:
Yes
SMT Lead Coplanarity:
(0.10 mm) .004" max (02-35)
(0.15 mm) .006" max (36-50)*
*(.004" stencil solution
may be available; contact
ipg@samtec.com)

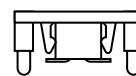
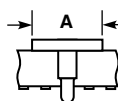
ALSO AVAILABLE

MOQ Required

Single row
Other platings



PIN/ROW	A
04-15	(3.56) .140
16-50	(7.11) .280



-PA OPTION



-P OPTION

If odd pins/row, alignment pins are on middle position on centerline of the part.
If even pins/row, then alignment pins are between middle two positions.

- F**
= Gold flash on contact, Matte Tin on tail
- L**
= 10 μ" (0.25 μm) Gold on contact, Matte Tin on tail
- G**
= 10 μ" (0.25 μm) Gold (-D only)

- D**
= Double Row
- DH**
= Double Horizontal (Requires FTSH-04 lead style)

- BE**
= Bottom Entry (Required for bottom entry applications)
- A**
= Alignment Pin (Not available with -PA option) (05, 06, 07, 08, 10, 12, 15, 20, 25, 30, 40 positions only) (-DH option and other sizes. Contact Samtec.)
- K**
= (4.00 mm) .157" DIA Polyimide film Pick & Place Pad (3 positions minimum)
- P**
= Pick & Place Pad (5 positions min. -D only) (Not always necessary for auto placement. See Flex Processing.)
- PA**
= Pick & Place Pad with Alignment Pin (-D only) (Not available with -A option)

- TR**
= Tape & Reel
- FR**
= Full Reel Tape & Reel (must order maximum quantity per reel; contact Samtec for quantity breaks)

Note:
Some lengths, styles and options are non-standard, non-returnable.