
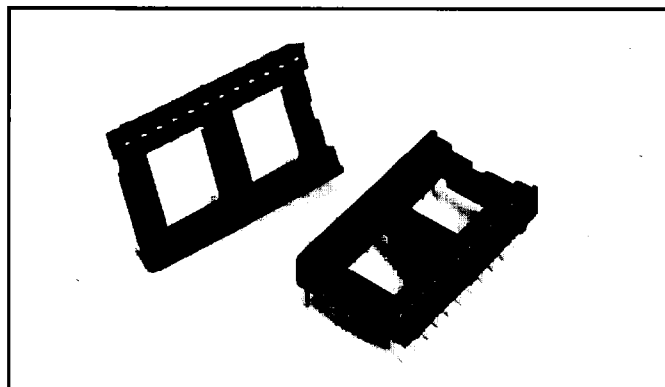


200C Series *Stamped Single Beam Contact Closed Bottom DIP Sockets*

Augat 200C Series single beam face wipe contact provides maximum normal force and consistent mechanical performance in Augat's lowest cost socket.

FEATURES:

- Non-wicking, closed bottom design gives protection against solder contamination.
- Protected open entry for easy insertion of ICs by hand or by automatic insertion.
- Anti-overstress design protects contacts, helps eliminate damage from oversize leads and maintains consistent normal force.
- High normal force results in gas tight connections.
-  Recognized under the Component Program of Underwriters Laboratories, Inc. file no. E111362.



MATERIAL SPECIFICATIONS:

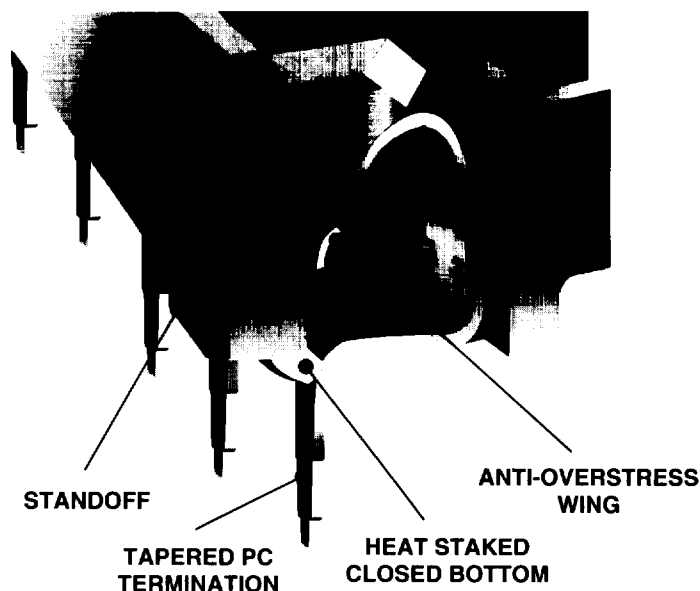
Insulator Thermoplastic polyester rated 94V-0
 Contacts Phosphor bronze (per QQ-B-750) beryllium copper (per QQ-C-533)
 Plating Tin/lead (per MIL-P-81728)

TYPICAL PERFORMANCE CHARACTERISTICS:

(Reference Augat 200C Test Report)

Contact Resistance 10 Milliohms max.
 Contact Rating 2 Amps
 Capacitance (Adjacent Contacts-Max.) 5 pF Per MIL-STD-202, Method 305
 Insulation Resistance 2 x 10⁶ Megohms per MIL-STD-1344, Method 3003.1
 Dielectric Withstanding Voltage (DWV) ... 1000 Volts (RMS) per MIL-STD-1344, Method 3001
 Operation Temperature -55° to +105°C
 Normal Force 218 Grams with a 0.009" x 0.015" IC lead (typ.)
 Contact Retention 340 Grams minimum
 Insertion Force 169 Grams (6.0 oz.) average with a 0.0013" x 0.020" polished steel pin
 Withdrawal Force 43 Grams (1.5 oz.) average with a 0.009" x 0.015" polished steel pin

**PROTECTED
OPEN ENTRY**



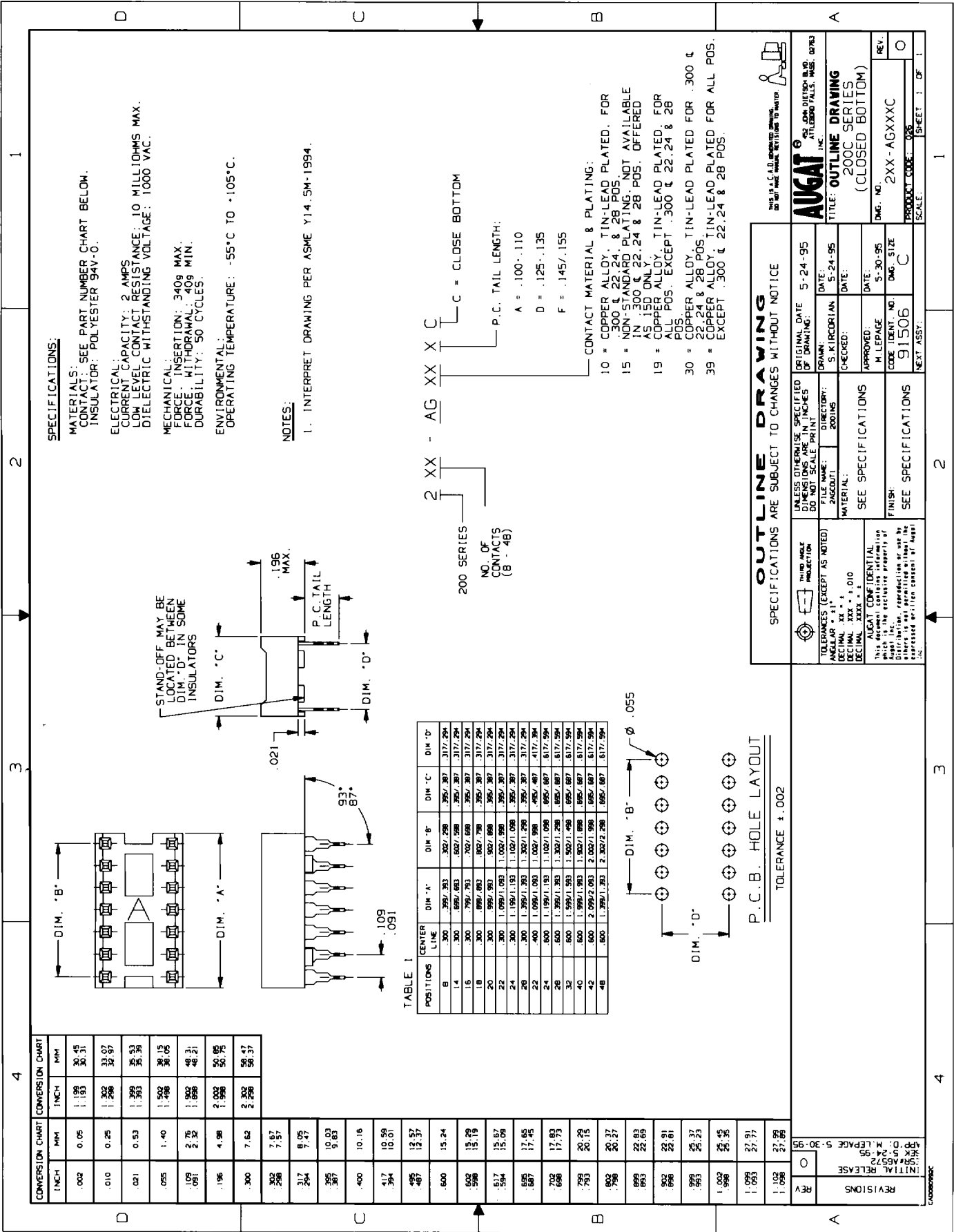
AUG15016

Specifications subject to change without notice
 © Augat Inc. Printed in USA 590306 5315A

AUGAT Inc. 452 John Dietsch Blvd., Attleboro Falls, MA 02763 (508) 699-9800 Fax: (508) 699-6717

AUGAT®
Quality and Innovation
 Interconnection Products Division

200C Series



SPECIFICATIONS:

MATERIALS: SEE PART NUMBER CHART BELOW.
CONTACT: POLYESTER 94V-0.

ELECTRICAL:
CURRENT CAPACITY: 2 AMPS
LOW LEVEL CONTACT RESISTANCE: 10 MILLIOHMS MAX.
DIELECTRIC WITHSTANDING VOLTAGE: 1000 VAC.

MECHANICAL:
FORCE, INSERTION: 340g MAX.
FORCE, WITHDRAWAL: 40g MIN.
DURABILITY: 50 CYCLES.

ENVIRONMENTAL:
OPERATING TEMPERATURE: -55°C TO +105°C.

NOTES:

1. INTERPRET DRAWING PER ASME Y14.5M-1994.

2 XX - AG XX X C
200 SERIES
NO. OF CONTACTS (B - 48)
P.C. TAIL LENGTH:
A = .100 ± .110
D = .125 ± .135
F = .145 ± .155
C = CLOSE BOTTOM

CONTACT MATERIAL & PLATING:
10 = COPPER ALLOY, TIN-LEAD PLATED, FOR .300 & 22.24 & 28 POS.
15 = NON-STANDARD PLATING NOT AVAILABLE IN .300 & 22.24 & 28 POS. OFFERED AS 15D ONLY.
19 = COPPER ALLOY, TIN-LEAD PLATED, FOR ALL POS. EXCEPT .300 & 22.24 & 28 POS.
30 = COPPER ALLOY, TIN-LEAD PLATED FOR .300 & 22.24 & 28 POS.
39 = COPPER ALLOY, TIN-LEAD PLATED FOR ALL POS. EXCEPT .300 & 22.24 & 28 POS.

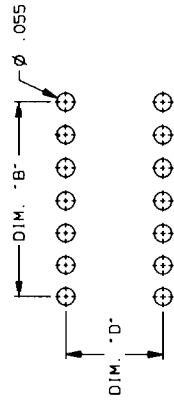
OUTLINE DRAWING
SPECIFICATIONS ARE SUBJECT TO CHANGES WITHOUT NOTICE

UNLESS OTHERWISE SPECIFIED DIMENSIONS ARE IN INCHES DIMENSIONS IN PARENTHESES ARE IN MILLIMETERS	ORIGINAL DATE: 5-24-95
FILE NAME: 200001	DRAWN: S. KIRKORIAN
DIRECTORY: 200001	CHECKED: DATE:
MATERIAL: SEE SPECIFICATIONS	APPROVED: DATE: 5-30-95
FINISH: SEE SPECIFICATIONS	CODE IDENT. NO.: 91506
	DWG. NO.: 2XX-AGXXX
	PRODUCT CODE: 028
	SCALE: SHEET 1 OF 1

TABLE 1

POSITIONS	CENTER LINE	DIM. 'A'	DIM. 'B'	DIM. 'C'	DIM. 'D'
B	300	.350/353	.302/298	.395/387	.317/294
14	300	.695/683	.602/598	.395/387	.317/294
15	300	.795/793	.702/698	.395/387	.317/294
18	300	.695/683	.602/598	.395/387	.317/294
20	300	.995/993	.902/898	.395/387	.317/294
22	300	1.095/1.093	1.002/998	.395/387	.317/294
24	300	1.195/1.193	1.102/1.098	.395/387	.317/294
26	300	1.295/1.293	1.202/1.298	.395/387	.317/294
28	300	1.395/1.393	1.302/1.298	.395/387	.317/294
22	400	1.095/1.093	1.002/998	.495/487	.417/394
24	400	1.195/1.193	1.102/1.098	.495/487	.417/394
26	400	1.295/1.293	1.202/1.298	.495/487	.417/394
28	400	1.395/1.393	1.302/1.298	.495/487	.417/394
32	400	1.595/1.593	1.502/1.498	.495/487	.417/394
40	400	1.995/1.993	1.902/1.898	.495/487	.417/394
42	400	2.095/2.093	2.002/1.998	.495/487	.417/394
48	400	1.395/1.393	2.302/2.298	.495/487	.417/394

P.C.B. HOLE LAYOUT
TOLERANCE ±.002

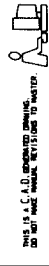


CONVERSION CHART

INCH	MM	INCH	MM
.002	0.05	1.18	30.41
.010	0.25	1.298	32.97
.021	0.53	1.393	35.33
.05	1.40	1.502	38.15
.075	2.75	1.486	38.05
.081	2.75	1.686	48.31
.196	4.98	1.996	50.95
.300	7.62	2.302	58.47
.302	7.57		56.37
.394	8.05		7.47
.395	10.03		9.83
.487	12.37		10.16
.600	15.24		17.45
.602	15.79		17.73
.617	15.87		20.29
.685	17.45		20.15
.686	17.73		20.37
.699	22.83		22.69
.699	22.69		22.81
.999	25.37		25.35
1.002	25.45		27.91
1.093	27.91		27.99
1.102	27.99		

REVISIONS

REV	DATE	BY	DESCRIPTION
1			
2			
3			
4			
5			



UNLESS OTHERWISE SPECIFIED DIMENSIONS ARE IN INCHES
DIMENSIONS IN PARENTHESES ARE IN MILLIMETERS

AUGAT INC.
TITLE: OUTLINE DRAWING
(CLOSED BOTTOM)
200C SERIES

DWG. NO. 2XX-AGXXX
REV. 0
PRODUCT CODE: 028
SCALE: SHEET 1 OF 1