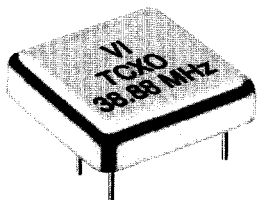


Solder Seal TCXOs

P1 and P2 Series Solder Seal TCXO Small Package (1.0" SQ.)



Output Options:
 TC = LS TTL = .01 to 160 MHz +5.0V
 HC = HCMOS = .01 to 160 MHz +5.0V
 RB = +4 dBm 50Ω = 4 to 160 MHz +12.0V

Input:
 +5.0V
 +5.0V
 +12.0V

Screening Options:
 C= Commercial
 B= Class "B" per MIL-O-55310

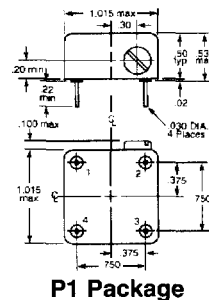
Stability Options
 A17 = ±0.1 PPM 0° to +50°C
 A16 = ±1.0 PPM 0° to +50°C
 B16 = ±1.0 PPM 0° to +70°C
 BB6 = ±2.5 PPM 0° to +70°C
 D57 = ±0.5 PPM -40° to +85°C
 D16 = ±1.0 PPM -40° to +85°C

P2 Package
 Pin 1 = Output
 Pin 2 = Tune
 Pin 3 = Gnd, Case
 Pin 4 = Supply

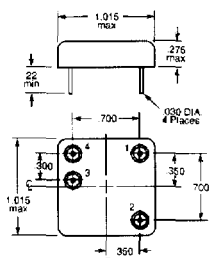
P1 Package
 Pin 1 = Output
 Pin 2 = Gnd, Case
 Pin 3 = Gnd, Case*
 Pin 4 = Supply

Typical P/N: HC P2 HO D16 C 12.800 MHz
 HO is predetermined

Note: Not all stabilities are available in all output options. Oscillatek does not recommend wave soldering, IR reflow or other elevated temperature processing without consulting the factory.



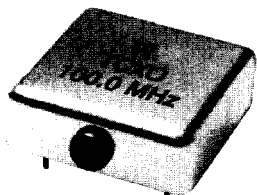
P1 Package



P2 Package

Note: dimensions in inches

R1-Series Solder Seal TCXO Mid-Size Package



Output Options:
 TD = TTL = .01 to 160 MHz +5.0V
 HC = HCMOS = .01 to 160 MHz +5.0V
 RB = +4 dBm 50Ω = .01 to 160 MHz +12.0V
 EH = ECL 10 KH = .01 to 220 MHz -5.2V

Input:
 +5.0V
 +5.0V
 +12.0V
 -5.2V

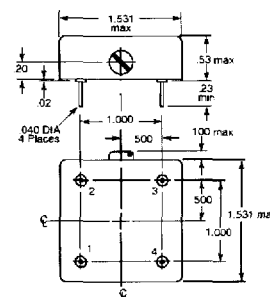
Screening Options:
 C= Commercial
 B= Class "B" per MIL-O-55310

Stability Options
 A17 = ±0.1 PPM 0° to +50°C
 A16 = ±1.0 PPM 0° to +50°C
 B16 = ±1.0 PPM 0° to +70°C
 BB6 = ±2.5 PPM 0° to +70°C
 D57 = ±0.5 PPM -40° to +85°C
 D16 = ±1.0 PPM -40° to +85°C
 FB6 = ±2.5 PPM -55° to +105°C

Pinouts
 TD HC RB EH
 Pin 1 = Output
 Pin 2 = Supply
 Pin 3 = Gnd, Case
 Pin 4 = Gnd, Case*

Typical P/N: EH R1 HO B16 C 120.00 MHz
 HO is predetermined

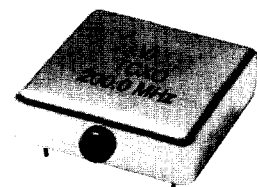
Note: Not all stabilities are available in all output options. Oscillatek does not recommend wave soldering, IR reflow or other elevated temperature processing without consulting the factory.



R1 Package

Note: dimensions in inches

S6-Series Solder Seal TCXO Large Package



Output Options:
 TD = TTL = .01 to 160 MHz +5.0V
 HC = HCMOS = .01 to 160 MHz +5.0V
 AC = CMOS AC = .01 to 160 MHz +5.0V
 RB = +4 dBm 50Ω = .01 to 225 MHz +12.0V
 EH = ECL 10 KH = .01 to 225 MHz -5.2V

Input:
 +5.0V
 +5.0V
 +5.0V
 +12.0V
 -5.2V

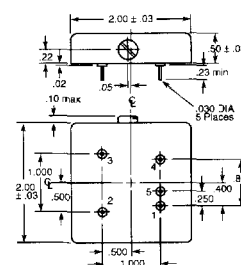
Screening Options:
 C= Commercial
 B= Class "B" per MIL-O-55310

Stability Options
 A17 = ±0.1 PPM 0° to +50°C
 A16 = ±1.0 PPM 0° to +50°C
 BB7 = ±0.25 PPM 0° to +70°C
 B16 = ±1.0 PPM 0° to +70°C
 D57 = ±0.5 PPM -40° to +85°C
 D16 = ±1.0 PPM -40° to +85°C
 FB6 = ±2.5 PPM -55° to +105°C
 FB6 = ±5.0 PPM -55° to +125°C

Pinouts
 TD HC AC RB EH
 Pin 1 = Output
 Pin 2 = Supply
 Pin 3 = Gnd, Case
 Pin 4 = Gnd, Case
 Pin 5 = Gnd, Case*

Typical P/N: RB S6 H2 B16 C 70.00 MHz
 H2 is predetermined

Note: Not all stabilities are available in all output options. Oscillatek does not recommend wave soldering, IR reflow or other elevated temperature processing without consulting the factory.



S6 Package

Note: dimensions in inches