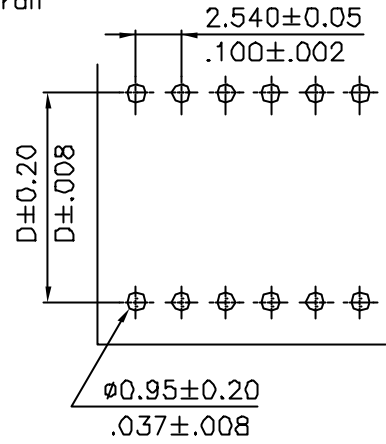
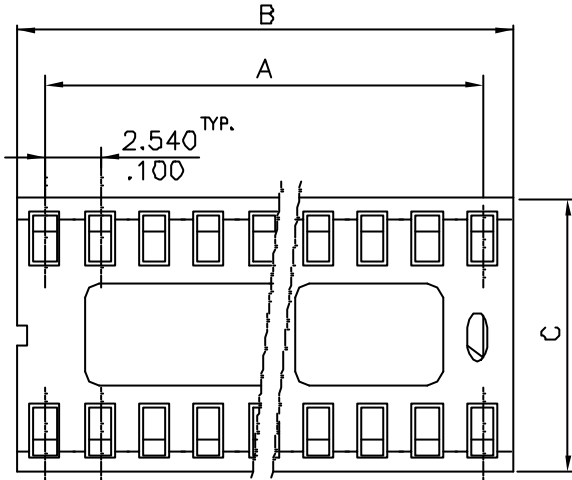


Material :

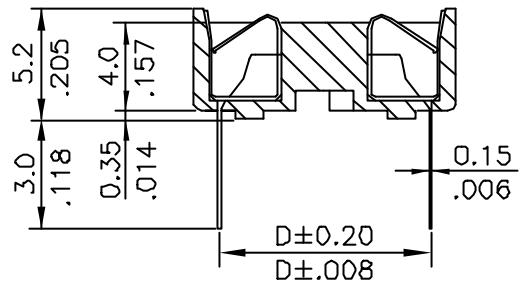
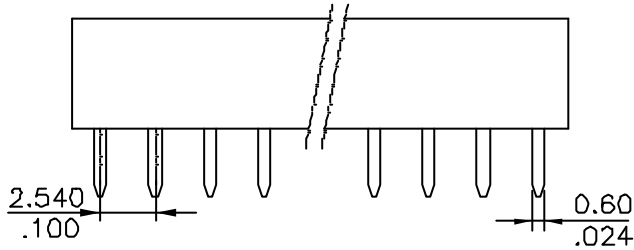
Insulator: PBT UL94V-0

Contact: Phosphor Bronze

Plating: Tin Plated 120?" min. over 30~50?" nickel overall



Recommended Hole Pattern



Part No.	Dim.A	Dim.B	Dim.C	Dim.D
8300-06AT00	5.080(.200)	7.5(.295)	9.9(.390)	7.620(.300)
8300-08AT00	7.620(.300)	10.0(.394)	9.9(.390)	7.620(.300)
8300-14AT00	15.240(.600)	17.6(.693)	9.9(.390)	7.620(.300)
8300-16AT00	17.780(.700)	20.2(.795)	9.9(.390)	7.620(.300)
8300-18AT00	20.320(.800)	22.7(.894)	9.9(.390)	7.620(.300)
8300-20AT00	22.860(.900)	25.3(.996)	9.9(.390)	7.620(.300)
8300-22AT00	25.400(1.000)	27.8(1.094)	9.9(.390)	7.620(.300)
8300-24AT00	27.940(1.100)	30.3(1.193)	17.6(.693)	15.240(.600)
8300-28AT00	33.020(1.300)	35.4(1.394)	17.6(.693)	15.240(.600)
8300-32AT00	38.100(1.500)	40.5(1.594)	17.6(.693)	15.240(.600)
8300-40AT00	48.260(1.900)	50.7(1.996)	17.6(.693)	15.240(.600)
8300-42AT00	50.800(2.000)	53.0(2.094)	17.6(.693)	15.240(.600)
8300-48AT00	58.420(2.300)	60.8(2.394)	17.6(.693)	15.240(.600)

G	E971002			LECO CORPORATION	APPROVED BY:	PART NO.:				
F	E970272				GENERAL TOLERANCE	CHECKED BY:	8300-**AT00			
E	E970213			X. ±	X' ± 2'	TITLE: 2.54mm(.100") Dual In Line Ic Socket				
D	E970200			.X ± $\frac{0.30}{.012}$.X' ±					DRAWING NO.:
C	E970181			.XX ± $\frac{0.20}{.008}$.XX' ±	830004S				
REV.	ECO. NO.	CHG	APPD.	.XXX ± $\frac{0.10}{.004}$.XXX' ±					UNITS MM inch
						~	A4	1/1	G	