



Current Sense

SwitchmodePower

Features

- SMD Design
- Pick and place compatible
- 250kHz and above operating frequency
- Small footprint
- Custom designs available
- Designed for switching power supply applications
- Industrial equipment

Applications

- Isolated current feedback in switching applications
- Load drop detection
- Circuit overload detection
- Motor operation monitoring
- Industrial equipment

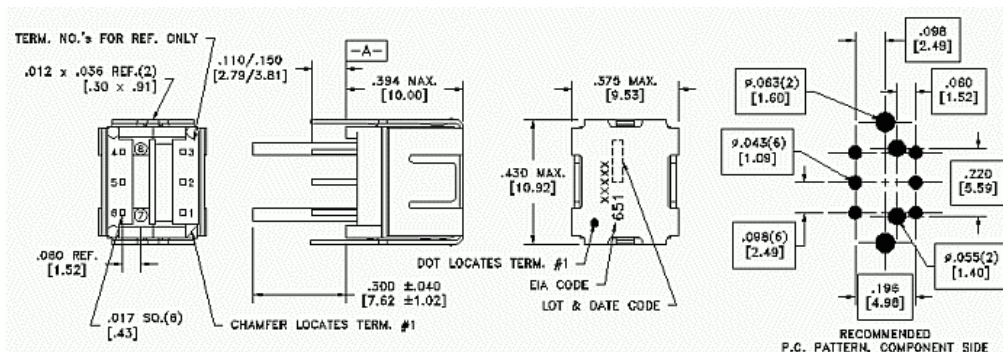
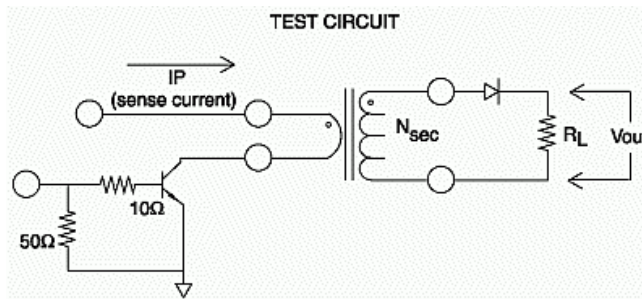
Environmental Specifications

- Operating Temp: -40°C to +85°C
- Storage Temp: -40°C to +125°C

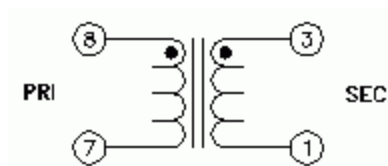
Packaging

- Parts are packaged in 24/32mm embossed carrier tape per EIA-481-3
- 800 parts per 13" reel

Part Number	Inductance (mH)	Peak Sense Current (A)	Turns Ratio	Package Style	Pin Style	RoHS	Mechanical	Schematic
31027	20.5	10	1:75	EP7	TH	NO	1	1
31028	36.4	10	1:100	EP7	TH	NO	1	1
31029	145.6	10	1:200	EP7	TH	NO	1	1



Mechanical 1



Schematic 1