

## 10T 14 PIN AUTO-INSERTABLE 5 TAP ACTIVE 14TD 14 PIN DIL 10 TAP ACTIVE

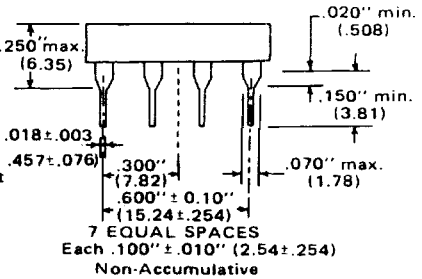
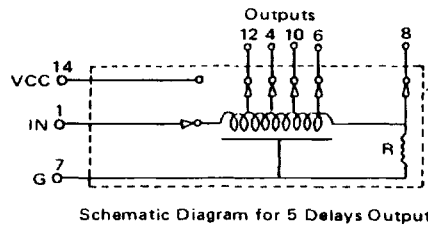
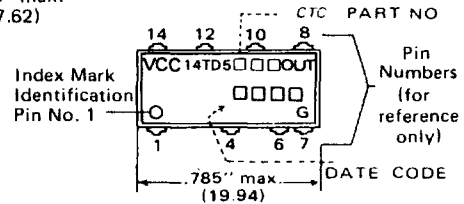
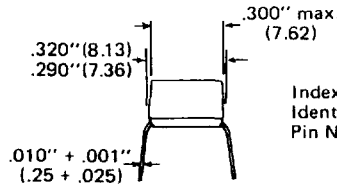
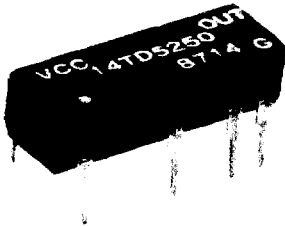
### 14TD

#### SPECIFICATIONS:

- Operating temperature range 0 °C to +70 °C. (-55 °C to +125 °C on request).
- Supply voltage: 5.0 ± 0.25 VDC.
- Supply Current: ICCH 30mA max. ICCL 60mA max.
- Input pulse amplitude: 3.2 volts.
- Input pulse width: min 100% of total delay.
- Input pulse PPR: min 3 × pulse width.
- Input rise time: 2.0ns.
- Output rise time: 4.0ns max.

PART NO.	TOTAL DELAY (ns)	TAP TO TAP (ns)
14TD5200	20 ± 2	4 ± 2
14TD5250	25 ± 2	5 ± 2
14TD5300	30 ± 2	6 ± 2
14TD5400	40 ± 2	8 ± 2
14TD5500	50 ± 2.5	10 ± 2
14TD5600	60 ± 3	12 ± 2
14TD5750	75 ± 3.7	15 ± 2

PART NO.	TOTAL DELAY (ns)	TAP TO TAP (ns)
14TD5101	100 ± 5	20 ± 2
14TD5125	125 ± 6.2	25 ± 2
14TD5151	150 ± 7.5	30 ± 2
14TD5175	175 ± 8.7	35 ± 2
14TD5201	200 ± 10	40 ± 2
14TD5251	250 ± 12.5	50 ± 2.5
14TD5301	300 ± 15	60 ± 3



#### NOTES:

- (1) Delay measured at 1.5 volts on leading edge only with no loads on output.
- (2) Rise time measured from 0.75 volts to 2.4 volts.
- (3) Others upon request.

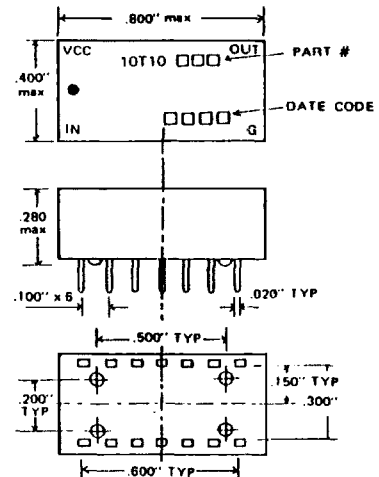
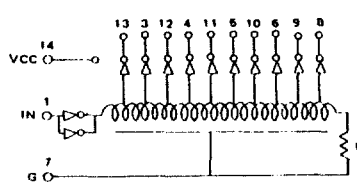
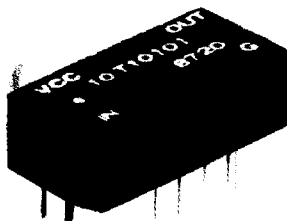
### 10T

#### SPECIFICATIONS:

- Low profile.
- Rise time: 4ns maximum.
- Ten(10)equally-spaced delay taps.
- Operating temperature range: 0 °C to +70 °C. (-55 °C to -125 °C on request).
- Voltage supply vcc: 5.0 ± 0.5 VDC.
- Input pulse voltage: 3.2v.
- Rise time of input pulse: 2.0ns.
- Duty cycle: 50% or less.
- Logic 1 of input: 50ua max, 2.0v min.
- Logic 0 of input: -2.0ma max, 0.8v max.
- Logic 1 of output: 4.0 ma max, 2.4V min.
- Logic 0 of output: 9.0ma max, 0.4v max.
- Logic 1 fanout: 20/tap max.
- Logic 0 fanout: 10/tap max.

PART NO.	TOTAL DELAY (ns)	TAP TO TAP (ns)
10T10500	50	5 ± 2
10T10101	100	10 ± 2
10T10151	150	15 ± 2
10T10251	200	20
10T10251	250	25

PART NO.	TOTAL DELAY (ns)	TAP TO TAP (ns)
10T10301	300	30
10T10351	350	35
10T10401	400	40
10T10451	450	45
10T10501	500	50



#### \*Customer Requirements On Request

- (1) Delay time measured at 1.5v level on leading edge with no loads on taps(load on request).
- (2) Rise time measured from 0.75v to 2.4v level.
- (3) Tap tolerances are indicated on above table.