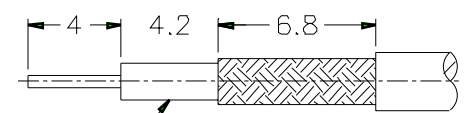
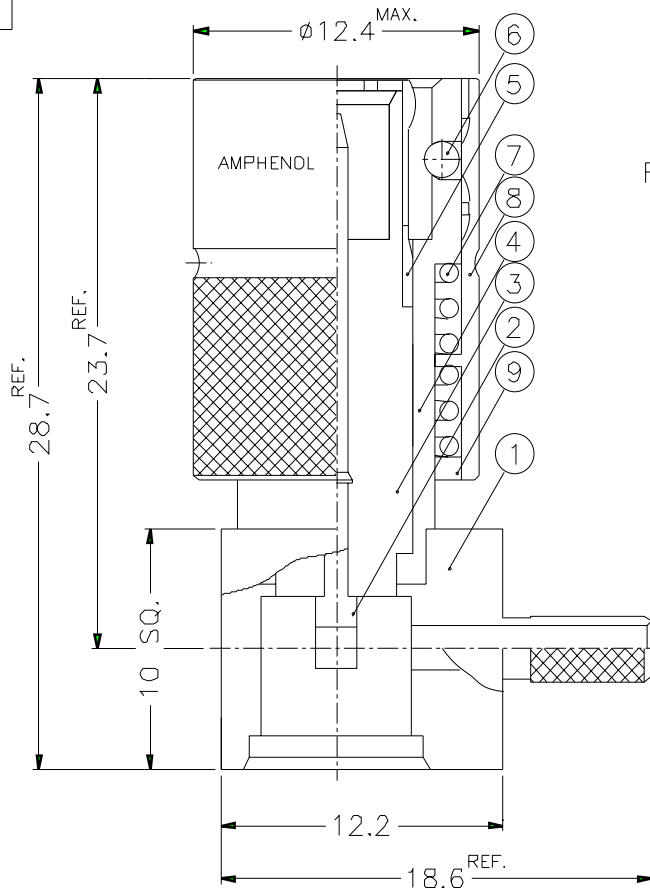


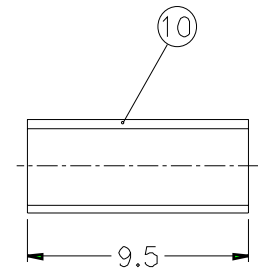
REVISIONS		
ISS	ZONE	DESCRIPTION\PER REQUEST\DATE

CABLES: -RG-179/U, 179A/U, 179B/U, 187A/U  
 -L45466-D12-C66  
 -GORE AND 3M CABLE  
 -RA-8000



REMOVE FOIL 1mm MIN.

RECOMMENDED  
CABLE STRIPPING DIM'S



1. CRIMPED FERRULE  
 HEX CRIMP SIZE .128"  
 2. CONTACT PIN TO SOLDER

11	COVER	BRASS	NICKEL	1	4G-061-00NS
10	FERRULE	COPPER	NICKEL	1	FR-39/32X95
9	RING	BRASS	NICKEL	1	4M-472-01
8	OUTER BODY	BRASS	NICKEL	1	3D-853-01
7	SPRING	SUS303	NATURAL	2	4M-473-01
6	BALL	SUS303	NATURAL	4	4M-169-01
5	OUT CONTACT	BRONZE	GOLD	1	3E-249-01
4	BODY	BRASS	NICKEL	1	1561112L1-4
3	INSULATOR	PTFE	NATURAL	1	1561112L1-3T-75
2	CONTACT PIN	BRASS	GOLD	1	1561112L1-2
1	HOUSING	BRASS	NICKEL	1	1561112L1-1-27/19

DIMENSIONS ARE IN MILLIMETERS

UNLESS OTHERWISE SPECIFIED  
TOLERANCES

- 0.5-6 = ±0.2
- 6-30 = ±0.4
- 30-120 = ±0.6
- 120-315 = ±1
- 315-1000 = ±1.6
- 1000-2000 = ±2.4

PART NO.	<b>1561112L2-E06</b>	
APPROVED	DATE	12-05-01'
CHECKED	DATE	12-05-01'
DRAWN	DATE	12-05-01'
FILE NO.	F:\DWG\156\1112L1\179U\75\N30GT30G	

<b>Amphenol RF</b>	
TITLE	1.6/5.6 R/A PUSH-PULL CRIMP PLUG
DRAWING NO.	KJ-1561112L2-N/30GT30G-179U-75
ITEM NO.	161112AAD19MN7F

NO.	DESCRIPTION	MATERIAL	FINISH	Q'TY	DRAWING NO.	SCALE	3/1	ISSUE	1	FILE NO.	F:\DWG\156\1112L1\179U\75\N30GT30G
-----	-------------	----------	--------	------	-------------	-------	-----	-------	---	----------	------------------------------------