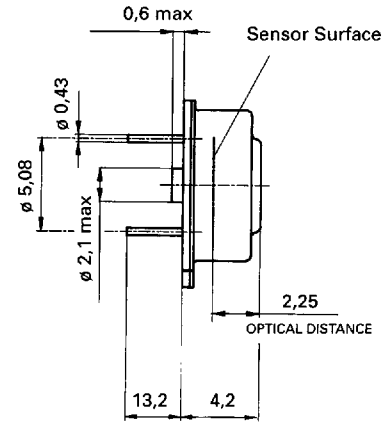
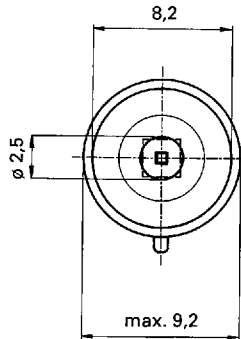
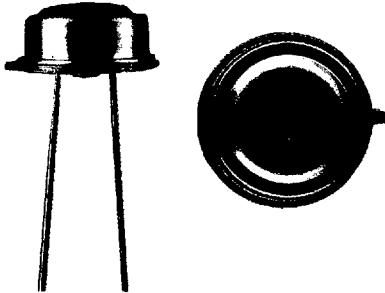


Thermopile Sensors Thermoelement Sensoren

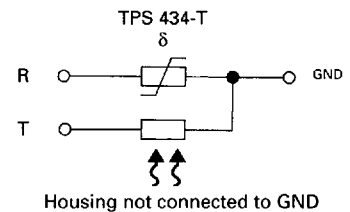
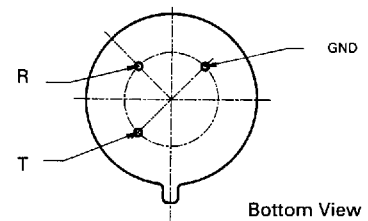
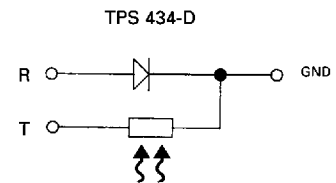
TPS 434-D, TPS 434-T



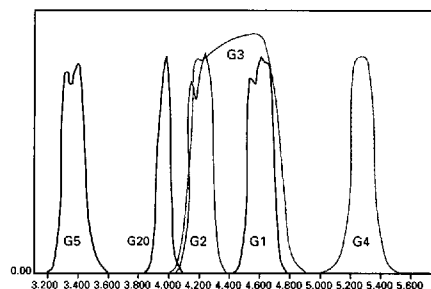
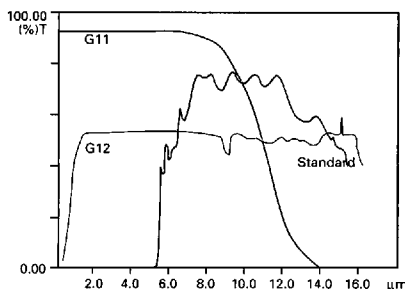
The thermopilesensor TPS 434 consists of a series of 40 thermoelements, analog to TPS 424. The TPS 434 is featured with an additional temperature reference. We are offering two different versions: type TPS 434-D with a diode reference output and type TPS 434-T with a thermistor reference output. The electrical data are in accordance with TPS 424. Like Heimann series LHi 807 the TPS 434 version is available with various optical filters.

Der Thermosensor TPS 434 besteht aus 40 hintereinander geschalteten Thermoelementen, analog zum TPS 424. Zusätzlich ist der TPS 434 mit einer Temperatur-Referenz ausgestattet. Zur Zeit werden zwei Versionen angeboten: TPS 434-D mit Referenzdiode und TPS 434-T mit Referenzthermistor. Die elektrischen Daten entsprechen der Reihe TPS 424. Ähnlich der Serie LHi 807 ist der TPS 434 mit verschiedenen Filtervarianten lieferbar.

Type	Application	Centre Wave Length (μm T > 75%)	Half Power Bandwidth (μm)	Transmission in Block range >10 μm
TPS 434-G1	CO	4,64 (= 0,05)	0,18 (=0,02)	λ_u 0,1% λ_o >1,0%
TPS 434-G2	CO ₂	4,24 (=0,05)	0,18 (=0,02)	λ_u 0,1% λ_o >1,0%
TPS 434-G3	CO - CO ₂	4,48 (=0,07)	0,62 (=0,06)	λ_u 0,1% λ_o >1,0%
TPS 434-G4	NO	5,30 (=0,05)	0,18 (=0,02)	λ_u 0,1% λ_o >1,0%
TPS 434-G5	HC	3,40 (=0,07)	0,18 (=0,02)	λ_u 0,1% λ_o >1,0%
TPS 434-G20	reference	4,00 \pm 0,08	0,09 \pm 0,02	λ_u 0,1% λ_o >1,0%
TPS 434-G11	broadband		0,1-13	CaFL
TPS 434-G12	broadband		1-16	Si



Available Filters



Signal against Field of View

