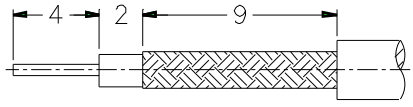
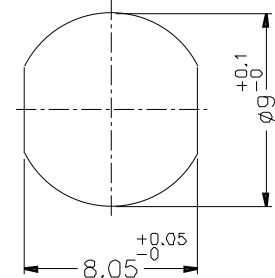


REVISIONS		
ISS	ZONE	DESCRIPTION\PER REQUEST\DATE



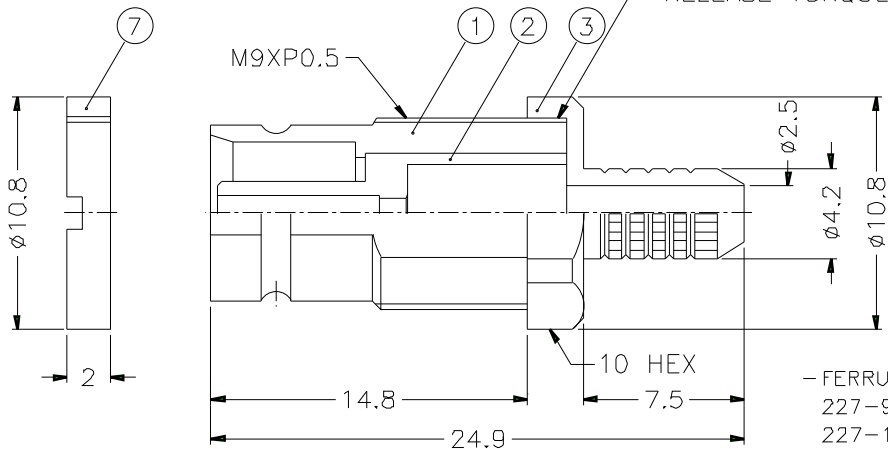
RECOMMENDED CABLE STRIPPING DIM'S



RECOMMENDED MOUNTING HOLE

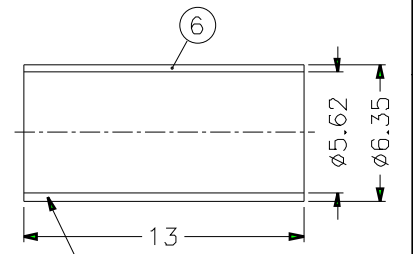
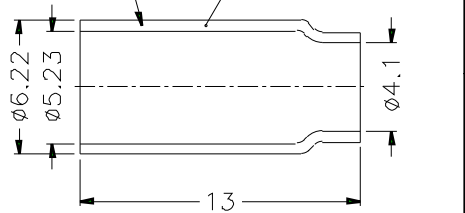
- CABLE: -BT 3002
 -L910/34
 -TR-SP.125
 -TR-SP.127
 -CEC BV 75-2

SCREW TORQUE 0.8 TO 1.2 N-m
 RELEASE TORQUE 0.8 N-m MIN.



PANEL THICKNESS: 3mm^{MAX.}

- FERRULE CRIMPING TOOLS P/N 227-944 (M22520/5-01)
- 227-1221-19B (M22520/5-19B) HEX: 5.41 L=10.16
- 227-1221-11 (M22520/5-11) HEX: 5.41
- INNER CONTACT CRIMPING TOOL P/N 413 SP 00 ADJUST TO 5, CABLE BT 3002: 3
- STRIPPING TOOL FOR L910/34 SP 456 00
- CONNECTOR ACCORDING TO NFC 93-570, DIN 47-295, CEI 169-13
- PACKAGING IN BAG WITH COMMERCIAL PART NUMBER AND DATE CODE



CABLE: -BT 2002

NO.	DESCRIPTION	MATERIAL	FINISH	Q'TY	DRAWING NO.
7	NUT	BRASS	NICKEL	1	
6	FERRULE	COPPER	NICKEL	1	
5	FERRULE	COPPER	NICKEL	1	
4	CONTACT PIN	BEUC	GOLD	1	
3	BARREL	BRASS	NICKEL	1	
2	INSULATOR	TEFLON	NATURAL	1	
1	BODY	BRASS	GOLD	1	

DIMENSIONS ARE IN MILLIMETERS			
SCALE	3/1	ISSUE	A

PART NO.	156 931 24E
APPROVED	DATE 10-11-01'
CHECKED	DATE 10-11-01'
DRAWN	DATE 10-11-01'
FILE NO.	

Amphenol

TITLE 1.6/5.6 75Ω BULKHEAD MOUNT JACK

DRAWING NO.

ITEM NO.

F
E
D
C
B
A

F
E
D
C
B
A

1 2 3 4 5 6 7 8