

COMMAND SERIES

Selector and 2 & 3-Position Keylock

A 25-03

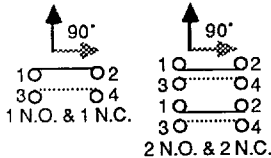
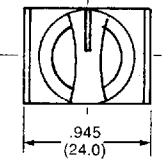
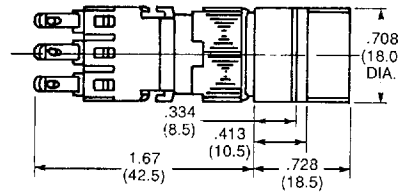
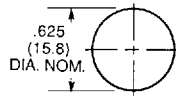
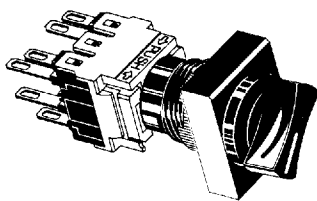
Command Series Selector & Keylock Switches are 2 & 3-position rotary types with snap-acting double break contacts. All models have 90° throw. Contacts are silver-clad and gold-plated to provide reliable operation at logic levels as well as for power switching applications. Contacts are electrically isolated from one another. Keylock types are supplied with two keys. Oiltight models meet NEMA 1, 12 & 13 requirements. PC/Wirewrap terminations also available. Consult factory.

UL U.L. Recognized E-51302

SPECIFICATIONS

- Contact Rating:** 0.4VA @ 20 VDC or Peak AC
..... 5A @ 250VAC or 24VDC (Resistive)
- Initial Contact Resistance:** 20 milliohms maximum
- Insulation Resistance:** 100 megohms minimum
- Dielectric Strength:** 1500 volts RMS at sea level
- Contacts:**..... gold plate over silver clad
- Life Expectancy:** 100,000 operations at rated current
- Operating Temperature:** -20°C to +70°C (-4°F to +158°F)

SELECTORS



NON-OILTIGHT

- 164P2B11
- 164P2B22
- 164P2B33
- 164P0B22
- 164P0B33
- 164P3B22
- 164P3B33

OILTIGHT

- 165P2B11
- 165P2B22
- 165P2B33
- 165P3B22
- 165P3B33

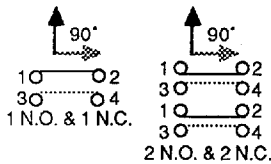
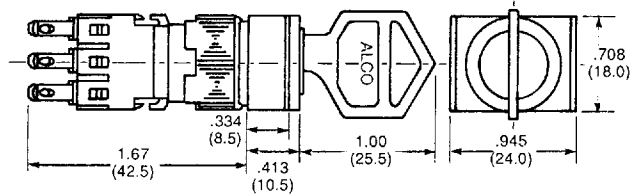
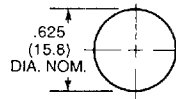
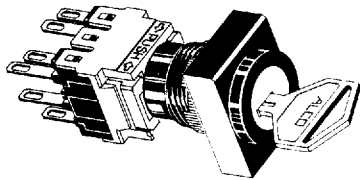
CONTACT

- 1N.O.&N.C.
- 2N.O.&N.C.
- 3N.O.&N.C.
- 2N.O.&N.C.
- 3N.O.&N.C.
- 2N.O.&N.C.
- 3N.O.&N.C.

ACTION

- 2 POS. MAINTAINED
- 2 POS. MAINTAINED
- 2 POS. MAINTAINED
- 2 POS. MOMENTARY RIGHT
- 2 POS. MOMENTARY RIGHT
- 3 POS. CENTER OFF
- 3 POS. CENTER OFF

KEYLOCKS



2 POSITION KEYLOCKS

NON-OILTIGHT	OILTIGHT	CONTACT	ACTION
164J2A11	165J2A11	1N.O.&N.C.	Maintained, key pull left
164J2A22	165J2A22	2N.O.&N.C.	Maintained, key pull left
164J2A33	165J2A33	3N.O.&N.C.	Maintained, key pull left
164J2B11	165J2B11	1N.O.&N.C.	Maintained, key pull both
164J2B22	165J2B22	2N.O.&N.C.	Maintained, key pull both
164J2B33	165J2B33	3N.O.&N.C.	Maintained, key pull both
164J0A11		1N.O.&N.C.	Momentary right, key pull left
164J0A22		2N.O.&N.C.	Momentary right, key pull left
164J0A33		3N.O.&N.C.	Momentary right, key pull left

3 POSITION KEYLOCKS

NON-OILTIGHT	OILTIGHT	CONTACT	ACTION
164J3A22	165J3A22	2N.O.&N.C.	Maintained, key pull left
164J3A33	165J3A33	3N.O.&N.C.	Maintained, key pull left
164J3E22	165J3E22	2N.O.&N.C.	Maintained, key pull center
164J3E33	165J3E33	3N.O.&N.C.	Maintained, key pull center
164J3C22	165J3C22	2N.O.&N.C.	Maintained, key pull all
164J3C33	165J3C33	3N.O.&N.C.	Maintained, key pull all
164J7A22	165J7A22	2N.O.7N.C.	Momentary right, key pull left

SPECIFICATIONS SUBJECT TO CHANGE WITHOUT NOTICE.



Alcoswitch®

1551 Osgood Street

N. Andover, MA 01845 USA

Tel: (508)685-4371

FAX: (508)686-9545

TLX: 275423

D35