

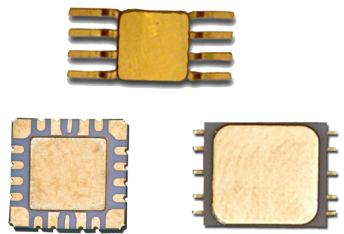
# ACLM-4748F

## Surface Mount Limiter



### Features:

- Limits input power levels of 10W CW
- Operating temperature range of -55 ° C to +85 ° C
- Offered in drop in and surface mount packages
- Coaxial configurations available upon request
- RoHS Compliant



### Specifications:

Parameter	Specification	Units
Frequency Range (min)	0.020 – 6.0	GHz
Peak Input Power (max)	1000	W
CW Input Power (max)	10	W
CW Flat Leakage (max)	12.5	dBm
Insertion Loss (max)	1.0	dB
VSWR (max)	1.4:1	ratio

### Notes:

Typically CW leakage is measured at mid-band with 1W input.

Power handling is rated from -55°C to +85°C.

### Features:

- Low Insertion Loss
- Low Leakage Power Circuit Protection
- High CW Power Handling
- Hermetically Sealed Modules

### Environmental Specifications:

Designed to meet:

MIL-E-5400, MIL-STD-202, MIL-E-16400  
 Operating Temp: -55 °C to +85 °C  
 Storage Temp: -65 °C to +125 °C  
 Shock: MIL-STD-202F, M213, Cond B  
 Altitude: MIL-STD-202F, M105, Cond B  
 Vibration: MIL-STD-202F, M204, Cond B  
 Thermal Shock: MIL-STD-202F, M107, Cond A  
 Temperature Cycle: MIL-STD-202F, M105C, Cond D

### Standard Screening:

Internal Visual per MIL-STD-883, Method 2017  
 Temperature Cycle: -65°C to +100°C, 10 cycles

### OPTIONAL HIGH-REL SCREENING

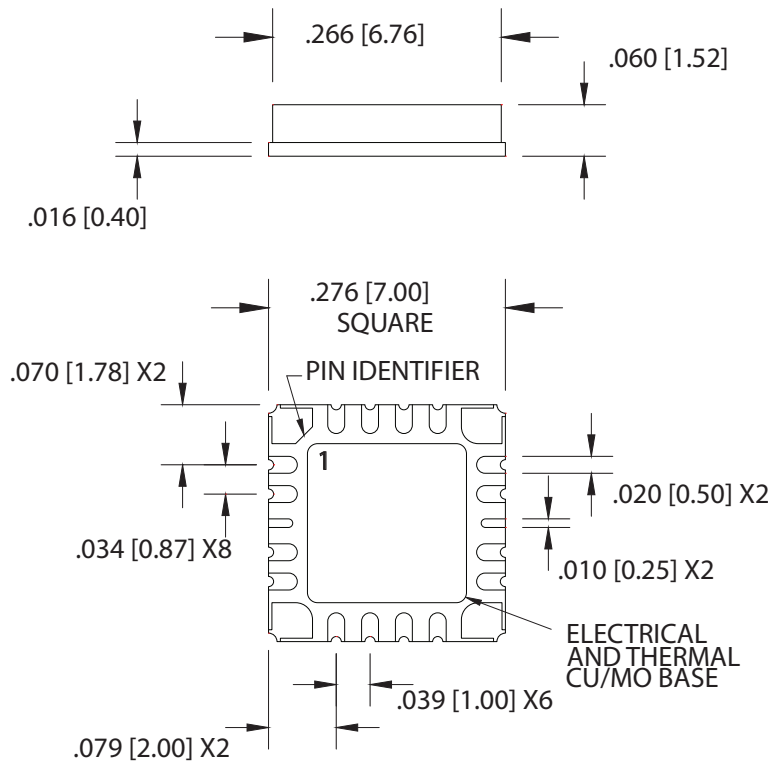
#### (Ref MIL-PRF-38534):

Stabilization Bake per MIL-STD-883, Method 1008  
 Temperature Cycle per MIL-STD-883, Method 1010  
 Constant Acceleration per MIL-STD-883, Method 2001  
 Burn-in per MIL-STD-883, Method 1015  
 External Visual per MIL-STD-883, Method



611 Industrial Way, Eatontown , NJ 07724 [USA]  
 Phone: (732) 460-0212, Fax: (732) 460-0214  
 www.aeroflex.com/acc, email: acc-sales@aeroflex.com

**Outline Drawing:**



PINOUT MATRIX	
PIN	FUNCTION
1	N/C
2	GND
3	RF INPUT
4	GND
5	N/C
6	N/C
7	N/C
8	N/C
9	N/C
10	N/C
11	GND
12	OUTPUT
13	GND
14	N/C
15	N/C
16	N/C

NOTE: FOR BEST ELECTRICAL PERFORMANCE BASE AND CORNER TAB MUST BE GROUNDED

ATTENTION:  
THIS IS A TOP VIEW (AS MOUNTED)  
(TYPICAL WEIGHT = 0.27g)

STANDARD CASE STYLE M17  
(OPTIONAL CASE STYLES M16, M22)

**Part Number Ordering Information:**

- Add desired case style suffix: "M16" (Ex: ACLM-4812FM16)

**Aeroflex Control Components**  
Aeroflex Microelectronic Solutions  
611 Industrial Way  
Eatontown, NJ 07724 [USA]  
Fax: (732) 460-0214

Sales  
Phone: (732) 460-0212  
ACC-sales@aeroflex.com

[www.aeroflex.com/Microwave](http://www.aeroflex.com/Microwave) [www.aeroflex.com/ACC](http://www.aeroflex.com/ACC)

Aeroflex Control Components reserves the right to make changes to any products and services herein at any time without notice. Consult Aeroflex or an authorized sales representative to verify that the information in this data sheet is current before using this product. Aeroflex does not assume any responsibility or liability arising out of the application or use of any product or service described herein, except as expressly agreed to in writing by Aeroflex; nor does the purchase, lease, or use of a product or service from Aeroflex convey a license under any patent rights, copyrights, trademark rights, or any other of the intellectual rights of Aeroflex or of third parties.

Copyright 2011 Aeroflex Control Components. All rights reserved.

ISO 9001:2008 certified



Our passion for performance is defined by three attributes represented by these three icons: solution-minded, performance-driven and customer-focused.