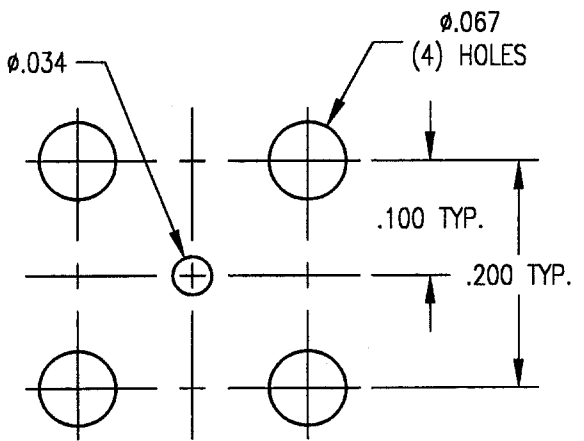
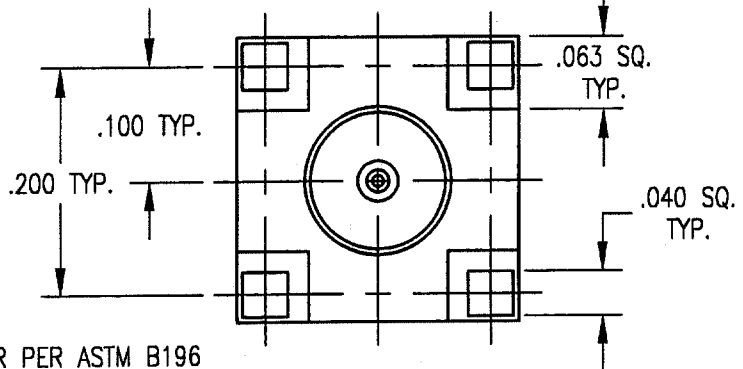
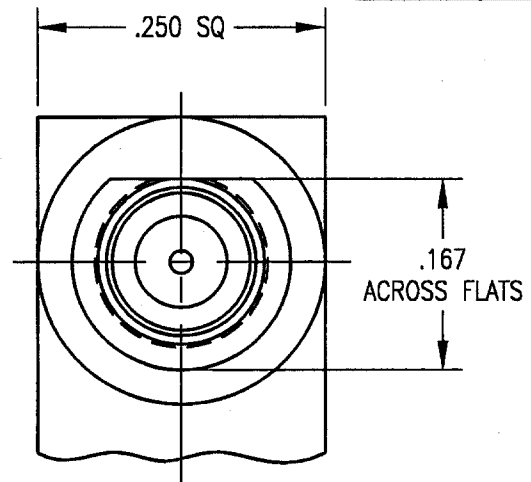
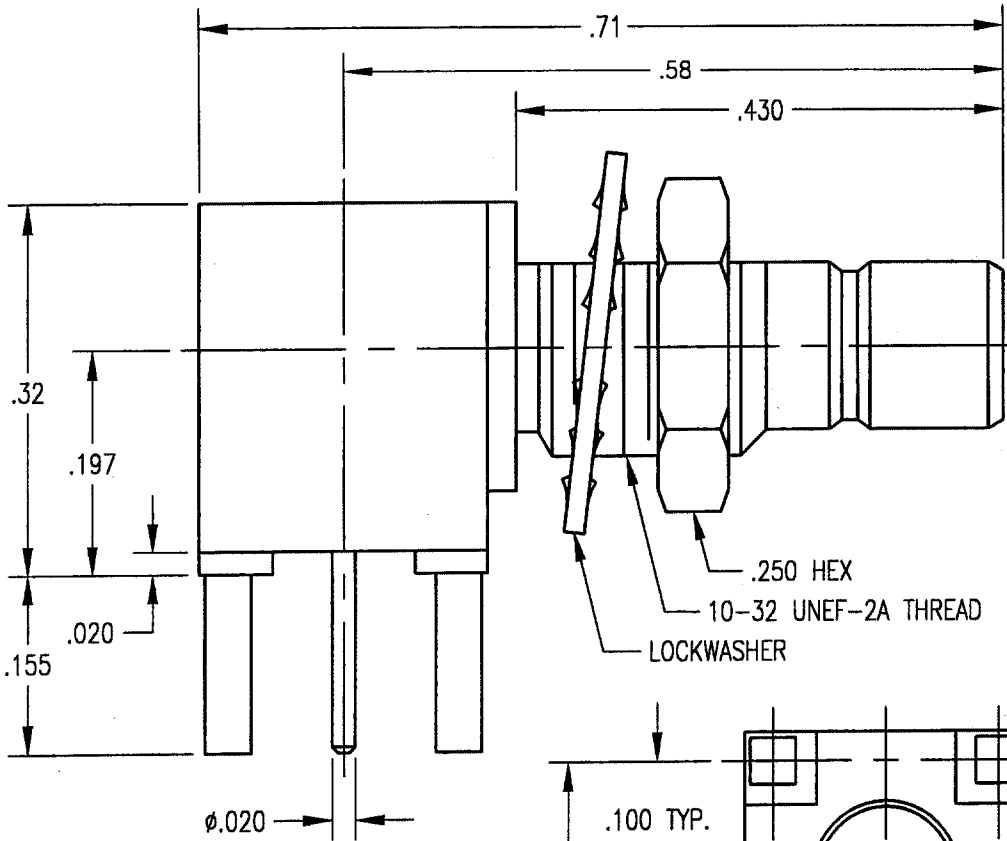


DWG. NO. 573-080-6041H		
REV	DESCRIPTION	BY DATE APPD
A	RELEASED PER NPR 1620	66/12/21 GJT



NOTES:

- MATERIALS:
 CENTER CONTACT: BERYLLIUM COPPER PER ASTM B196
 LOCKWASHER: PHOSPHOR BRONZE PER ASTM B103
 INSULATOR: TEFLON PER ASTM D1710
 ALL OTHER METAL PARTS: BRASS PER ASTM B16
- FINISH:
 BODY: .000015 MIN. GOLD PER MIL-G-45204 OVER
 .000050 MIN. NICKEL PER QQ-N-290
 CENTER CONTACT: .000030 MIN. GOLD PER MIL-G-45204 OVER
 .000050 MIN. NICKEL PER QQ-N-290
 NUT & LOCKWASHER: .000005 MIN. GOLD PER MIL-G-45204 OVER
 .000050 MIN. NICKEL PER QQ-N-290
- IMPEDANCE: 75 OHMS NOMINAL

END VIEW

MOUNTING HOLE LAYOUT

PER ASME Y14.5M-1994 UNLESS OTHERWISE SPECIFIED: DIMENSIONS ARE IN INCHES OR INCHES/MIL TOLERANCES: .XX ± .01/0.254 .XXX ± .005/0.127 ANGLES ± 2° SCALE: 6:1				Litton Winchester Electronics/RETCONN <small>400 Park Road Waterbury, Connecticut 06795</small>	
CUSTOMER DRAWING				TITLE 75 OHM MINI-SMB BULKHEAD PC MOUNT JACK	
DRAWN JED DATE 11/29/99	CHECKED JC DATE 11/30/99	APPROVED JMC DATE 11/30/99	APPROVED KJT DATE 11/30/99	A 573-080-6041H	SHT. 1 OF 1 REV. A