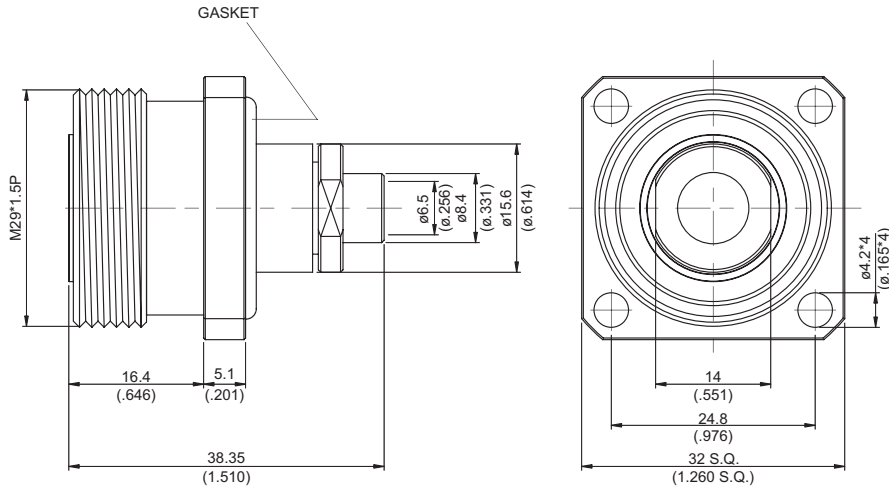
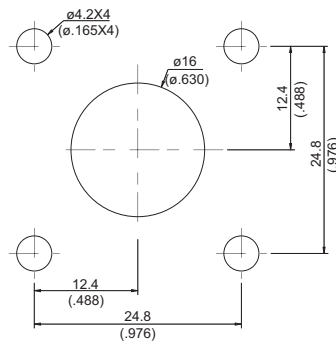


7/16-8346-0250

7/16 Jack Solder For Panel Receptacle 50Ω



MOUNTING HOLE:



Parts	Material	Plating(Micro-inch)
Contact Body	Brass	Tin-Zinc-Copper-Alloy 100 Over Copper 50
Gasket	Silicon	
Nut	Brass	Tin-Zinc-Copper-Alloy 100 Over Copper 50
Contact Pin	Phosphor Bronze	Silver 150 Over Copper 50
Insulator	Teflon	
Solder Ferrule	Brass	Gold 5 Over Nickel 50 Over Copper 50
Body	Brass	Tin-Zinc-Copper-Alloy 100 Over Copper 50

Weight: 98.02 g

Suitable Cables: Semi-rigid.250

This part number complies with RoHS.

Notice: JYEBAO reserves the right to make modifications deemed appropriate.

## CABLE ASSEMBLY INSTRUCTION

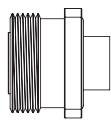
7/16-8346-0250

JYE BAO CO., LTD.

A

B

C



BODY + GASKET

FERRULE

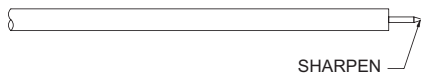
NUT

DIAGRAM

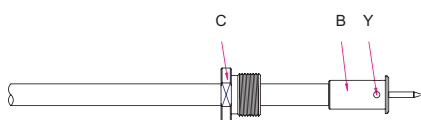
ASSEMBLY INSTRUCTION



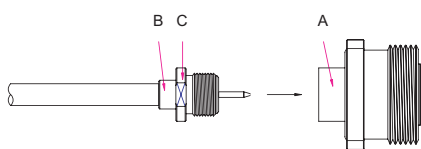
Step 1: STRIP AS SHOWN .



Step 2: SHARPEN CENTER CONDUCTOR TIP.



Step 3: SLIDE NUT " C " OVER CABLE .  
 Step 4: PUT FERRULE " B " ON CENTER CONDUCTOR AND SOLDER IN " Y " .  
 Step 5: STRIP EXCESS TEFLON AFTER SOLDERING .



Step 6: FINALLY SCREW " C " ON THE CONNECTOR BODY " A " .

This part number complies with RoHS.

Notice: JYEBAO reserves the right to make modifications deemed appropriate.