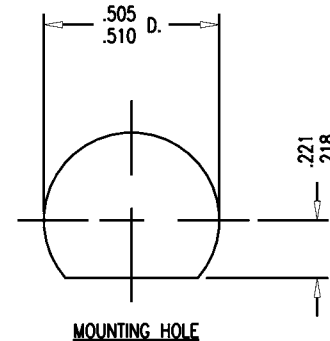
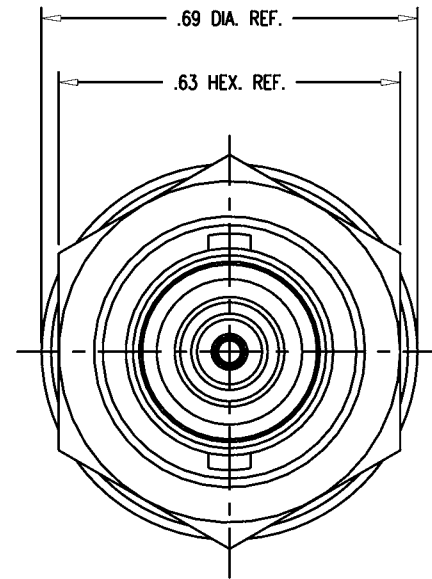
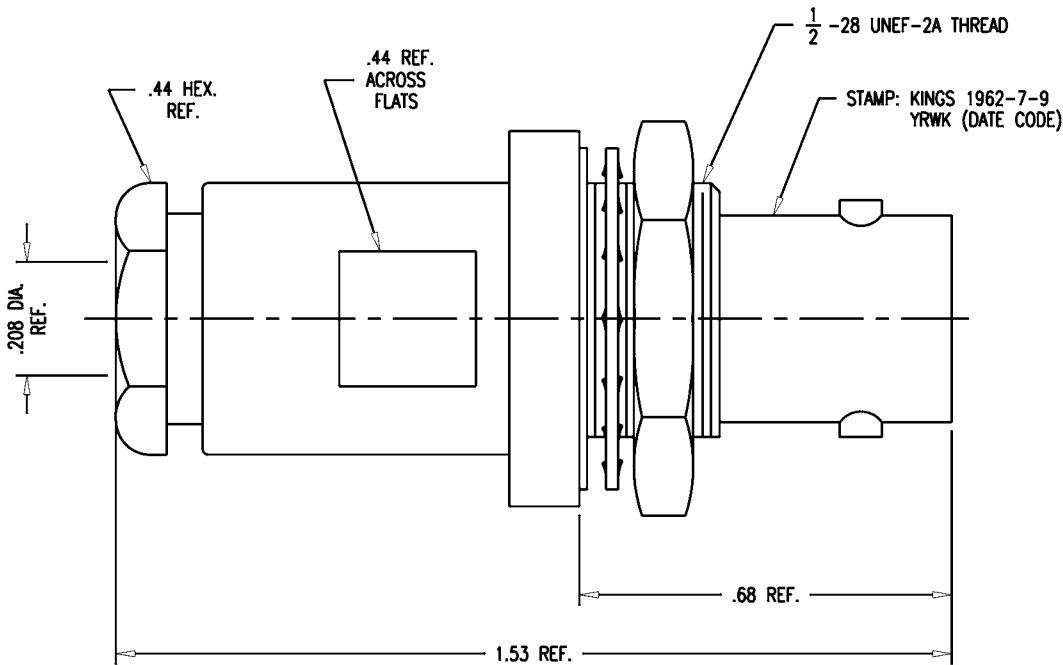


# GSD

1962-7-9



MOUNTING HOLE

# GSD

**NOTES:**

1. FOR USE WITH RAYCHEM 7524D5011 & ITT BA6416A CABLE.
2. FOR CABLING INSTRUCTIONS SEE CP-1301.
3. INTERFACE PER MIL-STD-348, FIG. 201-2 (AS APPLICABLE).
4. MAXIMUM PANEL THICKNESS: .116 INCHES
5. MATERIALS:  
 INSULATORS: TEFLON, ASTM-D-4894  
 GASKETS: SILICONE RUBBER, A-A-59588  
 CENTER CONTACT: BER. COP., ASTM-B-196  
 INTERMEDIATE CONTACT: BER. COP., ASTM-B-196  
 LOCKWASHER: PHOSPHOR BRONZE, ASTM-B-103  
 ALL OTHER PARTS: BRASS, ASTM-B16
6. FINISHES:  
 INT. CONTACT & CENTER CONTACTS: GOLD PLATE PER ASTM-B-488  
 ALL OTHER METAL PARTS: KINGS TARNISH RESISTANT FINISH (TR-5).
7. ELECTRICAL CHARACTERISTICS:  
 VOLTAGE RATING: 400 VRMS  
 FREQUENCY RANGE: DC TO 500 MHz
8. WEIGHT: 0.052 POUNDS

**REVISIONS**

ISSUE	CHANGES
0	ER 39322 TML 09/06/05

SCALE 4:1

APPROX SURFACE AREA

EQR 974

USED ON

REF: BOEING

JK, BKHD, TRB

DRAWN TML	DATE 08/30/05
DESIGN TML	DATE 08/30/05
APPR.	DATE

**KINGS**  
 ELECTRONICS CO., INC.  
 ROCK HILL, SOUTH CAROLINA 29730

1962-7-9