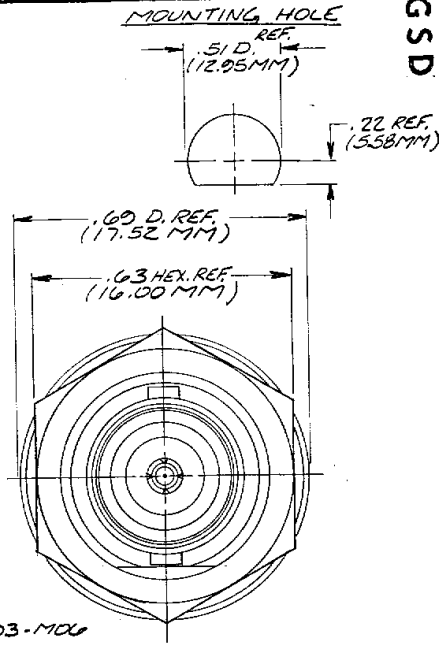
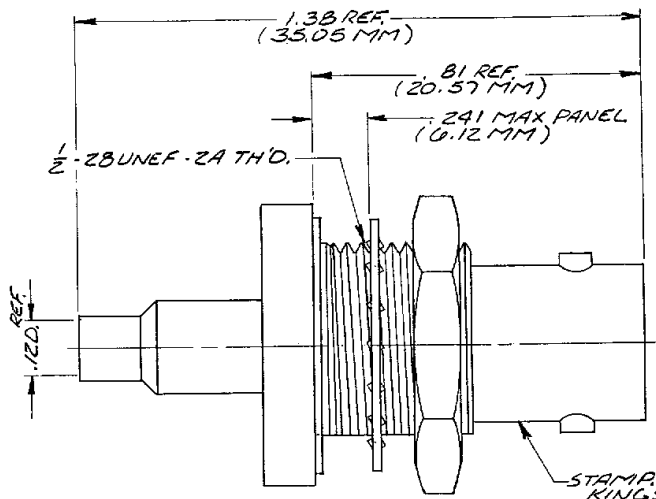


DASH NO. M CODE MADE FROM



STAMP: KINGS KC-19-293-M06

NOTES:  
1. FOR CONNECTOR SPECIFICATIONS, SEE SHEET 2.

- UNLESS OTHERWISE SPECIFIED:
1. TOLERANCES: FRACTIONS & 2 PLACE DECIMALS = .010  
3 PLACE DECIMALS = .004
  2. REMOVE ALL BURRS, BREAK SHARP EDGES .005 MAX.
  3. NO FILLETS PERMITTED.
  4. SURFACE ROUGHNESS 63 MICRONS RMS MAX.
  5. ALL DIMENSIONS PRIOR TO PLATING.
  6. ALL PLATING IN ACCORDANCE WITH KER 10004.
- T. I. R. CONCENTRICITY OF ANY 2 DIAMETERS MAY NOT EXCEED HALF THE SUM OF THEIR TOLERANCES.

GSD

KC-19-293-M06 (SHT 1 OF 2)

REVISIONS	
ISSUE	CHANGES
0	ER 17700 MJB 14 NOV 77
1.	CN 24734 A MCD 21 JUN 83
2	CN 24977 A LI 6 AUG 83
3	CN 29009 E JCA 6 APR 88

**GSD**

SCALE: 4:1

APPROX. SURFACE AREA:  
WAS E-7367

USED ON:

REF:

BNC BULKHEAD JACK

DRAWN: M.D. DATE: 12 MAR 82  
APPR: MJB DATE: 18 MAR 82

**KINGS**  
ELECTRONICS CO., INC.  
TUCUMPHOE, NEW YORK 12157

**GSD** KC-19-293-M06 (SHT 1 OF 2)

DASH NO	M CODE	MADE FROM
---------	--------	-----------

NOTES:

1. FOR USE WITH RG-179 & 187 CABLE.
2. FOR CABLING INSTRUCTIONS SEE CP-5417.
3. FOR CABLE TRIMMING USE KTJ-175 & KTJ-219.
4. FOR CRIMPING USE DIE SIZE 140.
5. MATERIALS: CENTER CONTACT- BERYLLIUM COPPER, QQ-C-530.  
 K-GRIP SLEEVE- COMMERCIAL BRONZE, ALLOY 220.  
 LOCKWASHER- PHOSPHOR BRONZE, QQ-B-750.  
 ALL OTHER METAL PARTS- BRASS, QQ-B-626.  
 GASKET- SILICONE RUBBER, ZZ-R-765.  
 INSULATORS- TEFLON, L-P-403.
6. FINISH: CENTER CONTACT- SILVER PLATE PER QQ-S-365.  
 ALL OTHER METAL PARTS- KINGS TARNISH RESISTANT FINISH (TR-5).
7. ELECTRICAL CHARACTERISTICS: NOMINAL IMPEDANCE-50 OHMS.  
 FREQUENCY RANGE- DC TO 4GH<sub>Z</sub>.  
 WORKING VOLTAGE- 500 VOLTS RMS.  
 CONTACT RESISTANCE: OUTER CONTACT-.2 MILLIOHMS  
 CENTER CONTACT-2.1 MILLIOHMS  
 INSULATION RESISTANCE: 5000 MEGOHMS MINIMUM  
 DIELECTRIC WITHSTANDING VOLTAGE: 1500 VOLTS, RMS @ SEA LEVEL  
 R.F. LEAKAGE: -55 db MAX. @ 2 TO 3 GH<sub>Z</sub>  
 R.F. INSERTION LOSS: 0.2 db MAX. @ 3 GH<sub>Z</sub>
8. MECHANICAL CHARACTERISTICS:  
 COUPLING NUT RETENTION: 100 LBS. MINIMUM  
 CABLE RETENTION: 60 LBS. MINIMUM, RG-58C/U CABLE  
 DURABILITY: 500 CYCLES PER MIL-C-39012

9. ENVIRONMENTAL CHARACTERISTICS:

- TEMPERATURE RANGE: -65° C TO +165° C  
 (TEFLON CABLES)
- VIBRATION: MIL-STD-202, METHOD 204,  
 TEST COND. B
- SHOCK: MIL-STD-202, METHOD 202, 50 G
- MOISTURE RESISTANCE: MIL-STD-202, METHOD 106
- SALT SPRAY: MIL-STD-202, METHOD 101, TEST COND. B
- TEMPERATURE CYCLING: MIL-STD-202, METHOD 102,  
 TEST COND. C

UNLESS OTHERWISE SPECIFIED:  
 \* TOLERANCES: FRACTIONS & 2 PLACE DECIMALS ± .010  
 3 PLACE DECIMALS ± .004 ANGLES ± 0°30'  
 † 1 R. CONCENTRICITY OF ANY 2 DIAMETERS MAY  
 NOT EXCEED HALF THE SUM OF THEIR TOLERANCES

2. REMOVE ALL BURRS, BREAK SHARP EDGES .005 MAX
3. NO FILLETS PERMITTED
4. SURFACE ROUGHNESS 63 MICROINCHES RMS MAX.
5. ALL DIMENSIONS PRIOR TO PLATING
6. ALL PLATING IN ACCORDANCE WITH KER 10004.


GSD

KC-19-293-M06  
(SHEET 2 OF 2)

REVISIONS

ISSUE	CHANGES
2	CN 24977 A LI 6 AUG 83
3	CN 29669 E JCA 6 APR 88

GSD

SCALE	
APPROX SURFACE AREA	
WAS: E-7367	
USED ON	
REF	
BNC BULKHEAD JACK	
DRAWN AMD	DATE 24MAR88
APPR MJB	DATE 7 APR 88
APPR	DATE
 KINGS ELECTRONICS CO. INC. 100 WOODLAND BLVD WILSON, N.C. 27157	
KC-19-293-M06 (SHEET 2 OF 2)	

GSD