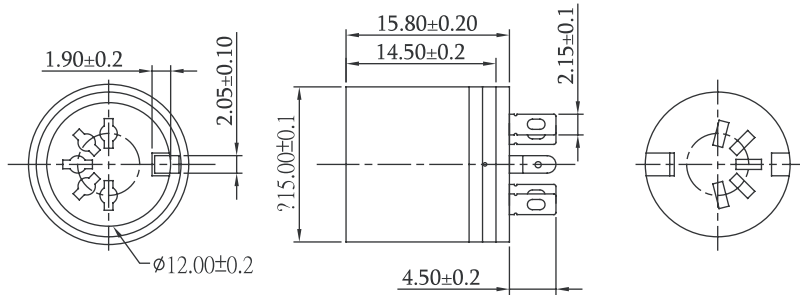




DIN JACK MOLDED TYPE 3~8PIN

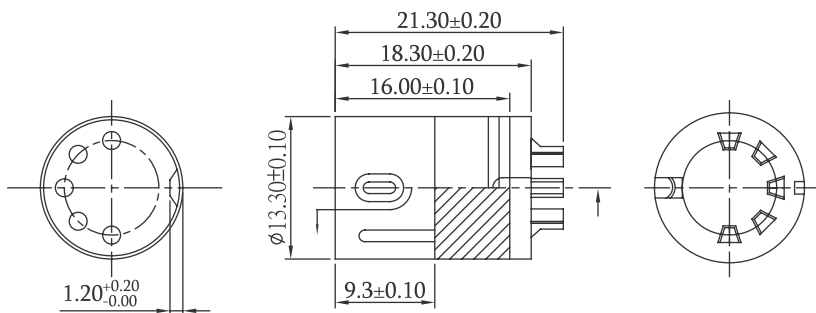


Part No.: **DINM-F** **SB-L**
3~8 PORTS

NO.OF CONTACT	3(180°)	4(210°)	5(180°)	6(240°)	7(270°)	8(270°)
POSITION						

No.	Name	Qty	Material	Remarks & Thickness	Finish
1	Shell	1	Copper Alloy	T=0.40mm	Nickel Plated
2	Contact	3-8	Copper Alloy	T=0.60mm	Selective
3	Housing	1	P.B.T	UL 94-V0	Black/Ivory/Gray
4	Grounding Strip	1	Stainless Steel	T=0.20mm	Tin Plated

DIN PLUG MOLDED TYPE 3~8PIN



Part No.: **DINM-M** **SB-L**
3~8 PORTS

NO.OF CONTACT	3(180°)	4(210°)	5(180°)	6(240°)	7(270°)	8(270°)
POSITION						

No.	Name	Qty	Material	Remarks & Thickness	Finish
1	Contact	3-8	Copper Alloy	T=0.20mm	Selective
2	Housing	1	P.B.T	UL 94-V0	Black
3	Shell	1	Copper Alloy	T=0.40mm	Nickel Plated