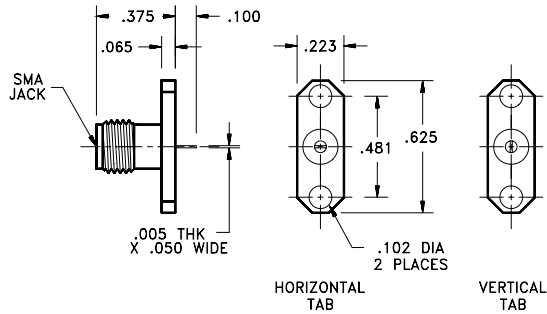


Straight Panel Mount Female Jack Receptacle - Two Hole

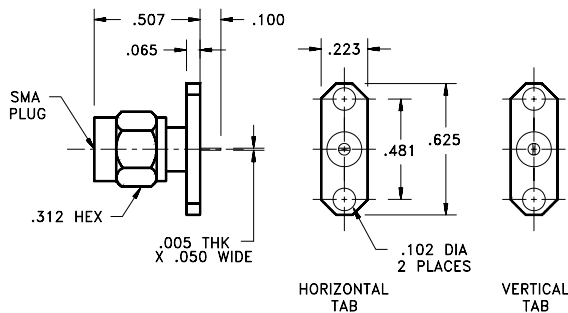
Model Number	Tab Position
SMA-5230-15-TAB-02	Horizontal
SMA-5232-15-TAB-02	Vertical



Note: Standard finish is passivated stainless steel, for gold plating change -02 suffix to -00.

Straight Panel Mount Male Plug Receptacle - Two Hole

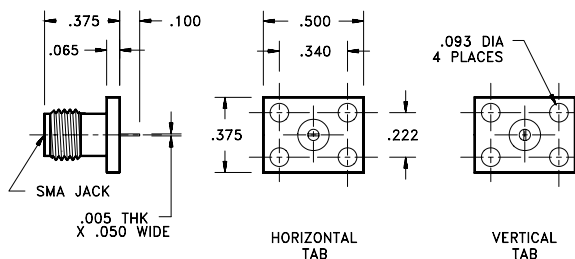
Model Number	Tab Position
SMA-5230-14-TAB-02	Horizontal
SMA-5232-14-TAB-02	Vertical



Note: Standard finish is passivated stainless steel, for gold plating change -02 suffix to -00.

Straight Panel Mount Female Jack Receptacle - Rectangular Flange

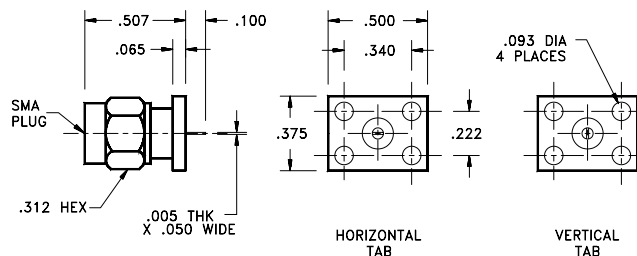
Model Number	Tab Position
SMA-5430-15-TAB-02	Horizontal
SMA-5432-15-TAB-02	Vertical



Note: Standard finish is passivated stainless steel, for gold plating change -02 suffix to -00.

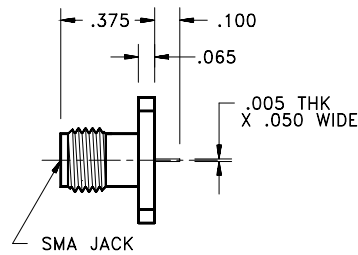
Straight Panel Mount Male Plug Receptacle - Rectangular Flange

Model Number	Tab Position
SMA-5430-14-TAB-02	Horizontal
SMA-5432-14-TAB-02	Vertical



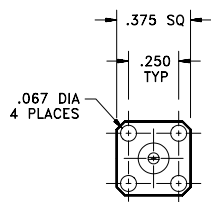
Note: Standard finish is passivated stainless steel, for gold plating change -02 suffix to -00. See Appendix for detail interface dimension information.

Straight Flange Mount Female Jack Receptacle - 4 Hole

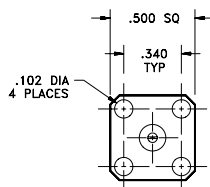


* For non-captive center contact, change fourth digit of Model No. from "5" to "6". Example: SMA-6330-15-TAB-02.

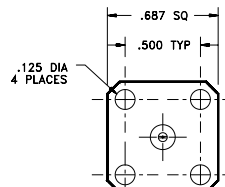
Captured Center Contact*			
Model Number	Flange Size Square Inches (mm)	Model Number	Flange Size Square Inches (mm)
SMA-5330-15-TAB-02	.375 (9.5)	SMA-5630-15-TAB-02	.687 (17.5)
SMA-5530-15-TAB-02	.500 (12.7)	SMA-5130-15-TAB-02	1.000 (25.4)



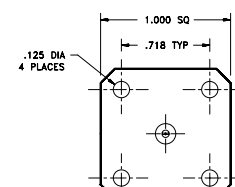
.375 Square



.500 Square

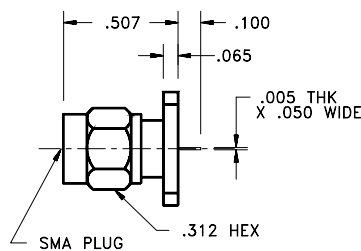


.687 Square



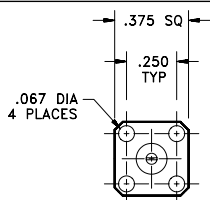
1.000 Square

Straight Flange Mount Male Plug Receptacle - 4 Hole

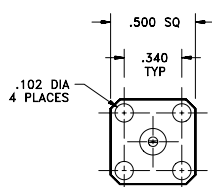


* For non-captive center contact, change fourth digit of Model No. from "5" to "6". Example: SMA-6330-14-TAB-02.

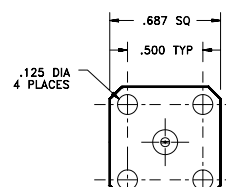
Captured Center Contact *			
Model Number	Flange Size Square Inches (mm)	Model Number	Flange Size Square Inches (mm)
SMA-5330-14-TAB-02	.375 (9.5)	SMA-5630-14-TAB-02	.687 (17.5)
SMA-5530-14-TAB-02	.500 (12.7)	SMA-5130-14-TAB-02	1.000 (25.4)



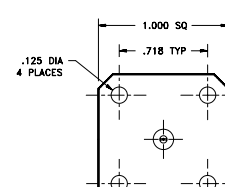
.375 Square



.500 Square



.687 Square



1.000 Square