

NEW PRODUCT PCP4/5 series :FP series(2)

High performance composite type devices suitable for surface mounting which make the sets smaller and lighter.

note:Marking is the figures of Type No.

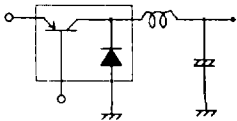
※:When mounted on ceramic board(2.5 0 mm² × 0.8 mm) (1 unit)

DC-DC convertors (TR+SBD)

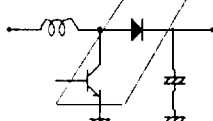
For PNP, (-) sign is omitted.

Type No.	Pack- age	Absolute Maximum Ratings /Ta=25°C					Electrical Characteristics/Ta=25°C										Related Type No. (Chips used)
		(Transistor)			(Diode)		(Transistor)					(Diode)					
		V _{CEO} (V)	I _C (A)	P _C * (W)	V _{RRM} (V)	I _O (A)	V _{CE} /I _C (V/mA)	h _{FE}	I _C /I _B (A/mA)	V _{CE(sat)} typ (V)	I _F (mA)	V _F max (V)	V _R (V)	I _R max (μA)	I _F (mA)	t _{rr} max (nS)	
FP101 FP102 FP103 FP104 FP105 FP106 FP108	PCP4	25	2	1.3	50	0.5	2/100	140-560	1.5/75	0.35/0.6	500	0.55	25	50	10		
11		3	30		0.7	2/500	140-560	1.5/30	0.22/0.4	700	15		80				
25		2	30		0.7	2/100	140-560	1.5/75	0.35/0.6	700	15		80				
40		1.5	50		0.5	2/100	100-280	0.8/40	0.3/0.8	500	25		50				
50		2	50		0.5	2/100	140-560	1/50	0.3/0.7	500	25		50				
15		3	15		1	2/500	100-280	1.5/75	0.25/0.5	1A	7.5		50				
25		2	15		1	2/100	140-400	1.5/75	0.35/0.6	1A	7.5		50				
FP301 FP302 FP303 FP304	PCP5	25	2	0.8	30	0.7	2/100	140-560	1.5/75	0.18/0.4	700	0.55	15	80	10		
45		1.5	50		0.5	2/100	100-400	0.8/40	0.25/0.7	500	25		50				
50		2	50		0.5	2/100	140-560	1/50	0.15/0.4	500	25		50				
10		3	30		0.7	2/500	160-560	3/60	0.3/0.4	700	15		80				

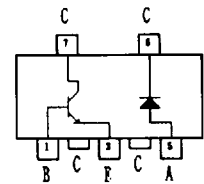
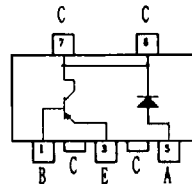
Application circuits(DC-DC converter)
FP101-FP108(1 pack)



FP301-FP304



Electrical connection(top view)
FP101-FP106, FP108.



High-speed switching application

For PNP, (-) sign is omitted.

Type No.	Pack- age	Absolute Maximum Ratings /Ta=25°C					Electrical Characteristics/Ta=25°C										Related Type No. (Chips used)
		MOSFET			SBD		MOSFET					SBD					
		V _{DSS} (V)	I _D (A)	P _D * (W)	V _{RRM} (V)	I _O (A)	V _{CE} /I _C (V/mA)	V _{GS(off)}	R _{DS(on)} (Ω)	V _{GS=4.5V} typ/max	V _{GS=10V} typ/max	I _F (mA)	V _F max (V)	V _R (V)	I _R max (μA)	I _F (mA)	
FP501	PCP4	30	0.5	3.5	30	0.5	10/1	1-2.5	0.8/1.5	0.4/0.55	500	0.55	15	30	100	10	NchMOSFET+SB05-03

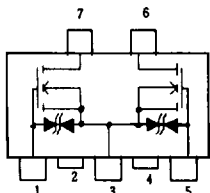
Low On-resistance Power MOSFETs Complex type

For PNP, (-) sign is omitted.

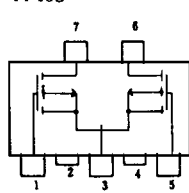
Type No.	Pack- age	Absolute Maximum Ratings /Ta=25°C				Electrical Characteristics/Ta=25°C								Related type No. Chips used
		V _{DSS} (V)	V _{GSS} (V)	I _D (A)	P _D T _c =25°C (W)	V _{DS} (V)	I _D (mA)	I _{ys} typ (mS)	R _{DS(on)} (Ω)		c _{iss} typ (pF)	c _{rss} typ (pF)		
									V _{GS=4V} typ/max	V _{GS=10V} typ/max				
FP401	PCP5	250	±20	0.4	2	10	200	400	-	8/12	37	4	2SK2167X2	
FP402		20	±15	1	2	10	500	1000	0.55/0.75	0.35/0.48	50	15	2SK2151X2	
FP403		20	±15	0.5	2	10	250	300	1.8/3.5	1/1.4	48	14	PchMOSFETX2	

Electrical connection (Top view)

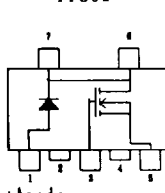
FP401-FP402



FP403



FP501



1, 5: Gate
2, 4, 6, 7: Drain
3, Source

1: Anode
2, 7: Cathode
3: Gate
4, 6: Drain
5: Source

These specifications are subject to change without notice.