

Customer Information Sheet

DRAWING No.: S505-XX / S506-XX

SHEET 3 OF 4

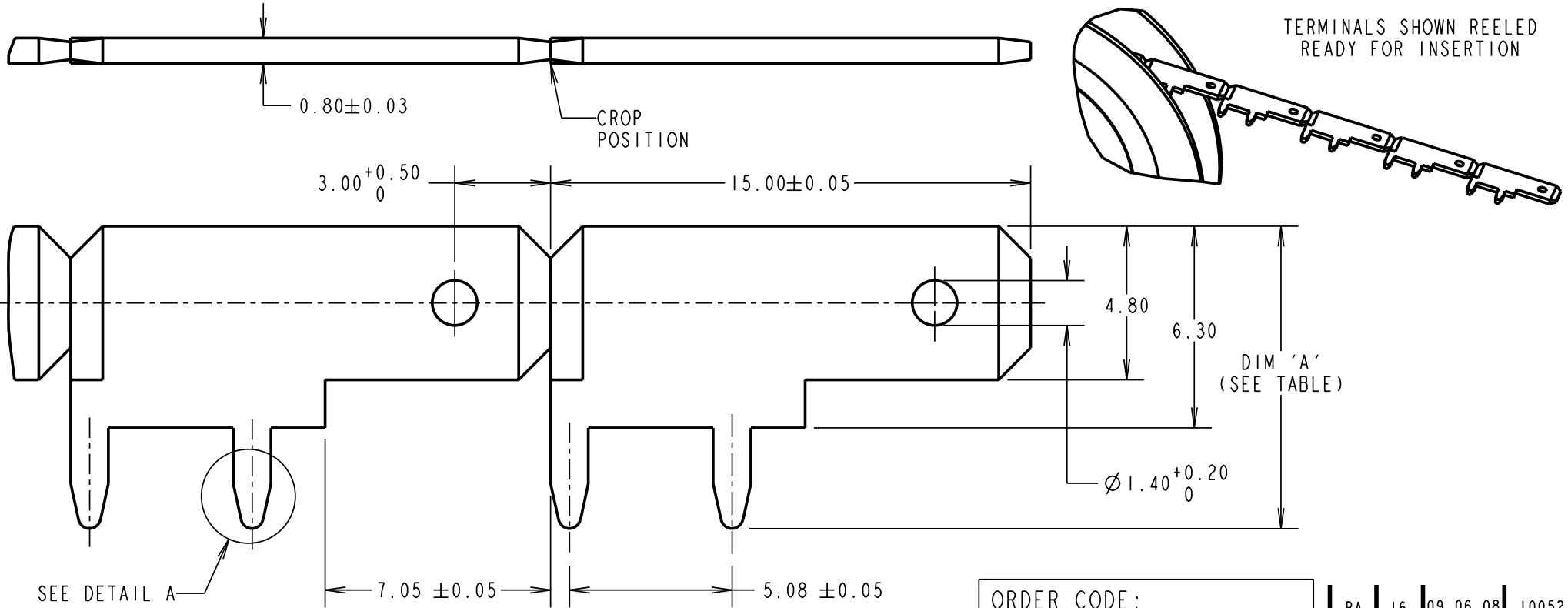
IF IN DOUBT - ASK

©

NOT TO SCALE

THIRD ANGLE PROJECTION

ALL DIMENSIONS IN mm



SEE DETAIL A

PART No.	DIM 'A'	PCB THICKNESS
S505-XX	9.15-9.45	1.60
S506-XX	9.95-10.25	2.40

ORDER CODE: **S5XX-XX**

TYPE: 05 OR 06
(SEE TABLE)

FINISH _____

00 - UNPLATED
06 - 4µ 90/10 TIN/LEAD
46 - 4µ 100% TIN

RA	16	09.06.08	10052
NAME	ISS.	DATE	C/NOTE
APPROVED:		R. ADDE	
CHECKED:		M.G. PLESTED	
DRAWN:		I. SANDY	
CUSTOMER REF.:			
ASSEMBLY DRG:			

NOTES:

- QUANTITY PER REEL = 10K.
REEL WEIGHT = 5.9kg (INCLUDING REEL).
- RECOMMENDED MOUNTING HOLE SIZE = $\varnothing 1.25 \pm 0.06$ mm.

HARWIN

HARWIN USA TEL: 603 893 5376 FAX: 603 893 5396 mis@harwin.com	HARWIN Europe (UK) TEL: 023 9231 4545 FAX: 023 9231 4590 mis@harwin.co.uk	HARWIN Asia TEL: +65 6 779 4909 FAX: +65 6 779 3868 mis@harwin.com.sg
------------------------------------------------------------------------	------------------------------------------------------------------------------------	--------------------------------------------------------------------------------

THIS DRAWING AND ANY INFORMATION OR DESCRIPTIVE MATTER SET OUT HEREON ARE CONFIDENTIAL AND COPYRIGHT PROPERTY OF THE HARWIN GROUP AND MUST NOT BE DISCLOSED, LOANED, COPIED OR USED FOR MANUFACTURING, TENDERING OR FOR ANY OTHER PURPOSE WITHOUT THEIR WRITTEN PERMISSION.

TOLERANCES
X. = ±1mm
X.X = ±0.25mm
X.XX = ±0.10mm
X.XXX = ±0.01mm
ANGLES = ±5°
UNLESS STATED

MATERIAL:
BRASS CW508L HARD TO
BS EN 1652
(CuZn37 HARD)

FINISH: SEE ORDER CODE

S/AREA: mm²

TITLE:
4.8mm BLADE HORIZONTAL
REELED TAB TERMINAL

DRAWING NUMBER:
S505-XX / S506-XX

SHT
3
OF
4

Customer Information Sheet

DRAWING No.: S505-XX / S506-XX

SHEET 4 OF 4

IF IN DOUBT - ASK

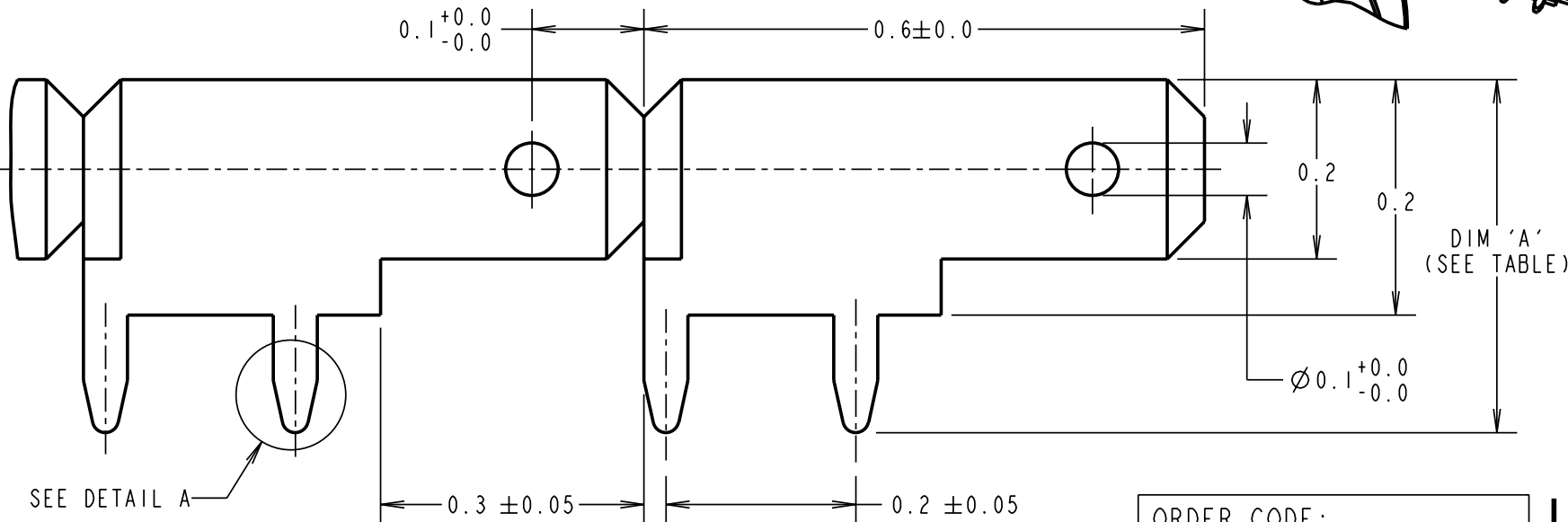
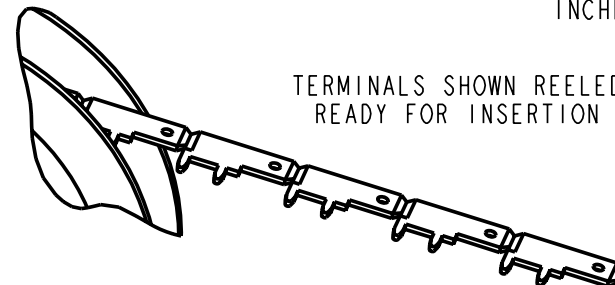
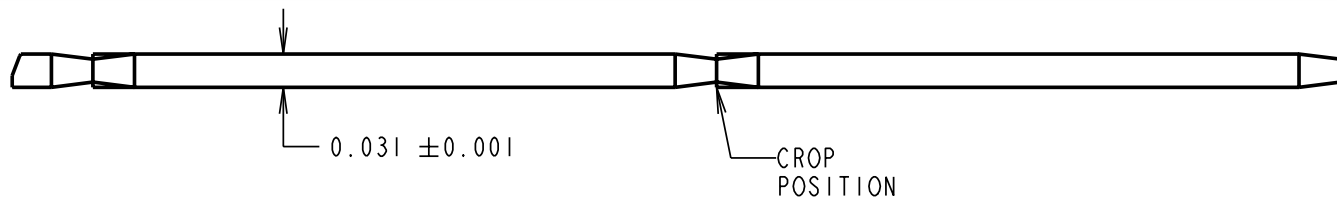
©

NOT TO SCALE

THIRD ANGLE PROJECTION

ALL DIMENSIONS IN ~~mm~~

INCHES



PART No.	DIM 'A'	PCB THICKNESS
S505-XX	0.360-0.372	0.063
S506-XX	0.392-0.403	0.094

NOTES:

1. QUANTITY PER REEL = 10K.
REEL WEIGHT = 5.9kg (INCLUDING REEL).
2. RECOMMENDED MOUNTING HOLE SIZE = $\varnothing 0.049" \pm 0.0024"$.
3. ALL DIMENSIONS ARE ± 0.004 UNLESS OTHERWISE STATED.

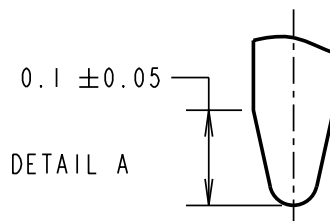
ORDER CODE:

S5XX-XX

TYPE: 05 OR 06
(SEE TABLE)

FINISH

- 00 - UNPLATED
- 06 - 160 μ " TIN/LEAD
- 46 - 160 μ " 100% TIN



RA	16	09.06.08	10052
NAME	ISS.	DATE	C/NOTE
APPROVED:		R. ADDE	
CHECKED:		M.G. PLESTED	
DRAWN:		I. SANDY	
CUSTOMER REF.:			
ASSEMBLY DRG:			

HARWIN

HARWIN USA TEL: 603 893 5376 FAX: 603 893 5396 mis@harwin.com	HARWIN Europe (UK) TEL: 023 9231 4545 FAX: 023 9231 4590 mis@harwin.co.uk	HARWIN Asia TEL: +65 6 779 4909 FAX: +65 6 779 3868 mis@harwin.com.sg
------------------------------------------------------------------------	------------------------------------------------------------------------------------	--------------------------------------------------------------------------------

THIS DRAWING AND ANY INFORMATION OR DESCRIPTIVE MATTER SET OUT HEREON ARE CONFIDENTIAL AND COPYRIGHT PROPERTY OF THE HARWIN GROUP AND MUST NOT BE DISCLOSED, LOANED, COPIED OR USED FOR MANUFACTURING, TENDERING OR FOR ANY OTHER PURPOSE WITHOUT THEIR WRITTEN PERMISSION.

TOLERANCES
~~X = ±1mm~~
~~X.X = ±0.25mm~~
~~X.XX = ±0.10mm~~
~~X.XXX = ±0.01mm~~
 ANGLES = ±5°
 UNLESS STATED

MATERIAL:
BRASS CW508L HARD TO BS EN 1652 (CuZn37 HARD)

FINISH: SEE ORDER CODE

S/AREA: mm²

TITLE:
0.110" BLADE HORIZONTAL REELED TAB TERMINAL

DRAWING NUMBER:
S505-XX / S506-XX

SHT
4
OF
4