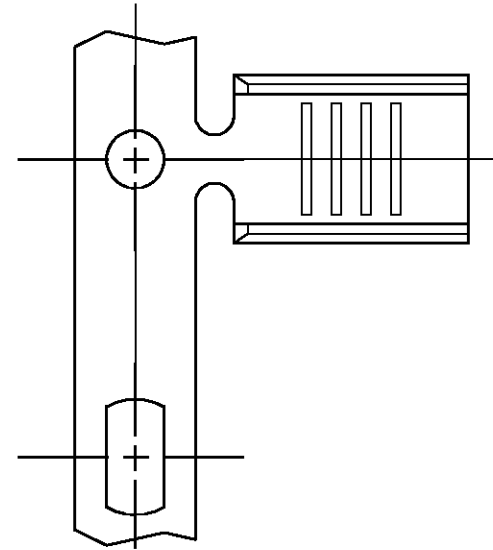
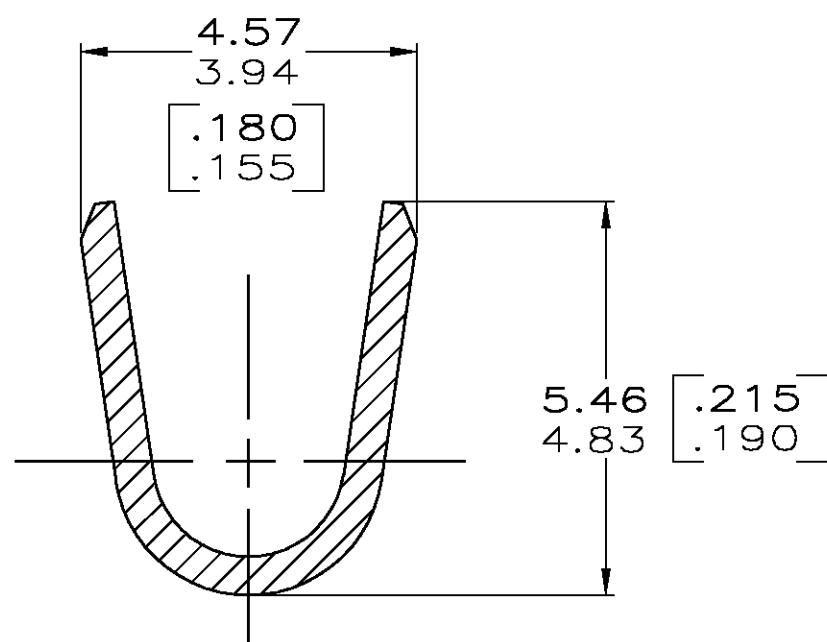
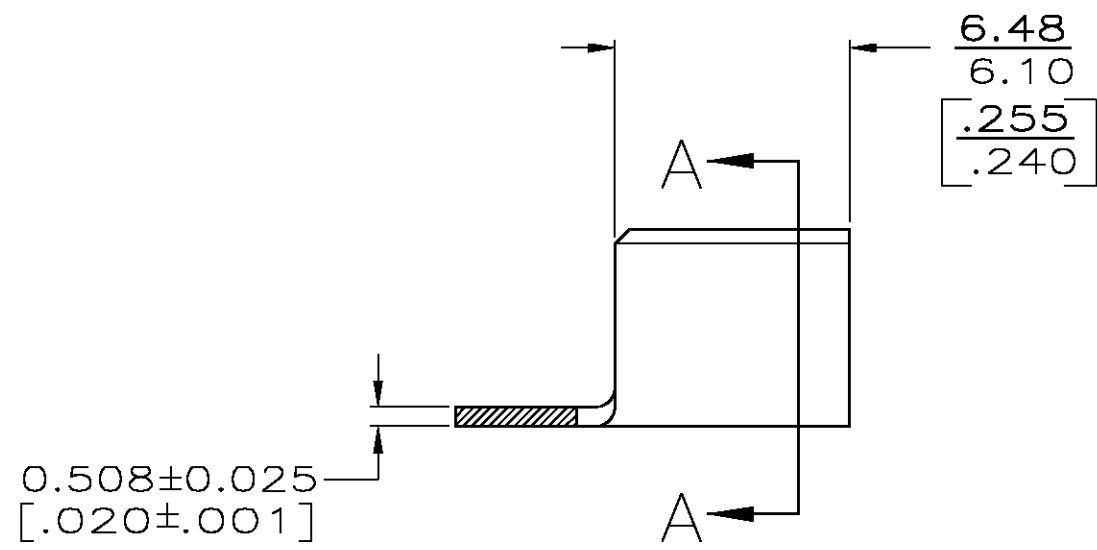


THIS DRAWING IS UNPUBLISHED. RELEASED FOR PUBLICATION
 © COPYRIGHT BY TYCO ELECTRONICS CORPORATION. ALL RIGHTS RESERVED.

LOC	DIST	REVISIONS					
AF	50	P	LTR	DESCRIPTION	DATE	DWN	APVD
		M		REVISED PER 0G3A-0514-04	01OCT04	JR	GP



- 1 CONTINUOUS STRIP ON REEL.
- △2 0.002032 [.000080] MIN TIN PLATE.
- △3 0.00254 [.000100] MIN NICKEL PLATE.
- △4 CRIMP WIDTH = .140 F TYPE
CRIMP HEIGHT (±.002) = (TOTAL CMA + 14,400) / 223,100.
- △5 PRELIMINARY - NOT FOR PRODUCTION.



SECTION A-A
SCALE 10:1

OBSOLETE	△2	H00 COPPER	4000-9000 CMA △4	485043-7/5
		-		-
		-		-
	△3	T3 STEEL		485043-4
	△2	T3 STEEL		485043-3
	△2	H04 BRASS		485043-2
		H04 BRASS		485043-1
	FINISH	MATERIAL	WIRE RANGE	PART NO.

THIS DRAWING IS A CONTROLLED DOCUMENT.		DWN PHILLIP M FORTNEY 11/MAY/95	Tyco Electronics Corporation Harrisburg, Pa 17105-3608	
DIMENSIONS: INCHES		CHK JEFF R RUTH 11/MAY/95	NAME SPLICE	
TOLERANCES UNLESS OTHERWISE SPECIFIED:		APVD MARK BARNABA 11/MAY/95	PRODUCT SPEC -	
0 PLC ± -		APPLICATION SPEC 114-2088	SIZE A3	CAGE CODE 00779
1 PLC ± -		WEIGHT -	DRAWING NO C-485043	RESTRICTED TO -
2 PLC ± 0.25 [.010]		CUSTOMER DRAWING		
3 PLC ± -		SCALE 5:1		
4 PLC ± -		SHEET 1 OF 1		
ANGLES ± -		REV M		
FINISH SEE TABLE				