

DESCRIPTION

The 8T23 is a Dual Line Driver designed to meet all of the requirements of the IBM System/360, System/370 I/O interface specifications (IBM Specification GA 22-6974-0).

The low impedance emitter follower output will drive terminated lines such as coaxial cable or twisted pair. The output is protected against accidental shorting by an internal clamping network which turns on once the output voltage drops below approximately 1.5 volts. The uncommitted emitter output structure allows Dot-OR logic to be performed as in "Party-Line" operations.

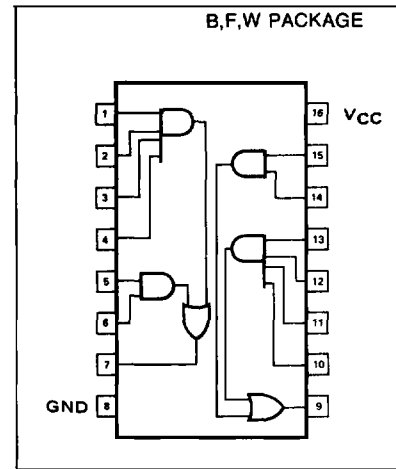
Multiple emitter inputs allow the 8T23 to interface with standard TTL or DTL systems and the circuit operates from a single +5 volt power supply.

Additional logic incorporated in the 8T23 Dual Line Driver can be used during the power-up and power-down sequence to ensure that no spurious noise is generated on the line.

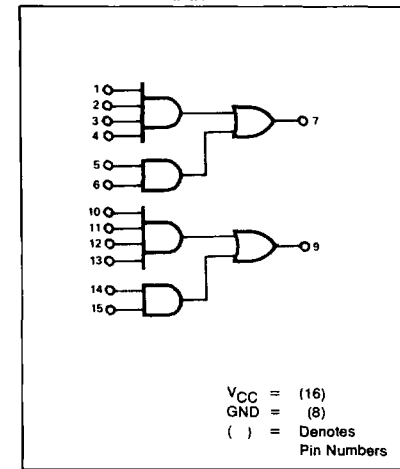
FEATURES

- IOUT = 59.3mA AT 3.11 VOLTS
- UNCOMMITTED EMITTER OUTPUT STRUCTURE FOR PARTY-LINE OPERATION
- SHORT-CIRCUIT PROTECTION
- SINGLE 5 VOLT POWER SUPPLY.
- AND-OR LOGIC CONFIGURATION

PIN CONFIGURATION



LOGIC DIAGRAM

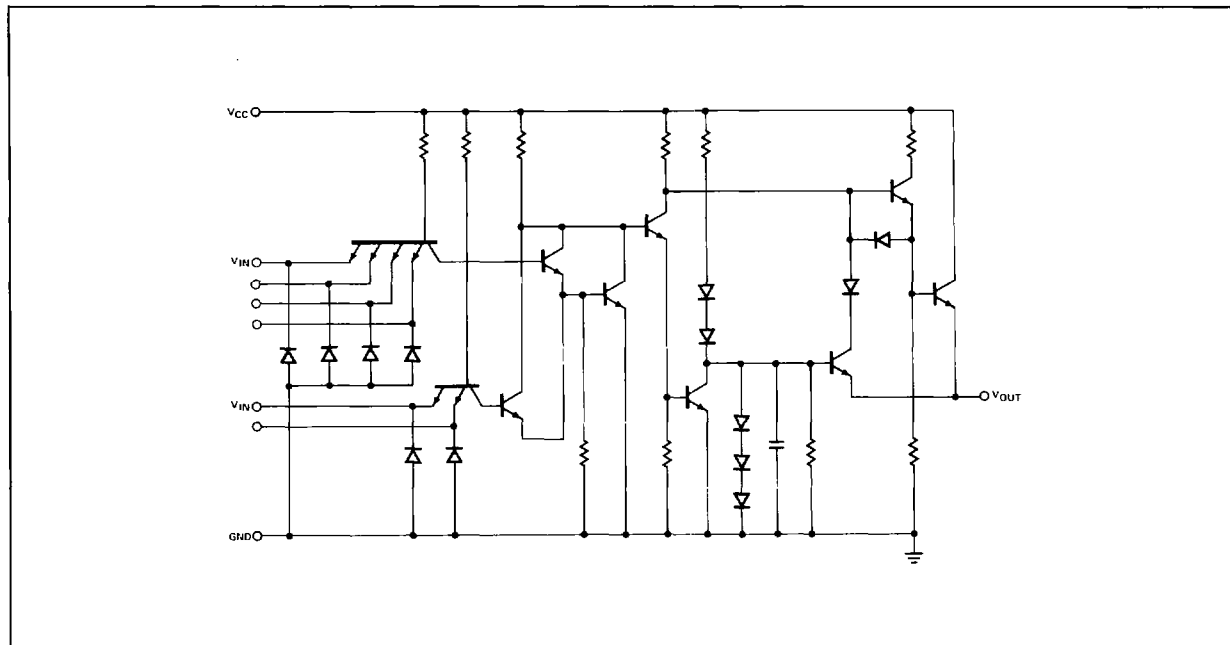


SWITCHING CHARACTERISTICS VCC = 5.0V, TA = 25° C1,2

PARAMETER	LIMITS			UNIT
	MIN	TYP	MAX	
t _{on} , Turn-On Delay		12	20	ns
		15	25	ns
t _{off} , Turn-Off Delay		12	20	ns
		20	35	ns

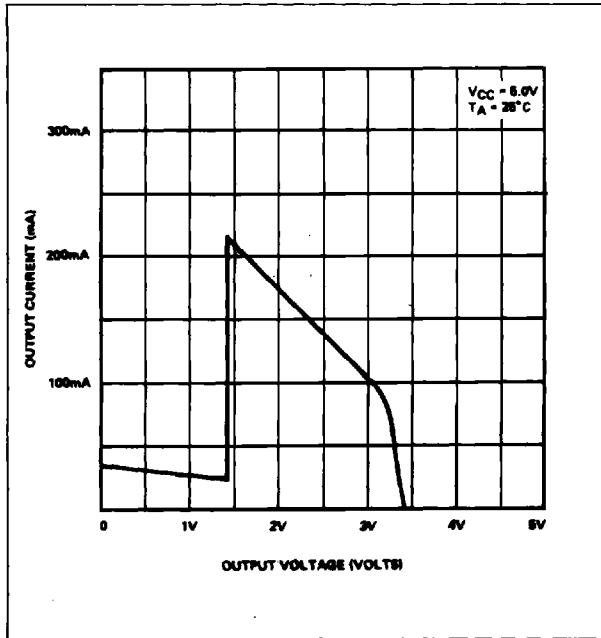
- NOTES:
1. RL = 50Ω to ground.
 2. Load is 50Ω in parallel with 100pF.
 3. Reference AC Test Circuit and Pulse Requirements

CIRCUIT SCHEMATIC

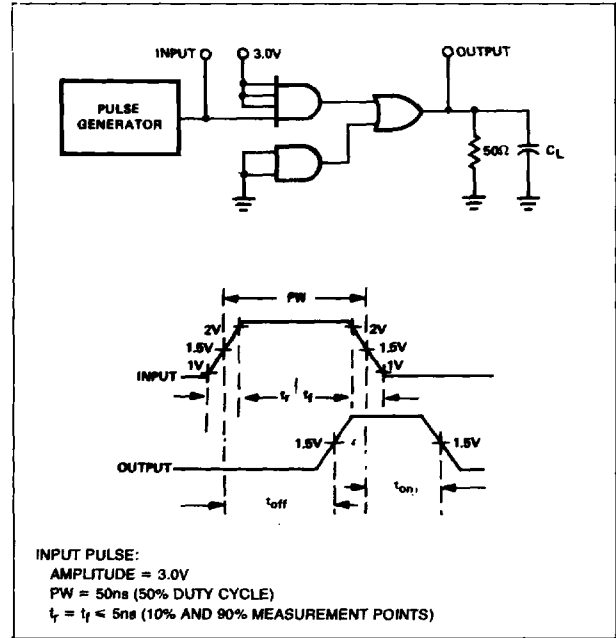


INTERFACE

TYPICAL OUTPUT CHARACTERISTICS



AC TEST FIGURE AND WAVEFORMS



TYPICAL APPLICATIONS

