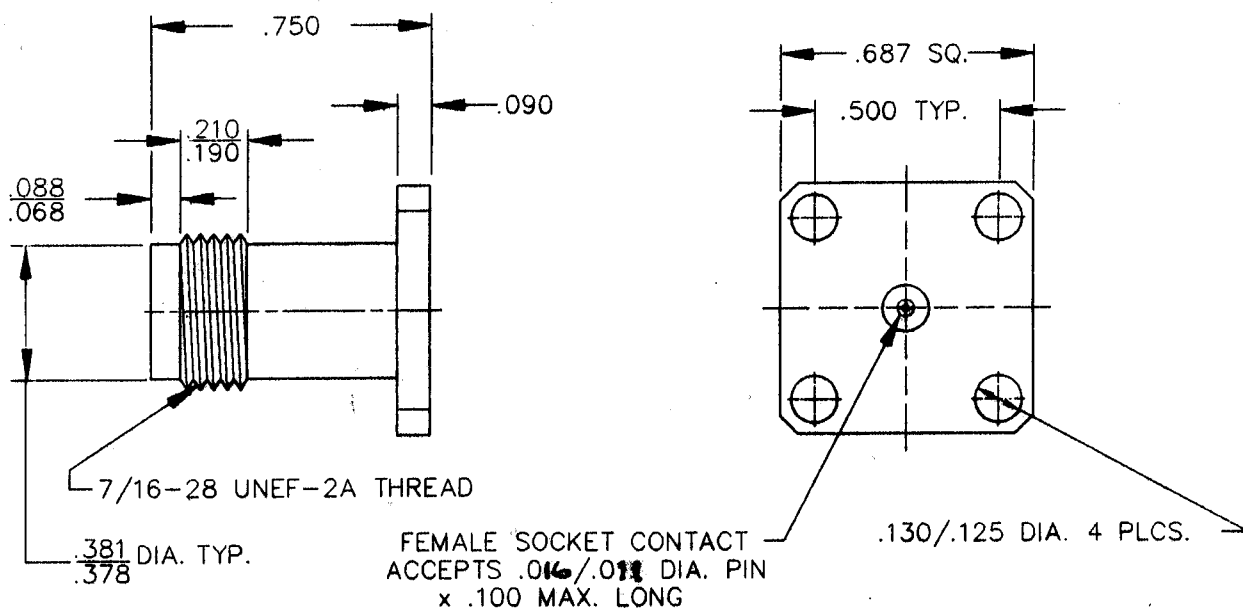


SPECIFICATION CONTROL DRAWING



1. MATING INTERFACE DIMENSIONS PER MIL-C-39012/TNC SERIES AND DYNAWAVE MD - 85 (KTNC 18 GHz)

2. ELECTRICAL

Frequency Range GHz	-----	D.C. TO 18.0 GHZ
VSWR (max.)*	-----	1.05 + .007 x FGHz
Insertion Loss (dB max.)*	-----	.04 dB x $\sqrt{\text{FGHz}}$
Nominal Impedance (ohms)	-----	50
Voltage Rating (max. vrms)	-----	250
RF Leakage (min. dB down)	-----	100 dB - FGHz
Temperature Rating (degrees centigrade)	-----	-65°C TO +165°C
Dielectric Withstanding Voltage (max. vrms)	-----	750
Insulation Resistance (min. megohms)	-----	5000
Contact Resistance		
• Center Contact (max. milliohms)	-----	5.0
• Outer Contact (max. milliohms)	-----	2.0

* Terminated in a 50 ohm load

REV.	DCN. NO.	DATE	APP.	DIMENSIONS ARE IN INCHES TOLERANCES	DYNAWAVE Incorporated. Georgetown, MA 01833
-	478	11/87	TS	DECIMALS .X ± .030 .XX ± .010 .XXX ± .005 FRACTIONAL ± 1/64 ANGULAR X° ± 1'0" X°X' ± 15'	
				DRAWN TS DATE 11/87	TITLE KTNC JACK, 4 HOLE FLG. FIELD REPLACEABLE
				APPROVED DGG DATE 11/87	
				SHEET 1 OF 2	DWG NO. 8554-0081-6215

SPECIFICATION CONTROL DRAWING

3. MECHANICAL

Captivation- Center Contact

• Mil Axial Force -----	6.0 LBS.
• Mil Radial Torque -----	N/A
Center Contact Axial Forces	
• Insertion (max. ounces) -----	INTERFACE 24.0 ; REAR 32.0
• Withdrawal (min. ounces) -----	INTERFACE 2.0 ; REAR 1.0
Connector Engagement & Disengagement (max. in. lbs.) -----	2.0
Connector Durability (min. cycles) -----	500
Recommended Mating Torque -----	30 TO 35 INCH LBS.

4. ENVIRONMENTAL

Temperature Cycling	Mil-Std-202, Method 102, Cond. C (-65°C to + 200°C)
Shock	Mil-Std-202, Method 213, Cond. I (100 G's)
Vibration	Mil-Std-202, Method 204, Cond. D (20 G's)
Moisture Resistance	Mil-Std-202, Method 106, Less Step 7b
Corrosion	Mil-Std-202, Method 101, Cond. B (48 hours)
Barometric Pressure (Altitude)	Mil-Std-202, Method 105, Cond. C (70,000ft.) (190 vrms)

5. MATERIAL

BODY -----	STAINLESS STEEL PER AMS-5640, TYPE 303, COND. A
CONTACT -----	BERYLLIUM COPPER PER QQ-C-530, COND. H.T. ALLOY 173
DIELECTRIC -----	TEFLON PER MIL-P-19468 AND L-P-403, TYPE I

6. FINISH

BODY -----	PASSIVATE PER QQ-P-35A, TYPE I
CONTACT -----	GOLD PER MIL-G-45204, TYPE I, GRADE C, CLASS 2 OVER COPPER PER MIL-C-14550, CLASS 4
DIELECTRIC -----	NONE

DYNAWAVE
Incorporated.

SHEET 2 OF 2

DWG.
NO. 8554-0081-6215

REV
