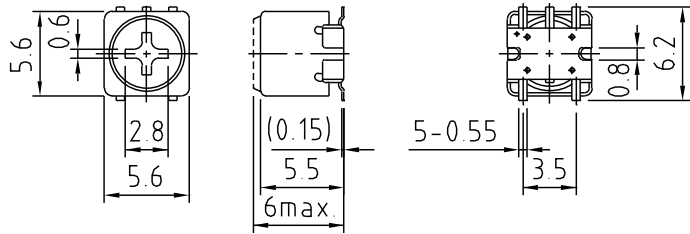


コーナセンサ用コイル Coils for Corner sensor K5-N, K5-R, K7-R Series

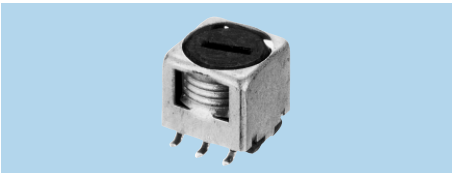
K5-N



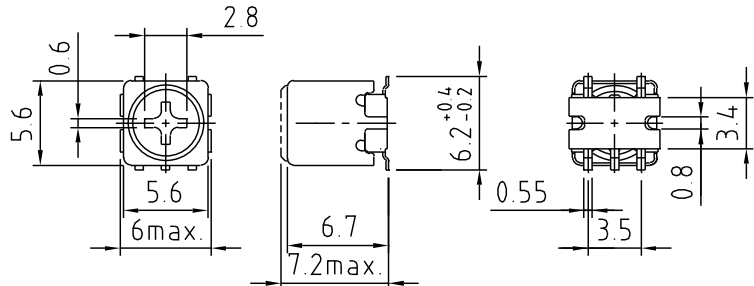
- | | |
|----------------------------------|--------------------|
| 仕様/Specifications | 特長/Features |
| (1) 1~5,900 μ H | SMD |
| (2) 0.1~20MHz | 1,000pcs./Reel |
| (3) F: $\pm 2\%$
L: $\pm 5\%$ | |
| (4) 5~15,000pF $\times 2$ | |
| (5) 50~100 | |



K5-R2



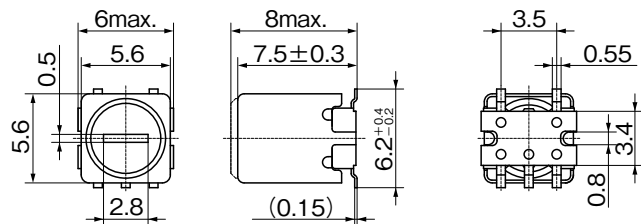
- | | |
|----------------------------------|--------------------|
| 仕様/Specifications | 特長/Features |
| (1) 1~6,700 μ H | SMD |
| (2) 10~500kHz | 500pcs./Reel |
| (3) F: $\pm 2\%$
L: $\pm 4\%$ | |
| (4) 5~15,000pF $\times 2$ | |
| (5) 50~80 | |



K5-RS



- | | |
|----------------------------------|--------------------|
| 仕様/Specifications | 特長/Features |
| (1) 0.1~8.5mH | SMD |
| (2) 10~500kHz | 500pcs./Reel |
| (3) F: $\pm 2\%$
L: $\pm 5\%$ | |
| (4) 5~15,000pF $\times 2$ | |
| (5) 50~80 | |



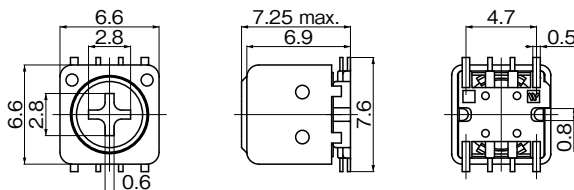
- (1) インダクタンス/Inductance
 (2) 使用周波数/Operational frequency
 (3) F&L可変範囲/Variable range of F & L
 (4) 内蔵可能容量/Internal capacitance
 (5) 無負荷 Q/Unloaded Q

K5-R3

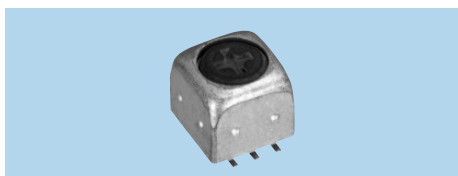


仕様/Specifications

- (1) 1~4mH
- (2) 40~100kHz
- (3) F: ±2%
L: ±5%
- (4) -
- (5) 40~60



K5-R4

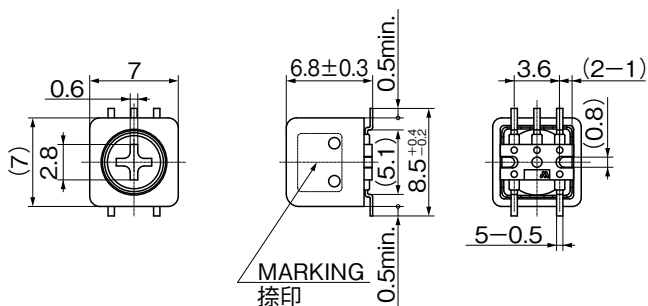


仕様/Specifications

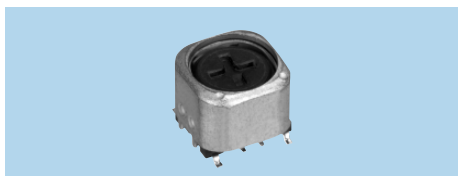
- (1) 0.1~5.6mH
- (2) 10~100kHz
- (3) -
- (4) -
- (5) 40~60

特長/Features

- SMD
- 高シールド特性/
High shield property
- 500pcs./Reel



K7-R

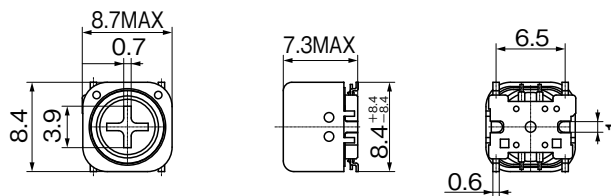


仕様/Specifications

- (1) 0.1~8.5mH
- (2) 10~100kHz
- (3) F: ±2%
L: ±5%
- (4) -
- (5) 40~60

特長/Features

- SMD
- 2重シールドケース/
Double shield case
- 400pcs./Reel



- (1) インダクタンス/Inductance
- (2) 使用周波数/Operational frequency
- (3) F&L可変範囲/Variable range of F & L
- (4) 内蔵可能容量/Internal capacitance
- (5) 無負荷 Q/Unloaded Q