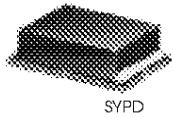


PHASE DETECTORS

Surface Mount [□] Plug-In & Coaxial

HIGH OUTPUT 1000 mV DC output, 1 to 400 MHz

SURFACE MOUNT



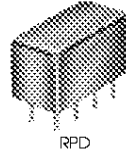
SYPD



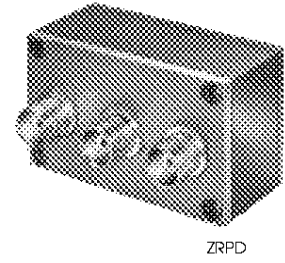
LPD



MPD



RPD

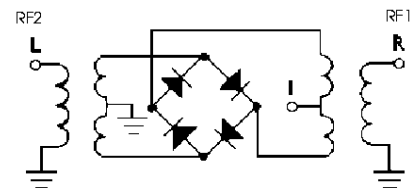


ZRPD

MODEL NO.	FREQUENCY MHz		POWER IN		SCALE FACTOR mV/degree	IMPEDANCE (ohms) OUTPUT LOAD	ISOLATION (dB) RF1-RF2 Min.	OUTPUT POLARITY RF1/RF2 in-phase	DC OUTPUT (mV) Note 2				FIGURE-OF-MERIT M Typ.	CAPD DATA <small>(See RF/IF Designer Handbook Page)</small>	CASE STYLE Note B	C o n n e c t i o n	PRICE \$ Qty. (1-9)
	RF1	RF2	RF1	RF2					MAX Typ.	Min.	OFFSET Typ.	Max.					
SYPD-1	1-100	DC-50	7	8	8	500	40	neg.	1000	700	0.2	1	143	12-5	TTT167	ec	14.95
SYPD-2	10-200	DC-50	7	8	8	500	40	neg.	1000	700	0.3	1	143	12-6	TTT167	ec	18.95
LPD-1	1-100	DC-50	7	8	8	500	40	neg.	1000	700	0.2	1	143	12-5	BB48	eb	26.45
MPD-1	1-100	DC-50	7	8	8	500	40	neg.	1000	700	0.2	1	143	12-5	A11	ea	21.45
MPD-2	10-200	DC-50	7	8	8	500	40	neg.	1000	700	0.3	1	143	12-6	A11	ea	24.95
MPD-21	50-400	DC-50	7	7	7	500	40*	neg.	800	500	0.5	1	120	12-5	A11	ea	26.95
RPD-1	1-100	DC-50	7	8	8	500	40	neg.	1000	700	0.2	1	143	12-5	A01	ea	18.45
RPD-2	5-150	DC-50	7	8	8	500	40	neg.	1000	700	0.3	1	143	12-6	A01	ea	20.95
ZRPD-1	1-100	DC-50	7	8	8	500	40	neg.	1000	700	0.2	1	143	12-5	M22	gg	57.95

NOTES:

- Non-hermetic
- * 30 dB from 200 to 400 MHz
- A. General Quality Control Procedures, Environmental Specifications, Hi-Rel and MIL description are given in "General Information (Section 0).
- B. Connector types and case mounted options, case finishes are given in section 0, see "Case Styles & Outline Drawings".
- C. Prices and Specifications subject to change without notice.
 1. Absolute maximum power, voltage and current rating:
 - 1a. RF Input power, 50mW
 - 1b. Peak IF current, 20mA
 2. For LPD-1, MPD-1, RPD-1 & ZRPD-1 DC output decreases to 550 mV over 1-10 MHz as temperature decreases to -55°C



pin connections

see case style outline drawings for pin locations

PORT	ea	eb	ec	eg
RF REF (RF2)	8	8	2	1
RF IN (RF1)	1	5	1	3
DC OUT (I)	3,4	4	3	2
GND EXT.	2,5,6,7	1,2,3,6,7	4,5,6	—
CASE GND	2	1,2,3,6,7	—	—

NSN GUIDE

MCL NO.	NSN
MPD-1	6625-01-294-7152
MPD-21	5895-01-389-3572
RPD-1	5895-01-250-8525