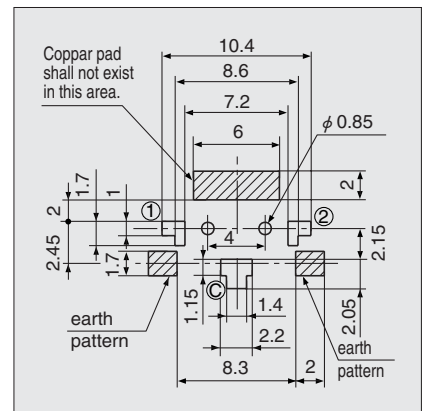
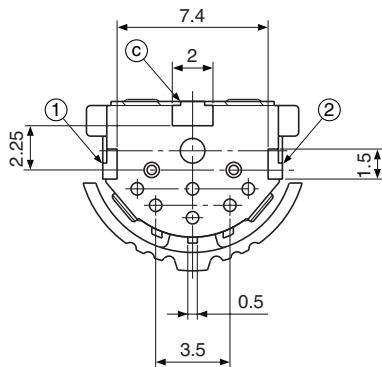
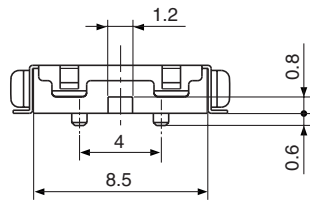
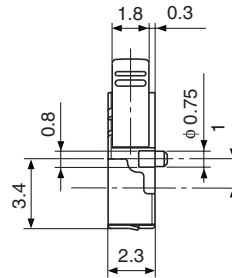
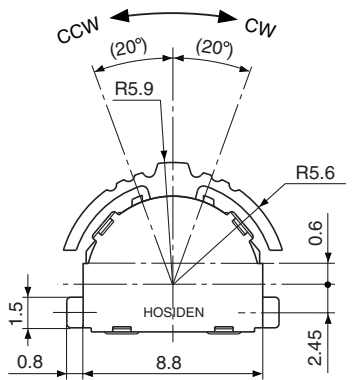
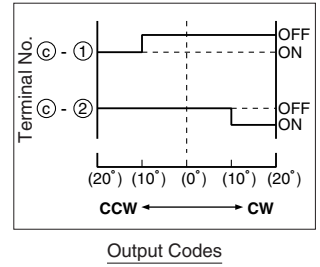
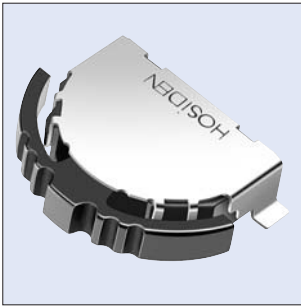


**HXW0783-510011**

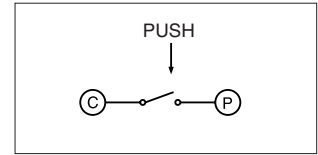
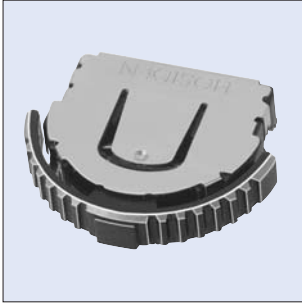


PCB Layout  
(Top View)

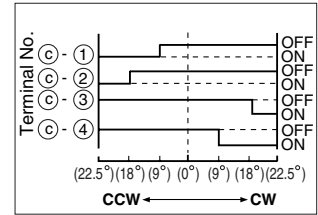
定 格 Ratings	10 mA 5 V DC max. 0.1 mA 1 V DC min.
出力電圧 Output Voltage	1 V max. at 1 mA 5 V DC
絶縁抵抗 Insulation Resistance	100 MΩ min. at 100 V DC
絶縁耐力 Dielectric Strength	100 V AC / 1 minute
動作力 Dielectric Strength	0.5 <sup>+0.3</sup> / <sub>-0.2</sub> N
動作寿命 Operating Life	200,000 cycles

### HXW0780/HXW0785

with Push Switch

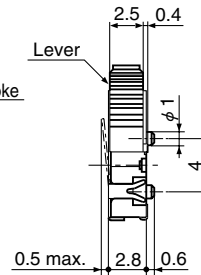
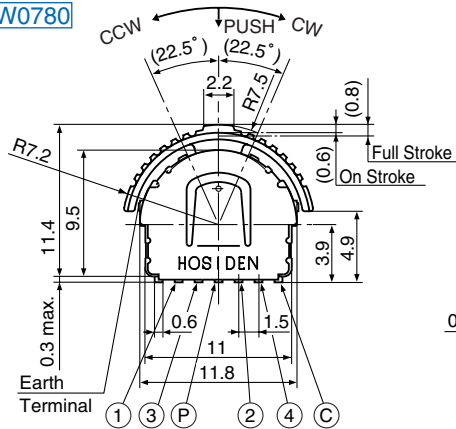


Circuit Diagram  
Push Direction



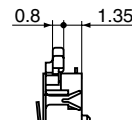
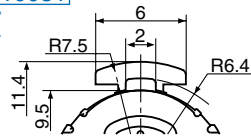
Output Codes

#### HXW0780



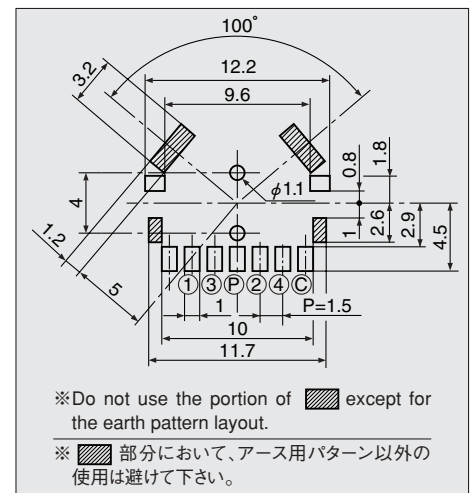
#### HXW0785-010031

レバー後付けタイプ  
Non-actuator



Model No.	Lever Color
HXW0780-010031	Dark gray
HXW0780-010041	Black

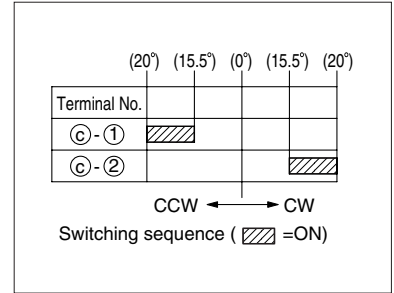
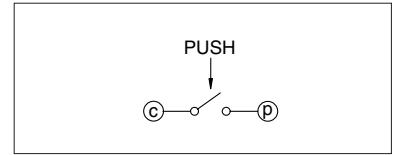
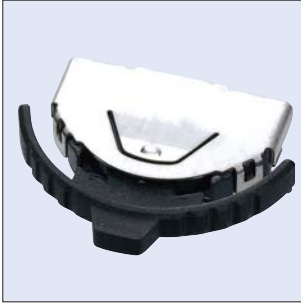
定格 Ratings	10 mA 5 V DC max.	
	0.1 mA 1 V DC min.	
出力電圧 Output Voltage	1 V max. at 1 mA 5 V DC	
絶縁抵抗 Insulation Resistance	100 MΩ min. at 100 V DC	
絶縁耐力 Dielectric Strength	100 V AC / 1 minute	
動作力 Operating Force	回転方向 Shuttle Direction	0.65 ± 0.3 N
	プッシュ方向 Push Direction	2 ± 1 N
動作寿命 Operating Life	100,000 cycles	



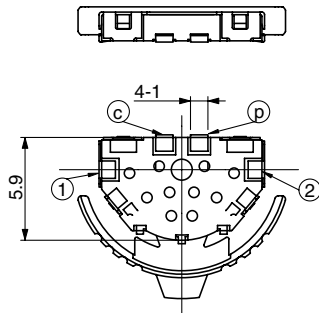
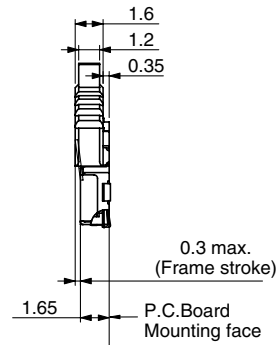
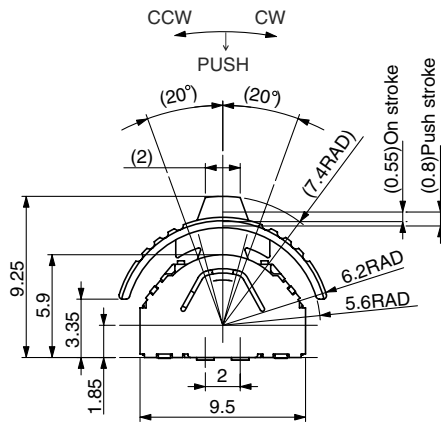
Pad Layout  
(Top View)

**HXW0786-010010**

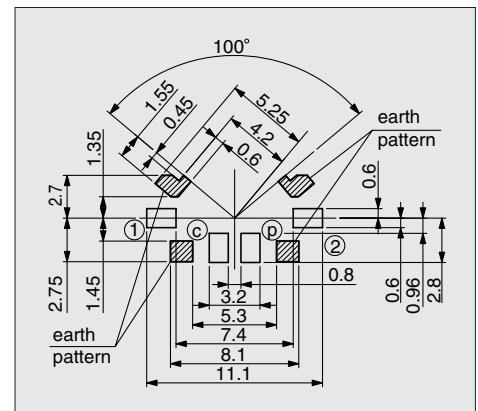
with Push Switch



Output Codes



定 格 Ratings	10 mA 5 V DC max. 0.1 mA 1 V DC min.	
出力電圧 Output Voltage	1 V max. at 1 mA 5 V DC	
絶縁抵抗 Insulation Resistance	100 MΩ min. at 100 V DC	
絶縁耐力 Dielectric Strength	100 V AC / 1 minute	
動作力 Operating Force	回転方向 Shuttle Direction	0.65 ± 0.3 N
	プッシュ方向 Push Direction	2 ± 1 N
動作寿命 Operating Life	100,000 cycles	



Pad Layout  
(Top View)