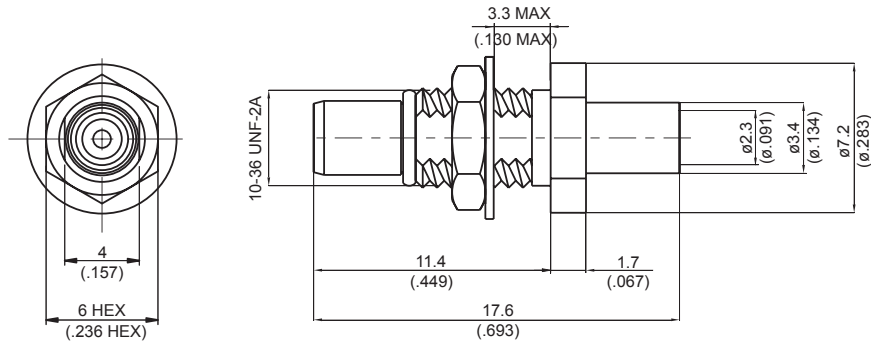


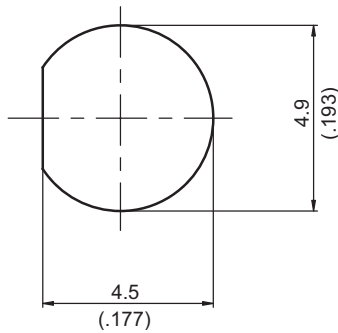
SMC8305A-0085

SMC Jack Solder For Bulkhead

50Ω



MOUNTING HOLE :



Parts	Material	Plating (Micro-inch)
Hex Nut	Brass	Gold 5 Over Nickel 50 Over Copper 50
Lock Washer	Brass	Gold 5 Over Nickel 50 Over Copper 50
Contact Pin	Brass	Gold 20 Over Nickel 50 Over Copper 50
O-Ring	Silicone	
Insulator	Teflon	
Body	Brass	Gold 5 Over Nickel 50 Over Copper 50

Weight: 1.49 g

Suitable Cables: Semi-rigid.085

This part number complies with RoHS.

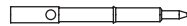
Notice: JYEBAO reserves the right to make modifications deemed appropriate.

CABLE ASSEMBLY INSTRUCTION

SMC8305A-0085

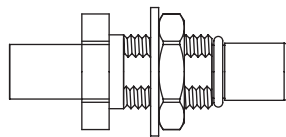
JYE BAO CO., LTD.

B



CONTACT PIN

A



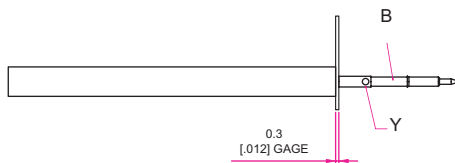
BODY+WASHER
+HEX NUT

DIAGRAM

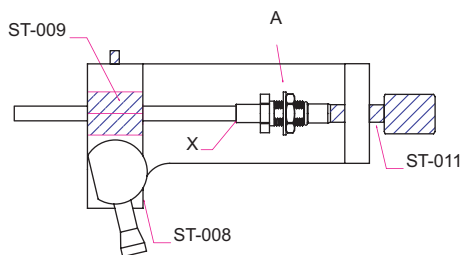
ASSEMBLY INSTRUCTION



Step 1: STRIP AS SHOWN .



Step 2: PUT 0.3 MM GAGE IN PLACE, INSERT CABLE'S CENTER CONDUCTOR INTO CENTER PIN "B" AND SOLDER IN "Y".



Step 3: INSERT PREPARED CABLE INTO CONNECTOR BODY "A" AND USE SOLDERING FIXTURE "ST-008", INSERT TOOL "ST-009" AND LOCATOR TOOL "ST-011" TO FIX THE CONNECTOR. SOLDER IN "X".

This part number complies with RoHS.

Notice: JYEBAO reserves the right to make modifications deemed appropriate.