

MATERIALS AND FINISHES

BODY/CAP: ZINC ALLOY
PLATED: TIN

CENTER CONTACT: PHOSPHOR BRONZE
OR BRASS

PLATED: GOLD

COLOR RING : HIGH TEMPERATURE
PLASTIC

COLOR: SEE TABLE

KEYING: SEE TABLE

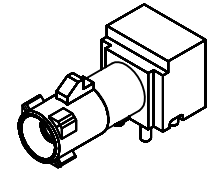
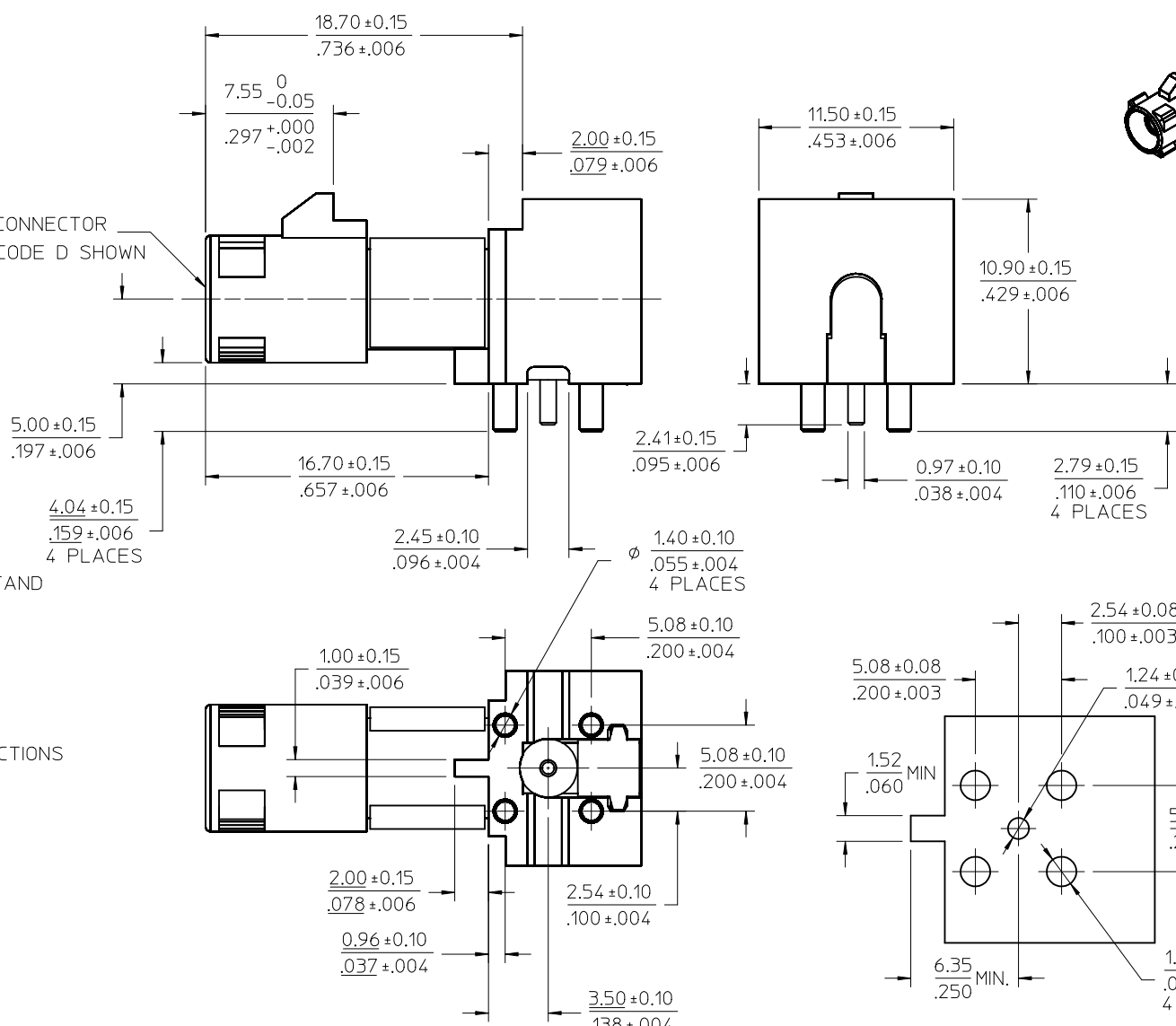
INSULATOR: TEFLON

RETENTION SPECIFICATION:

THE FAKRA CONNECTOR SHOULD WILL WITHSTAND
A LONGITUDINAL FORCE OF 110 N (24.75 LBS)

SEE SHEETS 3 AND 4 FOR PACKAGING INSTRUCTIONS

FAKRA CONNECTOR
KEYING CODE D SHOWN



RECOMMENDED CIRCUIT BOARD PATTERN AND
MINIMUM BOARD AREA NEEDED FOR CONNECTOR
ANTI-TIPPING FEATURE TO FUNCTION

PS-89675-3310	PRODUCT SPECIFICATION
MIL-STD-348A, FIG. 311-1	INTERFACE
SPECIFICATION	DESCRIPTION

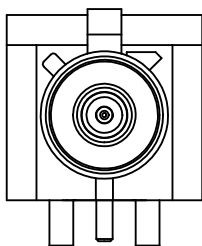
CHG: ADD.096+.004	DESCRIPTION
EC NO: URF2011-0029	2010/07/14
DRWN:WIENER	2010/07/14
CHKD:AZR	2010/08/25
APPR:WIENER	
REV	
B3	

QUALITY SYMBOLS	▽=0
▽=0	

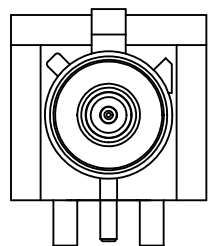
GENERAL TOLERANCES (UNLESS SPECIFIED)	mm	INCH
4 PLACES	± .15	± .006
3 PLACES	± .10	± .004
2 PLACES	± .05	± .002
1 PLACE	± .02	± .001
ANGULAR	± 2 °	
DRAFT WHERE APPLICABLE MUST REMAIN WITHIN DIMENSIONS		

DIMENSION STYLE	MM/IN
DRAWN BY	DATE
SSS	2002/08/19
CHECKED BY	DATE
TEF	2002/08/19
APPROVED BY	DATE
MHUANG	2010/04/21
MATERIAL NO.	DOCUMENT NO.
SEE SHEET 2	SD-73404-116

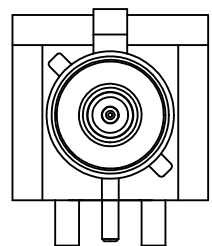
SCALE	DESIGN UNITS	THIRD ANGLE PROJECTION
	METRIC	
FAKRA JACK, R/A ,PCB		
50 OHMS		
TAPE&REEL, FAKRA-J/PCB		
MOLEX INCORPORATED		
SHEET NO.	1 OF 4	
THIS DRAWING CONTAINS INFORMATION THAT IS PROPRIETARY TO MOLEX INCORPORATED AND SHOULD NOT BE USED WITHOUT WRITTEN PERMISSION		



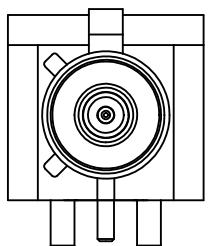
CODE - A



CODE - B

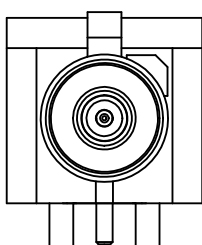


CODE - C

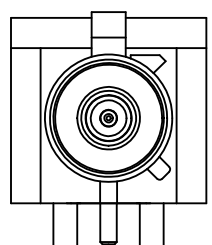


CODE - D

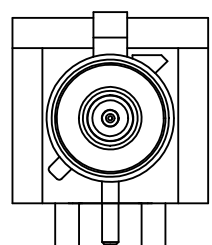
N	PASTEL GREEN	73404-1173
M	PASTEL ORANGE	73404-1172
L	CARMINE RED	73404-1171
Z	WATER BLUE	73404-1170
K	CURRY YELLOW	73404-1169
I	BEIGE	73404-1168
H	VIOLET	73404-1167
G	GRAY	73404-1166
F	BROWN	73404-1165
E	GREEN	73404-1164
D	BORDEAUXVIOLET	73404-1163
C	BLUE	73404-1162
B	SIGNAL WHITE	73404-1161
A	BLACK	73404-1160
KEYING CODE	COLOR	PART NO.



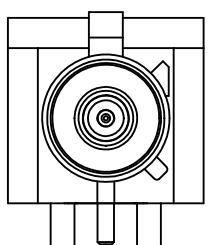
CODE - E



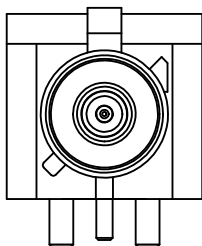
CODE - F



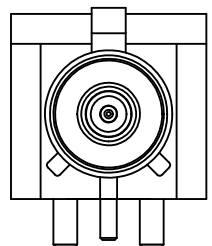
CODE - G



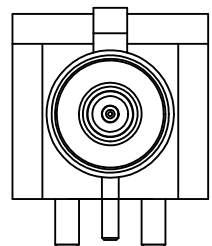
CODE - H



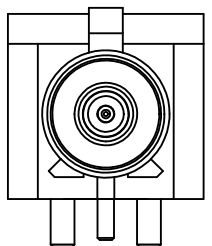
CODE - I



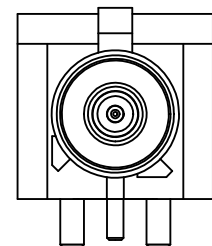
CODE - K



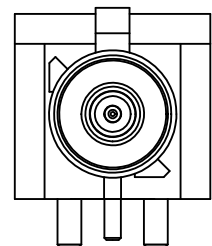
CODE - Z



CODE - L



CODE - M



CODE - N

CHG: SEE SHEET 1	2010/07/14
EC NO: URF2011-0029	2010/07/14
DRWN: JWIENER	2010/07/14
CHKD: AZR	2010/07/14
APPR: JWIENER	2010/08/25
REV	DESCRIPTION
B3	

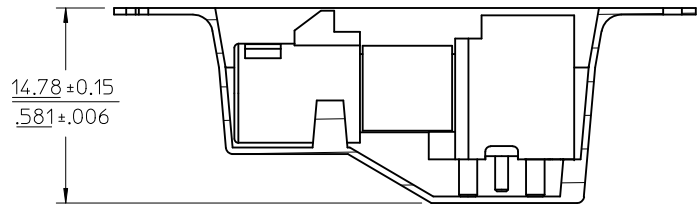
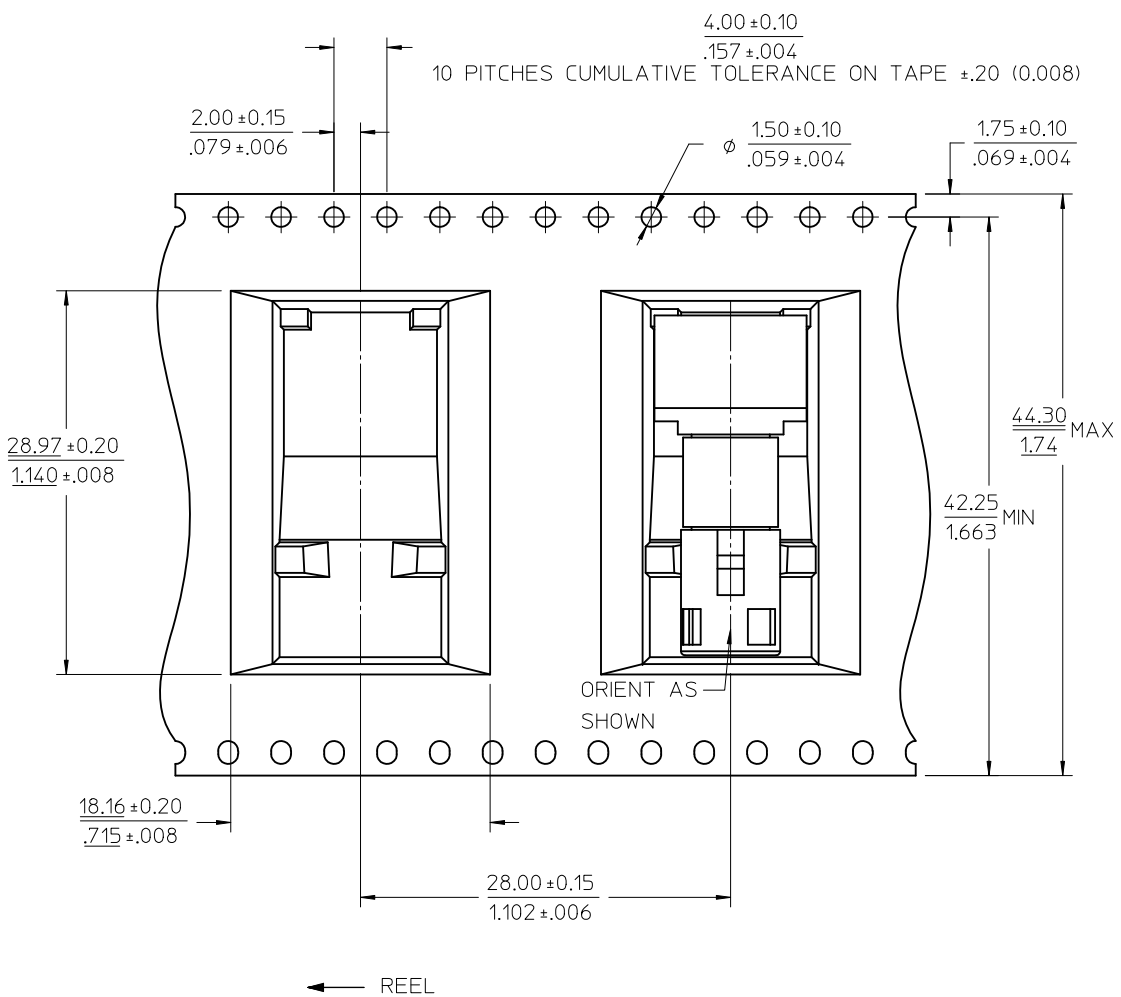
QUALITY SYMBOLS	▽=0
	▽=0

GENERAL TOLERANCES (UNLESS SPECIFIED)	mm	INCH
4 PLACES	± .005	± .0004
3 PLACES	± .005	± .0004
2 PLACES	± .005	± .0004
1 PLACE	± .005	± .0004
ANGULAR ± 2 °		
DRAFT WHERE APPLICABLE MUST REMAIN WITHIN DIMENSIONS		

DIMENSION STYLE		SCALE
MM/IN		METRIC
DRAWN BY	DATE	TITLE
SSS	2002/08/19	FAKRA JACK, R/A ,PCB
CHECKED BY	DATE	50 OHMS
TEF	2002/08/19	TAPE&REEL, FAKRA-J/PCB
APPROVED BY	DATE	MATERIAL NO.
MHUANG	2010/04/21	SEE TABLE
DOCUMENT NO.		SHEET NO.
SD-73404-116		2 OF 4

THIRD ANGLE PROJECTION
MOLEX INCORPORATED
THIS DRAWING CONTAINS INFORMATION THAT IS PROPRIETARY TO MOLEX INCORPORATED AND SHOULD NOT BE USED WITHOUT WRITTEN PERMISSION

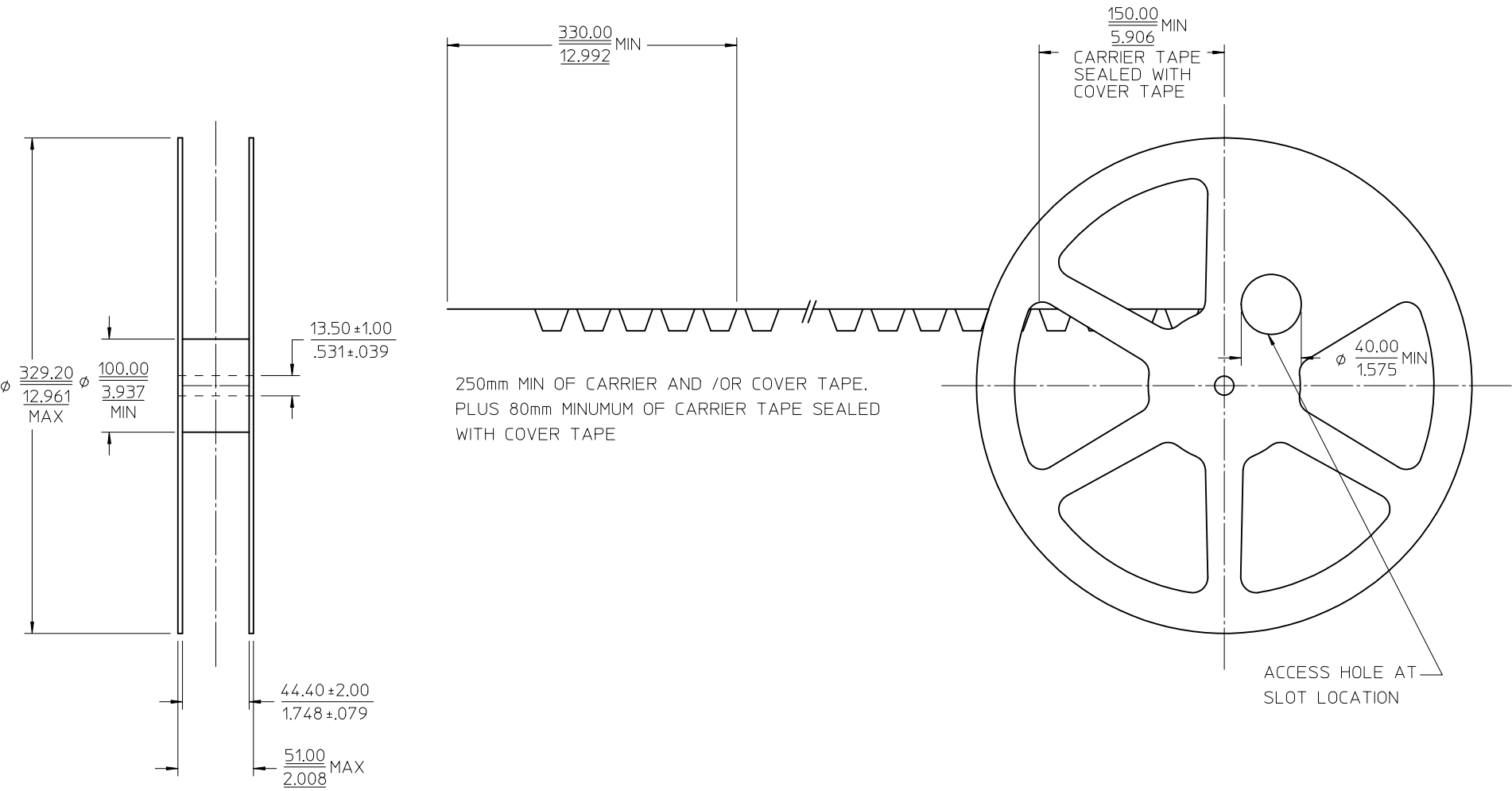
FEED DIRECTION →



← REEL

NOTES:
1. 160 CONNECTORS PER REEL ON 330.2 mm (13.0 IN) REEL

SEE SHEET 1 EC NO: URF2011-0029 DRWN: JWIENER 2010/07/14 CHKD: AZR 2010/07/14 APPR: JWIENER 2010/08/25	QUALITY SYMBOLS ▽=0 ▽=0	GENERAL TOLERANCES (UNLESS SPECIFIED)		DIMENSION STYLE MM/IN	SCALE METRIC	DESIGN UNITS METRIC	THIRD ANGLE PROJECTION		
		4 PLACES ± --- ± --- 3 PLACES ± --- ± --- 2 PLACES ± --- ± --- 1 PLACE ± --- ± ---	mm INCH	DRAWN BY DATE SSS 2002/08/19	CHECKED BY DATE TEF 2002/08/19	TITLE FAKRA JACK, R/A ,PCB 50 OHMS TAPE&REEL, FAKRA-J/PCB			
		ANGULAR ± 2 °		APPROVED BY DATE MHUANG 2010/04/21	MOLEX INCORPORATED				
		DRAFT WHERE APPLICABLE MUST REMAIN WITHIN DIMENSIONS		MATERIAL NO. SEE SHEET 2	DOCUMENT NO. SD-73404-116	SHEET NO. 3 OF 4			



SEE SHEET 1 EC NO: URF2011-0029 DRWN: JWIENER 2010/07/14 CHKD: AZR 2010/07/14 APPR: JWIENER 2010/08/25	QUALITY SYMBOLS $\blacktriangledown = 0$ $\blacktriangledown = 0$	GENERAL TOLERANCES (UNLESS SPECIFIED) <table border="1"> <tr> <th></th> <th>mm</th> <th>INCH</th> </tr> <tr> <td>4 PLACES</td> <td>$\pm .005$</td> <td>$\pm .0004$</td> </tr> <tr> <td>3 PLACES</td> <td>$\pm .005$</td> <td>$\pm .0004$</td> </tr> <tr> <td>2 PLACES</td> <td>$\pm .005$</td> <td>$\pm .0004$</td> </tr> <tr> <td>1 PLACE</td> <td>$\pm .005$</td> <td>$\pm .0004$</td> </tr> </table>		mm	INCH	4 PLACES	$\pm .005$	$\pm .0004$	3 PLACES	$\pm .005$	$\pm .0004$	2 PLACES	$\pm .005$	$\pm .0004$	1 PLACE	$\pm .005$	$\pm .0004$	DIMENSION STYLE MM/IN DRAWN BY: SSS DATE: 2002/08/19 CHECKED BY: TEF DATE: 2002/08/19 APPROVED BY: MHUANG DATE: 2010/04/21	SCALE: METRIC DESIGN UNITS: METRIC THIRD ANGLE PROJECTION	TITLE: FAKRA JACK, R/A ,PCB 50 OHMS TAPE&REEL, FAKRA-J/PCB
		mm	INCH																	
	4 PLACES	$\pm .005$	$\pm .0004$																	
	3 PLACES	$\pm .005$	$\pm .0004$																	
2 PLACES	$\pm .005$	$\pm .0004$																		
1 PLACE	$\pm .005$	$\pm .0004$																		
MATERIAL NO. SEE SHEET 2	DOCUMENT NO. SD-73404-116	SHEET NO. 4 OF 4																		
DRAFT WHERE APPLICABLE MUST REMAIN WITHIN DIMENSIONS			THIS DRAWING CONTAINS INFORMATION THAT IS PROPRIETARY TO MOLEX INCORPORATED AND SHOULD NOT BE USED WITHOUT WRITTEN PERMISSION																	
B3	REV:																			