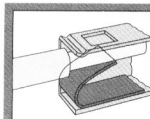


# 2-Conductor PCB Terminal Strips, Series 235, Pin Spacings 5/5.08 mm / 0.2 in; 7.5/7.62 mm / 0.3 in; 10/10.16 mm / 0.4 in Side-entry



**Pin spacing 5/5.08 mm / 0.2 in**  
 2 x 0.25 – 0.75 mm<sup>2</sup> "sol." | 2 x AWG 24–18 "sol."  
 250 V/4 kV/3, 10 A | 300 V, 10 A   
 500 V/4 kV/2, 10 A | 300 V, 10 A

**Pin spacing 7.5/7.62 mm / 0.3 in**  
 2 x 0.25 – 0.75 mm<sup>2</sup> "sol." | 2 x AWG 24–18 "sol."  
 400 V/6 kV/3, 10 A | 300 V, 10 A   
 800 V/6 kV/2, 10 A | 300 V, 10 A

**Pin spacing 10/10.16 mm / 0.4 in**  
 2 x 0.25 – 0.75 mm<sup>2</sup> "sol." | 2 x AWG 24–18 "sol."  
 500 V/4 kV/3, 10 A | 300 V, 10 A   
 1000 V/4 kV/2, 10 A | 300 V, 10 A

9 – 10 mm / 0.37 in

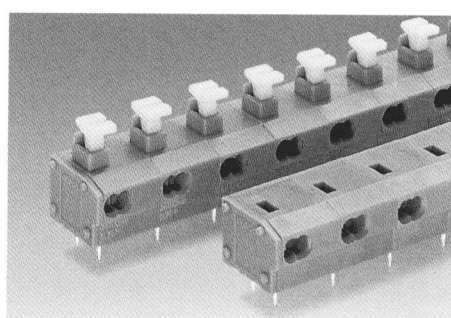
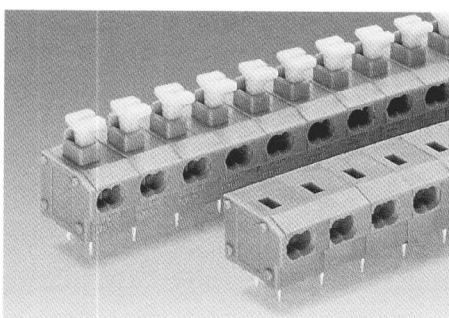
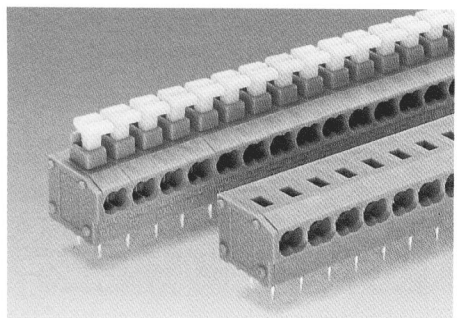
9 – 10 mm / 0.37 in

9 – 10 mm / 0.37 in

\*

\*

\*



No. of poles	Item-No.	Pack.-unit pcs	No. of poles	Item-No.	Pack.-unit pcs	No. of poles	Item-No.	Pack.-unit pcs
<b>2-conductor terminal strips without push buttons, 2 solder pins/pole, grey, standard lengths</b>			<b>2-conductor terminal strips without push buttons, 2 solder pins/pole, grey, standard lengths</b>			<b>2-conductor terminal strips without push buttons, 2 solder pins/pole, grey, standard lengths</b>		
2	<b>235-452</b>	420 (4 x 105)	2	<b>235-552</b>	280 (4 x 70)	2	<b>235-852</b>	220 (4 x 55)
3	<b>235-453</b>	280 (4 x 70)	3	<b>235-553</b>	200 (4 x 50)	3	<b>235-853</b>	160 (4 x 40)
4	<b>235-454</b>	220 (4 x 55)	4	<b>235-554</b>	160 (4 x 40)	4	<b>235-854</b>	120 (4 x 30)
5	<b>235-455</b>	180 (4 x 45)	5	<b>235-555</b>	120 (4 x 30)	5	<b>235-855</b>	80 (4 x 20)
6	<b>235-456</b>	140 (4 x 35)	6	<b>235-556</b>	100 (4 x 25)	6	<b>235-856</b>	80 (4 x 20)
7	<b>235-457</b>	120 (4 x 30)	7	<b>235-557</b>	80 (4 x 20)	7	<b>235-857</b>	60 (4 x 15)
8	<b>235-458</b>	100 (4 x 25)	8	<b>235-558</b>	80 (4 x 20)	8	<b>235-858</b>	60 (4 x 15)
9	<b>235-459</b>	100 (4 x 25)	9	<b>235-559</b>	60 (4 x 15)	9	<b>235-859</b>	40 (4 x 10)
10	<b>235-460</b>	80 (4 x 20)	10	<b>235-560</b>	60 (4 x 15)	10	<b>235-860</b>	40 (4 x 10)
12	<b>235-462</b>	80 (4 x 20)	12	<b>235-562</b>	40 (4 x 10)	12	<b>235-862</b>	40 (4 x 10)
16	<b>235-466</b>	60 (4 x 15)	16	<b>235-566</b>	40 (4 x 10)	16	<b>235-866</b>	20 (4 x 5)
24	<b>235-474</b>	40 (4 x 10)	24	<b>235-574</b>	20 (4 x 5)	24	<b>235-874</b>	20 (4 x 5)
36	<b>235-486</b>	20 (4 x 5)						
48	<b>235-498</b>	20 (4 x 5)						

Additional item-No. for 2-conductor terminal strips with push buttons .../331-000

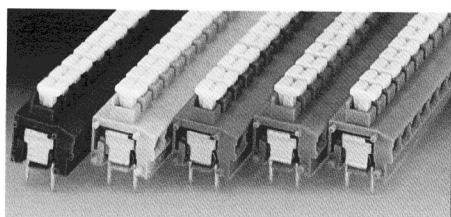
Additional item-No. for 2-conductor terminal strips with push buttons .../331-000

Additional item-No. for 2-conductor terminal strips with push buttons .../331-000

For assemblies in other lengths and colors, please contact factory.

For assemblies in other lengths and colors, please contact factory.

For assemblies in other lengths and colors, please contact factory.



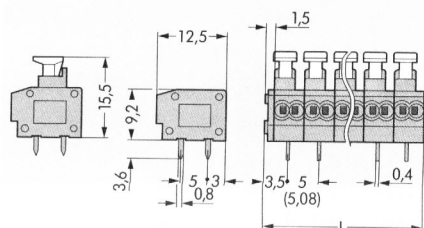
Additional item-Nos. for colored terminal strips  
 blue .../000-006   
 dark grey .../000-008  
 light grey .../000-009  
 orange .../000-012  
 light green .../000-017

With blue insulating housings suitable f. EEx i applic. (only pin spacings 7.5/7.62 mm/0.3 in + 10/10.16 mm/0.4 in)

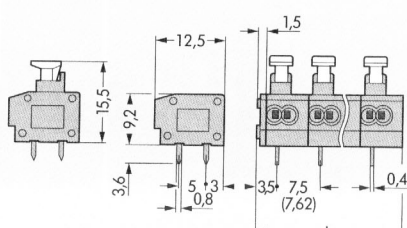
Ordering examples  
 2-conductor terminal strip with push buttons, pin spacing 5/5.08 mm/0.2 in  
 12-pole, orange: **235-462/331-012**

2-conductor terminal strip without push buttons, pin spacing 7.5/7.62 mm/0.3 in  
 16-pole, blue: **235-566/000-006**

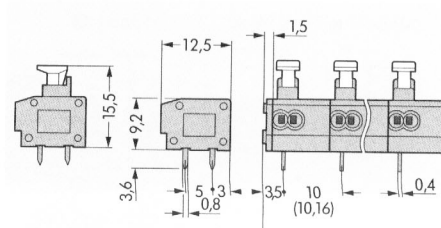
**Dimensions (in mm)** (Adjustment of pin spacing is made by pulling on the end blocks so that they expand to satisfy the hole centers required.)



Diameter of drilled hole: 1<sup>+0.1</sup> mm  
 L = (No. of poles x pin spacing) + 1.5 mm



Diameter of drilled hole: 1<sup>+0.1</sup> mm  
 L = (No. of poles x pin spacing) + 1.5 mm



Diameter of drilled hole: 1<sup>+0.1</sup> mm  
 L = (No. of poles x pin spacing) + 1.5 mm