

P/N	APPLICABLE NOTE(S)	(A) SLOT
-1	1,2,3	.012
-1CC	1,2,3	.012
-1CCSF	1,2,3	.012
-1SF	1,2,3	.012
-2	1,2,3	.018
-2CC	1,2,3	.018
-2CCSF	1,2,3	.018
-2SF	1,2,3	.018
-3	1,2,3	.028
-3CC	1,2,3	.028
-3CCSF	1,2,3	.028
-3SF	1,2,3	.028
-4	1,2,3	.036
-4CC	1,2,3	.036
-4CCSF	1,2,3	.036
-4SF	1,2,3	.036

REVISIONS				
ZONE	REV	DESCRIPTION	DATE	BY
-	-	-	-	-
-	-	-	-	-
-	-	-	-	-

D

D

C

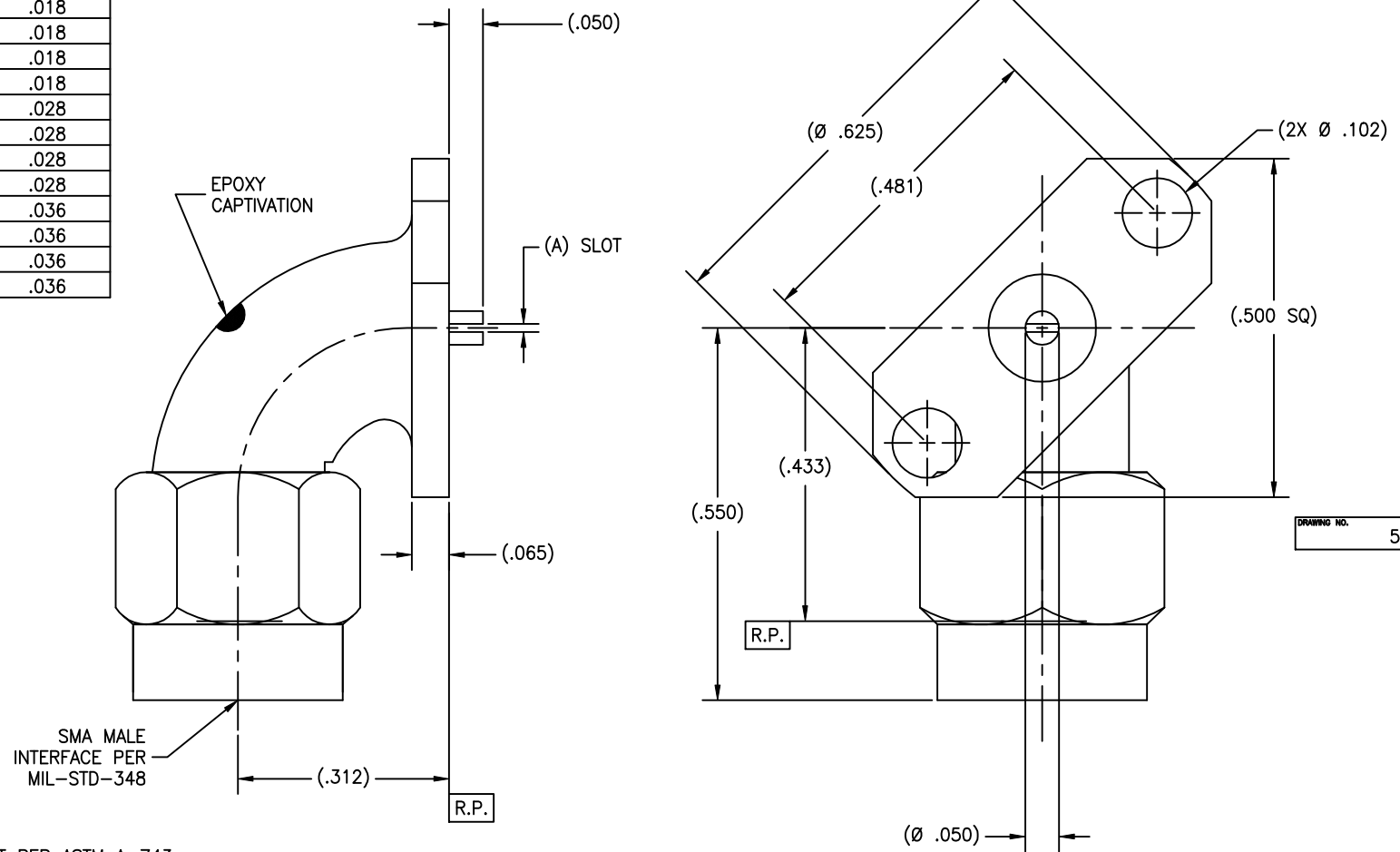
C

B

B

A

A



NOTES(S):

- MATERIAL(S):
 - BODY: 303 SST PER ASTM A-743
 - CENTER CONDUCTOR & RETAINING RING: BeCu ALLOY C173 PER ASTM B-196.
 - INSULATOR: PTFE PER ASTM D-1710.
 - GASKET: SILICONE RUBBER PER ZZ-R-765.
 - EPOXY: SIGMA VF TYPE HV.
 - COUPLING NUT: 303 SST PER ASTM A-582.
- FINISH(ES):
 - BODY & COUPLING NUT: (FOR SF's) PASSIVATED PER ASTM A-967.
(FOR CC's) GOLD PLATE PER ASTM B-488 OVER NICKEL PLATE PER AMS-QQ-N-290.
 - CENTER CONDUCTOR: GOLD PLATE PER ASTM B-488 OVER NICKEL PLATE PER AMS-QQ-N-290.
 - INSULATOR, EPOXY, GASKET & RETAINING RING: NONE
 - CONNECTOR TO BE SHIPPED WITH PROTECTIVE CAP.

NOTICE
THIS DRAWING EMBODIES A CONFIDENTIAL PROPRIETARY DESIGN ORIGINATED BY TENSOLITE COMPANY AND ALL DESIGN, MANUFACTURING, REPRODUCTION, USE AND SALE RIGHTS REGARDING THE SAME ARE EXPRESSLY RESERVED. IT IS SUBMITTED UNDER A CONFIDENTIAL RELATIONSHIP FOR A SPECIFIED PURPOSE AND THE RECIPIENT AGREES BY ACCEPTING THIS DRAWING NOT TO SUPPLY OR DISCLOSE ANY INFORMATION REGARDING IT TO ANY UNAUTHORIZED PERSON TO INCORPORATE IN OTHER PROJECTS ANY SPECIAL FEATURES RELIANT TO THIS DESIGN. ALL PATENT RIGHTS HERETO ARE EXPRESSLY RESERVED BY TENSOLITE COMPANY, LONG BEACH, CALIFORNIA 90815.

TOLERANCES AND NOTES EXCEPT AS NOTED
DIMENSIONS ARE IN INCHES.
LINEAR .01 ± .015
.001 ± .0005 ANGULAR ± 1/2°
FRACTION ± 1/32

- MACHINE FINISH: $\phi 3$ RMS
- BREAK ALL SHARP EDGES .003 MAX.
- MACHINED FILLETS .005 MAX.
- MACHINED SURFACES SQUARE TO RESPECTIVE AXIS WITHIN .005 INCHES PER INCH.
- MACHINED DIAMETERS CONCENTRIC WITHIN .002 T.I.R.
- DIMENSIONS TO BE MET BEFORE PLATING.
- CHAMFER ALL THREADS 45°.
- THREADS PER 10-28
- REMOVE FRAYED EDGES ON TEFLON.
- REMOVE ALL BURRS.

SEE NOTES		-	SEE NOTES	-
MATERIAL		SIZE	SPECIFICATION	PROCUREMENT
NEXT ASSY		Tensolite HIGH PERFORMANCE CABLES & INTERCONNECT SYSTEMS Long Beach, California 90815		
APPROVAL INITIALS	DATE	TITLE SMA MALE RADIUS RIGHT ANGLE 2 HOLE FLANGE (.260 X .625) MOUNT (45° RIGHT) TO HOR. SLOT TERMINATION		
DRAWN BY R.C	03.27.02	SCALE 8/1	SUB-DIRECTORY/FILENAME OL	SHEET 1 OF 1
CHECKED		SIZE C	CAGE CODE 30990	DRAWING NO. 5626
ENGINEERING ATV	06.19.02			REV. -