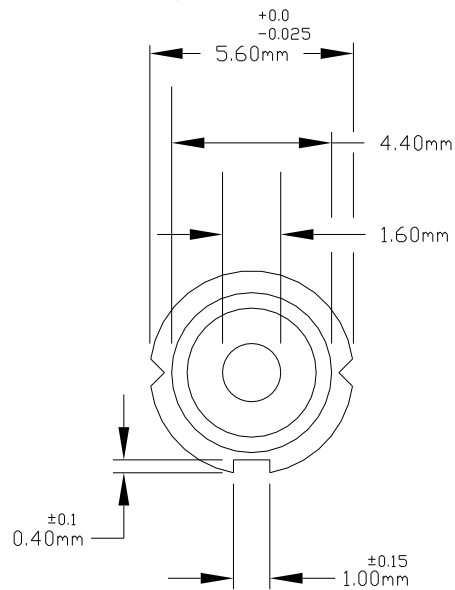
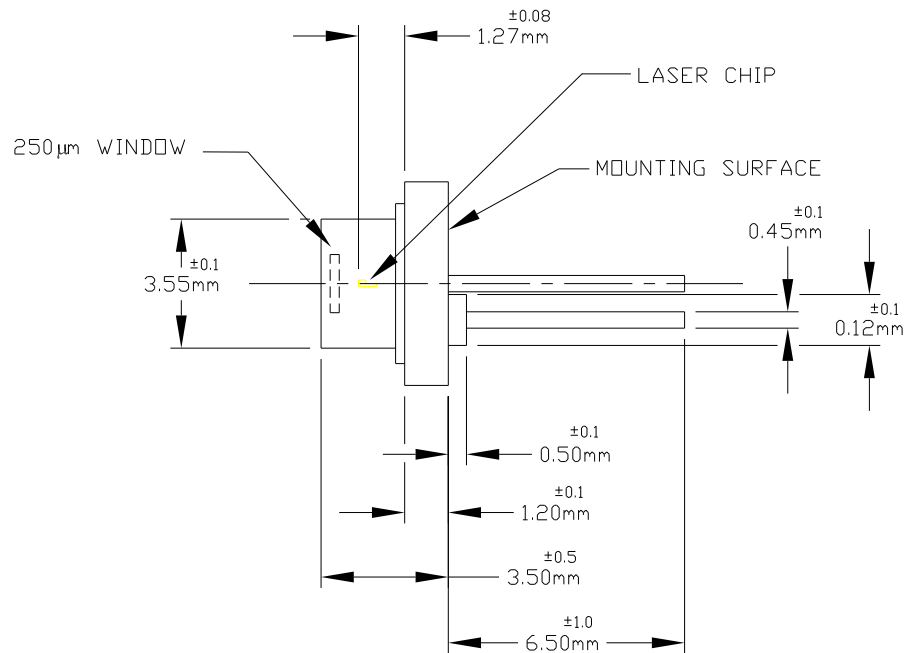


REV.#	DESCRIPTION:	NAME/DATE:
A	INITIAL RELEASE	JCB 11/26/08
B	Changed style D schematic to match catalog	JCB 2/4/09

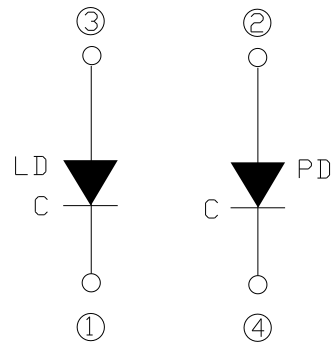
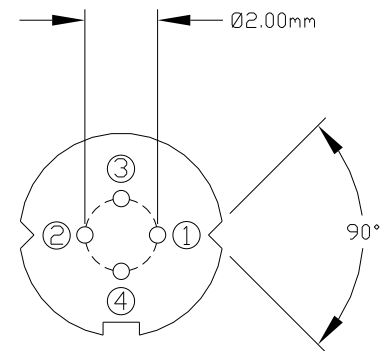
Top View



Side View



Bottom View



INTERNAL CIRCUIT
STYLE D

Model	WaveLength (nm)	Max Output (mW)	Operating Temp. °C	Case (mm)	Style
ML925B45F	1550	6[4]	-10 to +85	5.6	D

Handling and Storage Precautions

Because of their extreme susceptibility to damage from static discharge, care should be taken whenever handling and operating laser diodes.

Wrist Straps
Anti-Static Mats
Storing Lasers

- Use grounded anti-static wrist straps whenever handling lasers.
- Always work on grounded anti-static mats.
- When not in use, short the leads of the laser together to protect against ESD.

SCALE: 2X

THORLABS		PO BOX 366 NEWTON NJ	
TITLE: Mitsubishi 5.6mm LASER DIODE			
TOL: X.XXX=+/-0.005 X.XX=+/-0.010 ANGULAR +/-30°			
SURF. FINISH: 32 MICRINCHES UNLESS OTHERWISE NOTED			
DRAWN JCB	ENGINEER JCB	DATE OF REVIEW 11/26/2008	APPROVED RB
MATERIAL			
DATE 11/26/08	REV B	SIZE A	SHEET 1 OF 1
DWG NO. 15839-E01	PART NO. ML925B45F	WHERE USED ENGINEERING SUPPORT DRAWING	