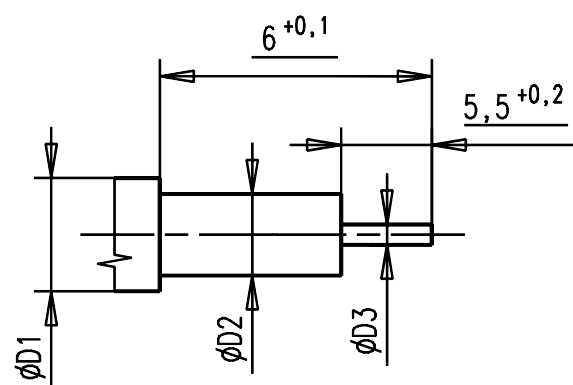
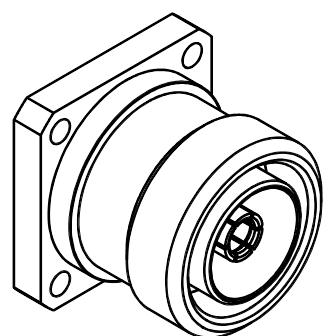


Innenleiter gegen Gehaeuse verdrehgesichert M>15 Ncm/  
hold torque between centerconductor and housing M>15 Ncm.

Verpackung / packaging: 1010307  
Stueckzahl / quantity: 35

M/scale 1:1

Kabelzuschnitt  
Stripping dimension  
Semi-Rigid



Fuer Kabel /  
For cable

Gr.	Type Typ	$\phi D1$ nom.	$\phi D2$ nom.	$\phi D3$ nom.	$\phi D4$ nom.	$\phi D5$	$\phi D6$	$\phi D7$	$\phi D8$	Crimp Aussen/out	Crimp Innen/in
7	UT 141-A-tp	3,58	3,00	0,91						solder	solder
	Sucoform 141 H+S	3,45	2,95	0,92							
	Flexiform 402 Habia	3,60	3,00	0,92							

**IMS** CONNECTOR  
SYSTEMS

general tolerance  
ISO 2768  
mH

scale: 3:1

Assembly instruction: M 141  
Stripping dimension:

nr.	rev.	alteration	date	name
208/02	d	Cable addition	19.03.02	RSc
Design	c	$\phi 5,5 > \phi 5; \phi 7 > \phi 6,5$	15.01.02	RSc
Design	b	Change measure	24.10.01	RSc
Design	a	Change acc. sim.	19.09.01	RSc



**Chassiskabelbuchse**  
**Bulkhead cable jack**

3249.08.2814.27'

Rev.  
d