

ELECTRICAL RATINGS

Impedance: 50 ohms
Frequency Range: 0-4 GHz
Working Voltage: 500 VRMS maximum at sea level.

Dielectric Withstanding Voltage: 1500 VRMS minimum for 1 minute.
Contact Resistance: Center Contact: 1.5 milliohm maximum.
 Outer Contact: 0.2 milliohm maximum.

MECHANICAL RATINGS

Interface Dimensions: MIL-C-39012, Series BNC
Mating: 2 stud bayonet lock coupling per MIL-C-39012.
Cable Attachment: Clamps: Screw-thread nut and braid clamp.
(Braid or Jacket) All Crimps: Hex braid crimp.
Cable Attachment: Crimps: Crimp or solder
(Center Conductor) All Others: Solder only.

Contact Retention: 6 lbs. minimum axial force
 (captivated contacts).
 4 inch-ounce minimum radial torque.

Cable Retention:

	Axial Force** (Pounds)
Connectors For RG 58	30
Connectors For RG 59	40

** Or cable breaking strength whichever is less.

ENVIRONMENTAL RATINGS

Temperature Range: -65°C to +165°C
Shock: MIL-STD-202, Method 202

Corrosion: MIL-STD-202, Method 101, Condition B
Vibration: MIL-STD-202, Method 204 Condition D.

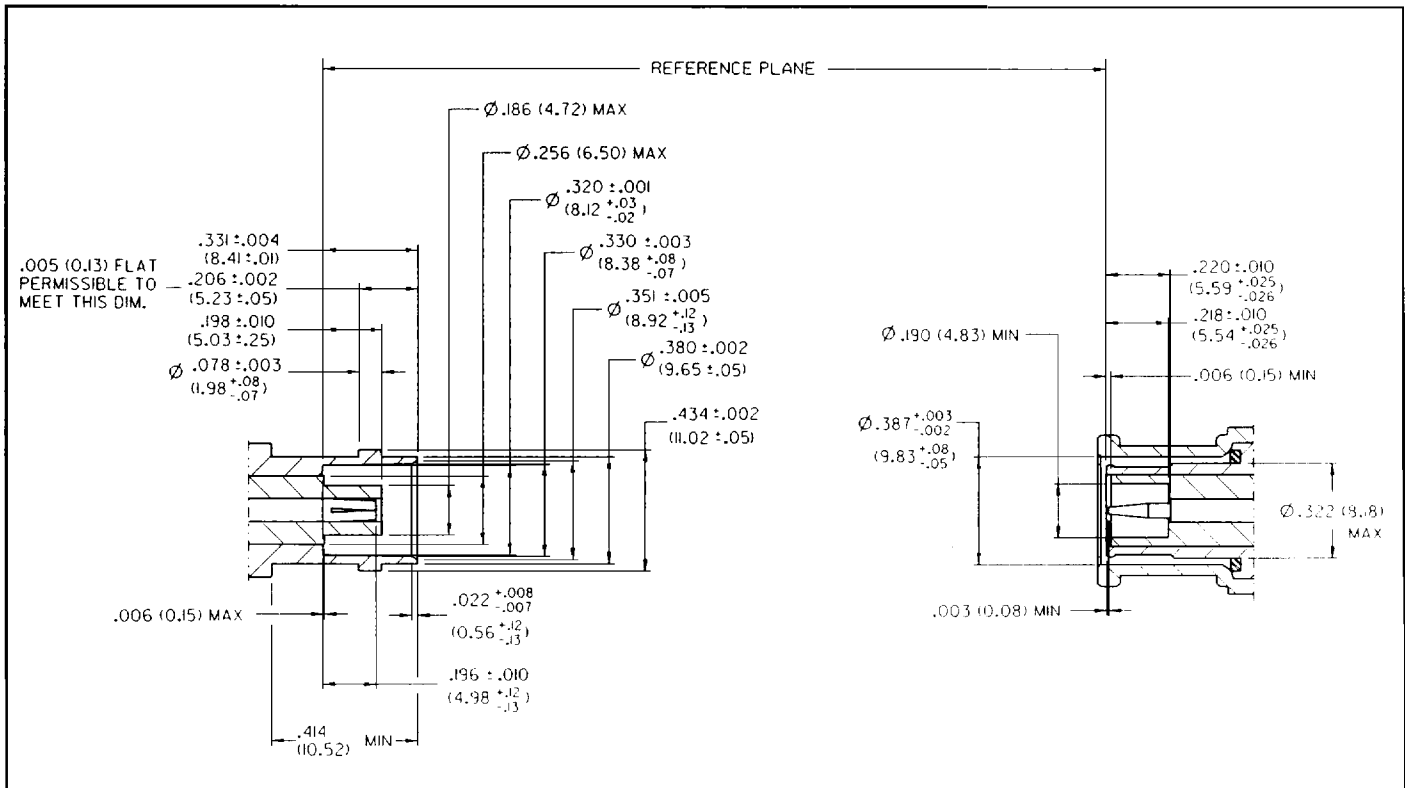
* The ratings listed are typical and may not apply to all connectors.

MATERIAL SPECIFICATIONS

Bodies: Brass, Nickel Plated .0001" Minimum
Clamp Gaskets: Synthetic rubber, silicone rubber.
Mounting Hardware: Brass, Nickel Plated

Center Contact: Male - Brass
 Finish: .0001 minimum silver or .00005 minimum gold
 Female - Phosphor Bronze
 Finish: .0001 minimum silver or .00005 minimum gold

Insulator: TFE Fluorocarbon



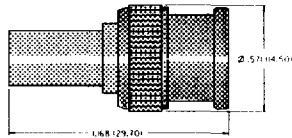
CONNECTOR TYPE

BNC

FOR FLEXIBLE CABLE

E.F. JOHNSON

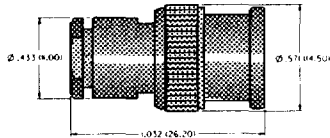
BNC STRAIGHT PLUG-CRIMP



CABLE TYPE	CABLE ATTACHMENT		REFERENCE NUMBER	E.F. JOHNSON NUMBER
	CONTACT	SHIELD		
RG-58	Crimp	Crimp	—	140-3407-006
RG-59	Crimp	Crimp	—	140-3409-006

Assembly Instructions Page 10.

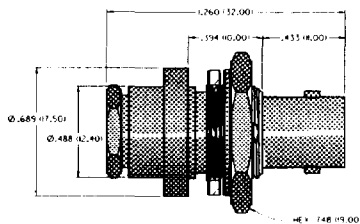
BNC STRAIGHT PLUG-CLAMP



CABLE TYPE	CABLE ATTACHMENT		REFERENCE NUMBER	E.F. JOHNSON NUMBER
	CONTACT	SHIELD		
RG-58	Solder	Clamp	UG-88C/U	140-3207-006
RG-59	Solder	Clamp	UG-260B/U	140-3209-006

Assembly Instructions Page 11.

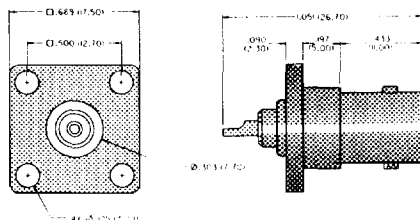
BNC STRAIGHT BULKHEAD JACK



CABLE TYPE	CABLE ATTACHMENT		REFERENCE NUMBER	E.F. JOHNSON NUMBER
	CONTACT	SHIELD		
RG-58	Solder	Clamp	UG-909/U	140-3107-406
RG-59	Solder	Clamp	UG-910/U	140-3109-406

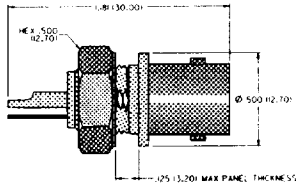
Assembly Instructions Page 10.

BNC PANEL RECEPTACLE



MOUNTING METHOD	TERMINAL TYPE	REFERENCE NUMBER	E.F. JOHNSON NUMBER
4 Hole Flange .125 Dia. Holes	Solder Cup	UG-290A/U	140-3701-606

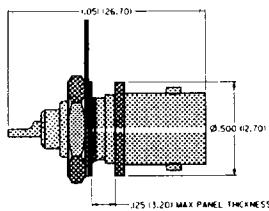
BNC BULKHEAD RECEPTACLE – ISOLATED FROM PANEL



MOUNTING METHOD	TERMINAL TYPE	REFERENCE NUMBER	E.F. JOHNSON NUMBER
Front Mount Isolated From Panel	Solder Cup and Ground Tab	—	140-3701-406

Mounting hole dimensions Figure 1 Page 13.
 Panel Thickness: .125 maximum.
 Insulating Material: ABS.

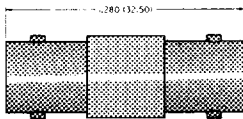
BNC BULKHEAD RECEPTACLE



MOUNTING METHOD	TERMINAL TYPE	REFERENCE NUMBER	E.F. JOHNSON NUMBER
Front Mount .125 Maximum Panel	Solder Cup	UG-1094/U	140-3701-416

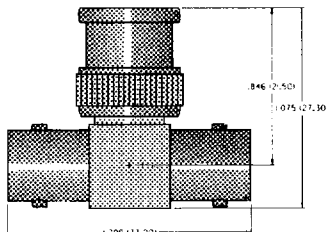
Mounting hole dimensions Figure 2 Page 13.

BNC STRAIGHT ADAPTER JACK/JACK



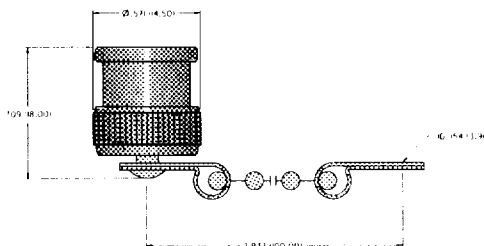
DESCRIPTION	REFERENCE NUMBER	E.F. JOHNSON NUMBER
Straight Adapter Jack/Adapter	UG-914/U	140-3901-806

BNC "T" ADAPTER JACK/PLUG/JACK



DESCRIPTION	REFERENCE NUMBER	E.F. JOHNSON NUMBER
"T" Adapter Jack/Adapter	UG-274A/U	140-3901-906

BNC JACK COVER WITH CHAIN



DESCRIPTION	REFERENCE NUMBER	E.F. JOHNSON NUMBER
Jack Cover With Chain	CW-123	140-3801-806