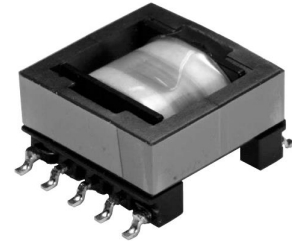


# SMD Transformer / Automotive grade CEEH137



## Feature

- High isolation transformer for IGBT/MOSFET gate drive
- Low profile / Small Floor space
- High power density / High withstand voltage
- Multiple cores available



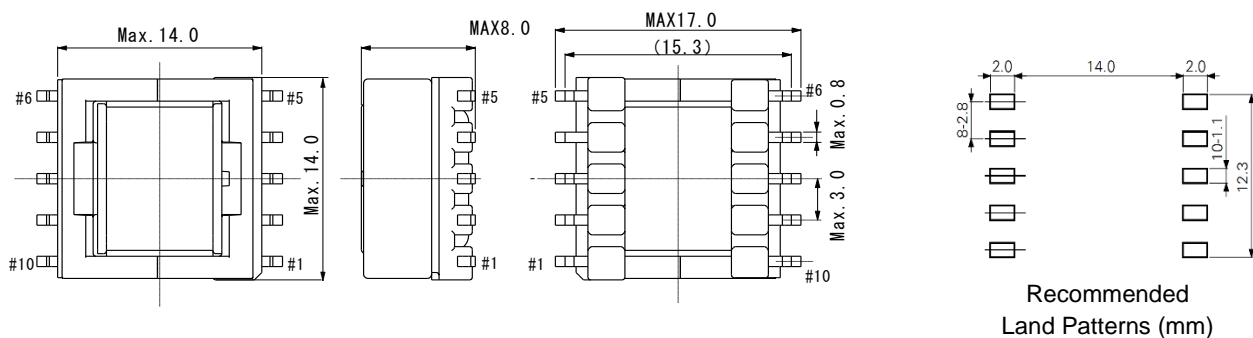
## Application

- AUX power supply for
  - \* Electric compressor / PTC heater in HVAC system
  - \* Traction inverter / OBC / BMS for xEV/EV
  - \* Starter generator in Mild hybrid system
- Commercial / Industrial and Medical equipment

*Custom design Available*

## Dimensions

- Size (L x W x H): 17.0mm x 14.0mm x 8.0mm (Max)
- Number of terminals: 5/5 (Primary/Secondary)



## Electrical characteristic (In general)

- Operating frequency 500 kHz (Max)
- Operating Power 3.0W (@ 100 kHz), 4.8W (@ 250kHz) , 7.8W (@ 400kHz)
- Withstand voltage : 1,500Vrms / 1min (\* Will be designed for your withstand voltage request)
- Operating temperature range : - 40°C~+ 125°C (\*Including coil's self-temperature rise)

## Reliability

- Comply with AEC-Q200
- RoHS 2 Compliance

Note : This specification is subject to change without notice. Please contact your nearest sales office for updated information when placing an order.

# SMD Transformer / Automotive grade CEEH137

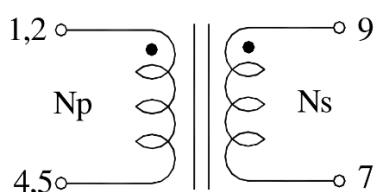


## 【IC reference】

### Power supply for IGBT gate driver / Flyback transformer

- IC manufacture : Analog Devices
- IC part number : EVAL-ADuM4138 (Evaluation board) / ADuM4138
- Sumida part number : 12322-T235

## Schematic of transformer winding



## ELECTRICAL CHARACTERISTICS (AT 25°C UNLESS OTHERWISE SPECIFIED)

ITEM	PIN	SPECIFICATION	MEASURING CONDITIONS
INDUCTANCE	(1,2-4,5)	13μH±10%	100kHz/1V, TIE1+2, 4+5
LEAKAGE INDUCTANCE	(1,2-,4,5)	0.50uH Max. (0.2uH Typ.)	100kHz/1V, TIE 7+9,1+2, 4+5
DCR	(1,2-4,5)	50mΩ Max. (40mΩ Typ.)	
	(7-9)	200mΩ Max. (160MΩ Typ.)	
TURNS RATIO	Np/Ns	1:2	
HI-POT	(Np-Ns1)	2500VDC	1SEC. 1.0Ma
	COIL-CORE	1000VDC	
RATED CURRENT	(1,2-4,5)	2.6ADC	

- \* OPERATING TEMPERATURE RANGE: -40°C~125°C . (INCLUDING TEMPERATURE RISE).
- \* STORAGE TEMPERATURE RANGE: -40°C~125°C.
- \* THE RATED CURRENT APPLIED ON THIS COIL CAUSING ITS INDUCTANCE ROLL OFF 20% (APPR.)

## 【Another IC reference】

- IC manufacture : Analog Devices
- IC part number : LT8302/LT8302-3
- Sumida part number : 12322-T373



For sales office information, please [click here](#) to visit our website.

Note : This specification is subject to change without notice. Please contact your nearest sales office for updated information when placing an order.