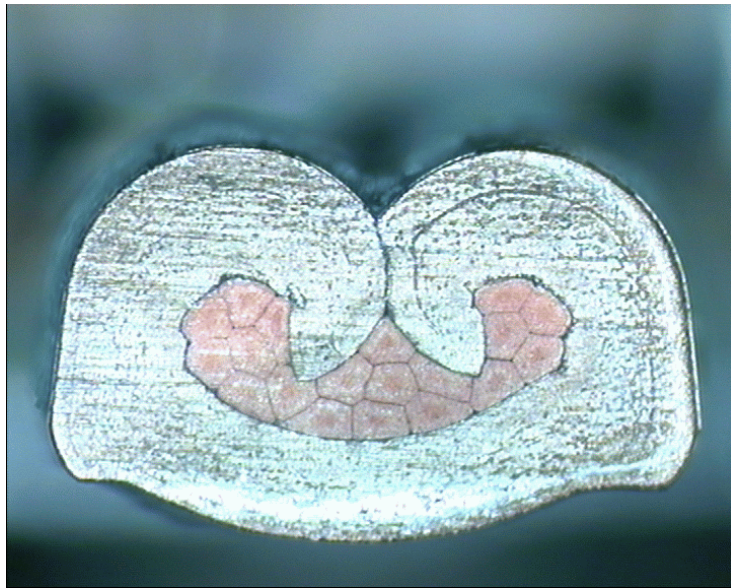




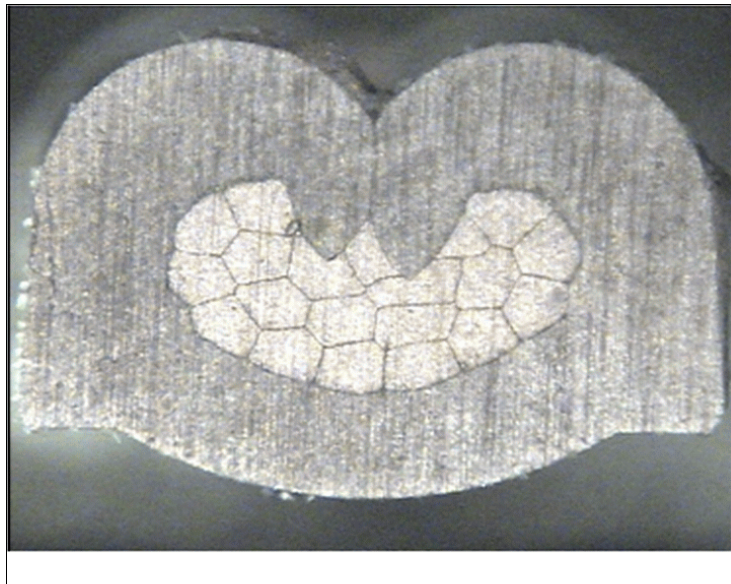
DELPHI PN 12158098



cable:  
 $0,50 \text{ mm}^2 = 19 \times 0,19 \text{ mm}$

crimp height:  
1,35 mm

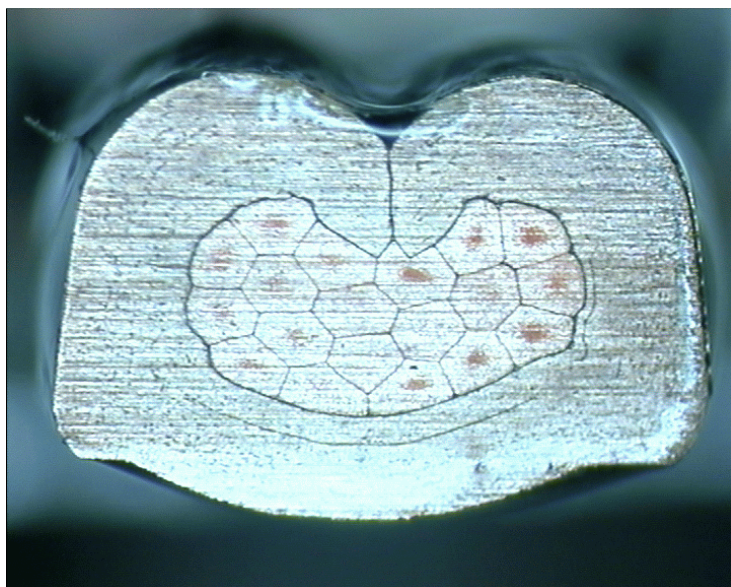
crimp width:  
2,20 mm



cable:  
 $0,75 \text{ mm}^2 = 19 \times 0,23 \text{ mm}$

crimp height:  
1,45 mm

crimp width:  
2,25 mm



cable:  
 $1,00 \text{ mm}^2 = 19 \times 0,26 \text{ mm}$

crimp height:  
1,55 mm

crimp width:  
2,25 mm