

Material :

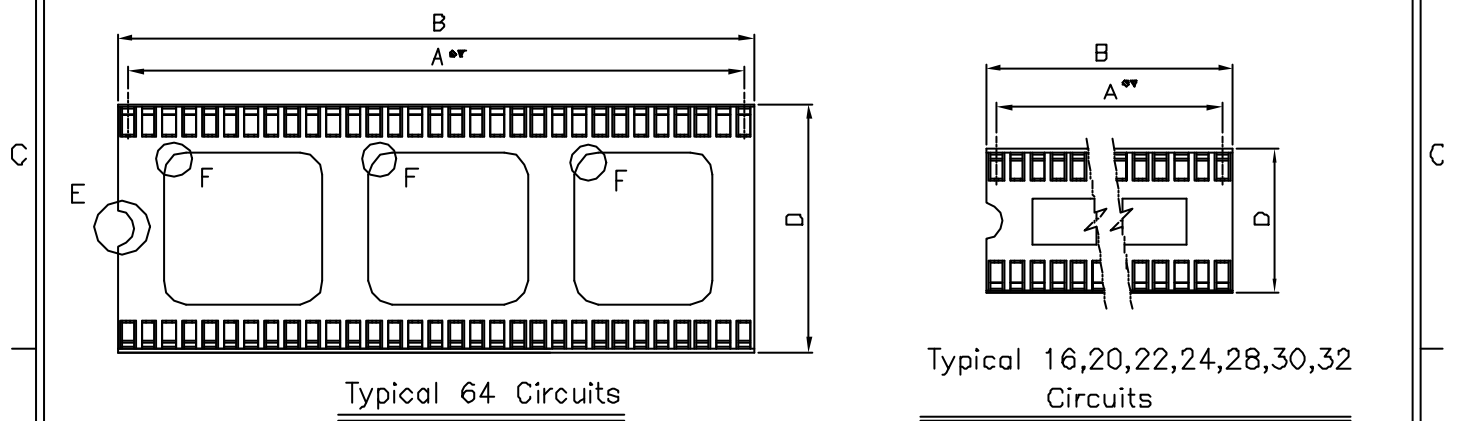
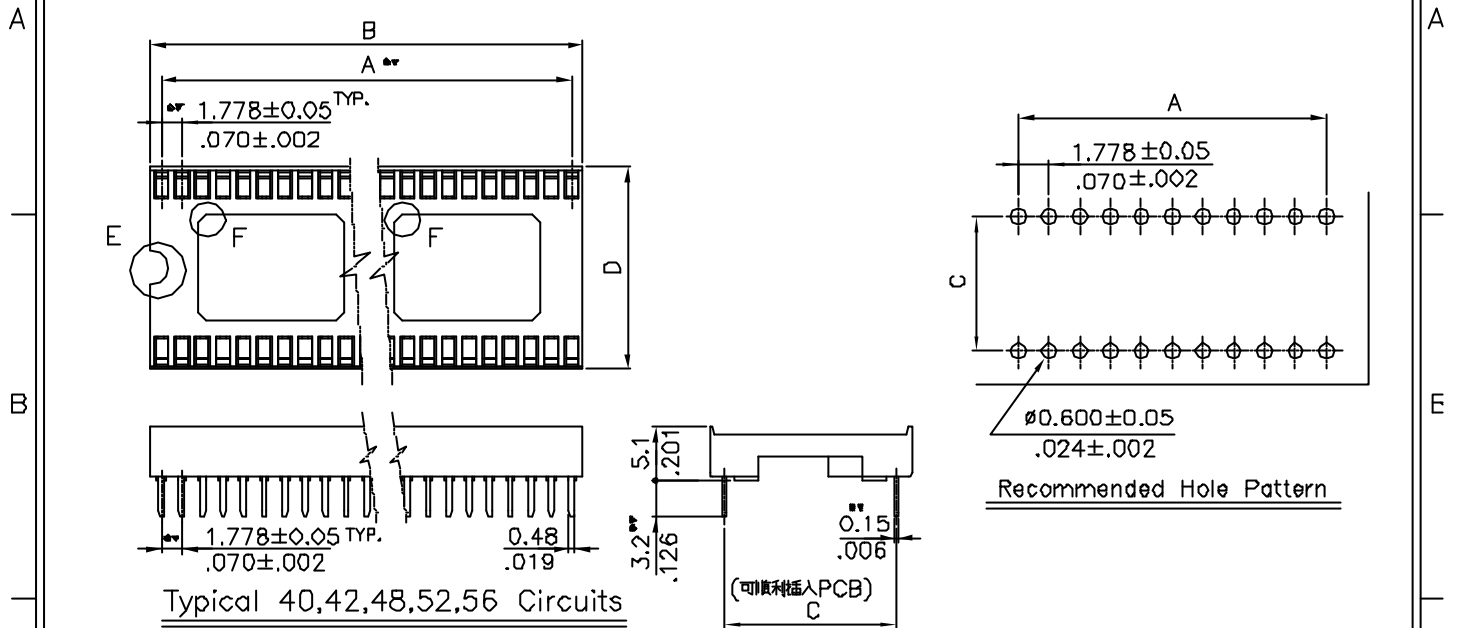
* Insulator : UL 94V-0 PBT

* Contact : Phosphor Bronze

* Plating : Tin Plated 120 μ " min. over 30~50 μ " nickel overall

備註E: 此形狀可為方形, 三角形, 半圓形或梯形等

備註F: 此形狀可為直角或圓角或導角等



Circuits	DimA	DimB	DimC	DimD±0.30
16	12.446(.490)	14.22(.560)	7.620(.300)	10.1(.398)
20	16.002(.630)	17.78(.700)	7.620(.300)	10.1(.398)
22	17.780(.700)	19.55(.770)	7.620(.300)	10.1(.398)
24	19.558(.770)	21.33(.840)	10.160(.400)	12.6(.496)
28	23.114(.910)	24.89(.980)	10.160(.400)	12.6(.496)
30	24.892(.980)	26.67(1.050)	10.160(.400)	12.6(.496)
32	26.670(1.050)	28.45(1.120)	10.160(.400)	12.6(.496)
40	33.782(1.330)	35.56(1.400)	15.240(.600)	17.7(.697)
42	35.560(1.400)	37.34(1.470)	15.240(.600)	17.7(.697)
48	40.894(1.610)	42.67(1.680)	15.240(.600)	17.7(.697)
52	44.450(1.750)	46.22(1.820)	15.240(.600)	17.7(.697)
56	48.006(1.890)	49.78(1.960)	15.240(.600)	17.4(.685)
64	55.118(2.170)	56.90(2.240)	19.050(.750)	21.5(.846)

				LECO CORPORATION		APPROVED BY:		PART NO.:		
				GENERAL TOLERANCE		CHECKED BY:		TITLE:		
				.x ± 0.30 .012		.x' ± 1°		1.778mm(.070") Pitch Dual In Line Ic Socket		
				.xx ± 0.20 .008		.xx' ± 0.5°		DRAWING NO.:		
				.xxx ± 0.10 .004		.xxx' ± 0.1°		830501S		
H	E010053					DRAW BY:		UNITS	SCALE	SIZE
G	E970315							mm/inch	1/5	A4
REV.	ECO. NO.	CHG	APPD.					SHEET	1/1	REV.
								H		