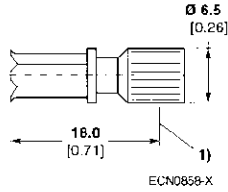


**Series 1.0/2.3, 50 Ohm**

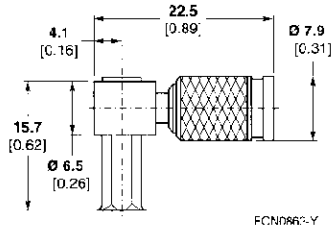
**Plugs, Solder/Crimp**



1) Detent for jack

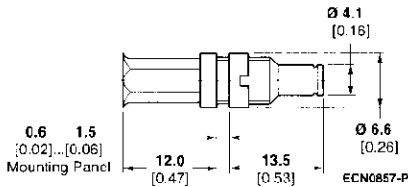
Cable	Coupling Type	Ø Max.	Part No.
RG 316	A	2.67 0.105	1393670-1

**Right Angle Plug, Solder/Crimp**



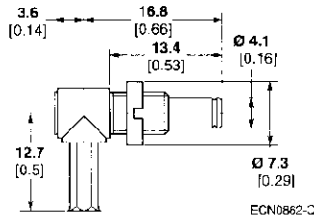
Cable	Coupling Type	Ø Max.	Part No.
RG 316	F	2.6 0.10	2-1393670-6

**Bulkhead Jack, Solder/Crimp**



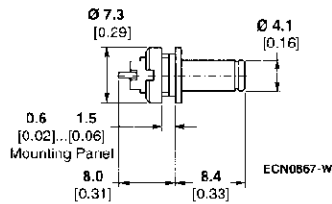
Cable	Coupling Type	Ø Max.	Part No.
RG 316	A, F	2.6 0.10	4-1393670-4

**Right Angle Bulkhead Jack, Solder/Crimp**



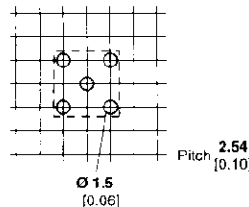
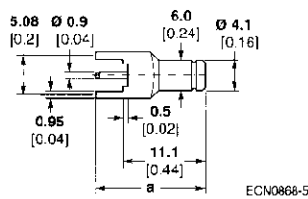
Cable	Coupling Type	Ø Max.	Part No.
RG 316	A, F	2.6 0.10	3-1393670-2

**Bulkhead Solder Jack**



Coupling Type	Part No.
C, F	1393670-8

**Vertical PC Board Mount Jack**



Coupling Type	Dim a	Part No.
C, F	14.6 0.57	3-1393670-4
C, F	15.6 0.61	3-1393670-5

Recommended Mounting Holes