

2385-0013

NOTES:

1. **MATING:** Interface Dimensions per Mil-C-39012 SMB Series & Solitron/Microwave MD-121.

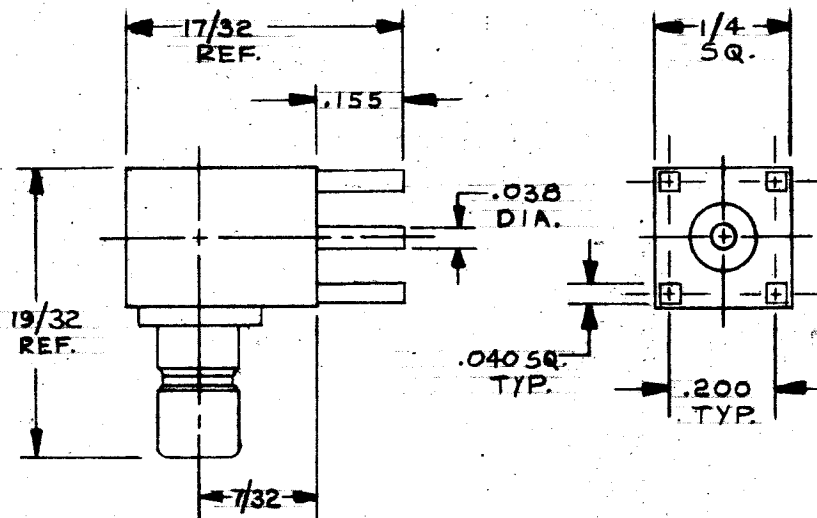
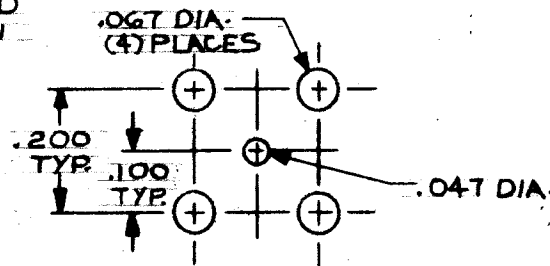
2. **MATERIALS:**

ALL METAL PARTS..Brass per QQ-B-626, 1/2 H., Alloy 360.
 INSULATOR.....Teflon per AMS-3659B, Mil-P-19468 & L-P-403, Type 1.

3. **FINISH:**

ALL METAL PARTS
 EXCEPT CONTACTS..Gold per Mil-G-45204, Type II, Grade C, Class 1; over Copper per Mil-G-14550, Class 4.
 CONTACTS.....Gold per Mil-G-45204, Type I, Grade C, Class 1; over Copper per Mil-C-14550, Class 4.

RECOMMENDED HOLE PATTERN



SYM	DESCRIPTION	DATE	APPR	UNLESS OTHERWISE SPECIFIED 1. ALL DIMENSIONS ARE AFTER PLATING 2. BREAK ALL CORNERS & EDGES .005 R MAX. 3. CHAMFER 1ST & LAST THREADS 45° 4. SURFACE ROUGHNESS 63 MIL STD 19 5. DIAMETERS ON COMMON CENTERS TO BE CONCENTRIC WITHIN .005 T.I.R. 6. REMOVE ALL BURRS	SOLITRON/MICROWAVE		REF.	ENGINEERING
	REL DCN F 10548	9/86	ND		PORT SALERNO, FLORIDA		DATA DRAWING	
				DIMENSIONS ARE IN INCHES TOLERANCES DECIMALS FRACTIONAL ANGULAR .X ± .030 X' ± 1'0" .XX ± .015 ± 1/64 X'X' ± 15" .XXX ± .005		MATERIAL	TITLE	
				DRAWN JR. G. DATE 9-13-86		SEE NOTE 2	SMB	
				CHECKED [Signature] DATE 9-16-86		SEE NOTE 3	RIGHT ANGLE	
				APPROVED [Signature] DATE 9-18-86		SCALE	CODE IDENT NO.	DRAWING NO.
							95077	SHEET 1 OF 2
						SIZE	A	2385-0013

ENG. FILE COPY

S/M DESIGN STANDARDS

DRAWING NO.

2385-0013

REQUIREMENTS	RATINGS	REQUIREMENTS	RATINGS
Nominal Impedance (ohms)	50	Vibration	MIL-STD-202 Method 204 Cond. D (20G's)
Frequency Range (ghz)	DC - 4.0	Shock	MIL-STD-202 Method 213 Cond. I (100G's)
Voltage Rating (max. vrms)	335	Temperature Cycling	MIL-STD-202 Method 107 - Cond. B (-65°C to + 200 ° C)
Temperature Rating (degrees centigrade)	-65° to + 165°	Corrosion	MIL-STD-202 Method 101 Cond. B (48 Hrs.)
VSWR (max.)	N/A xFGHZ	Moisture Resistance	MIL-STD-202 Method 106 Less Step 7b
Insertion Loss (dB max.)	N/A $x\sqrt{FGHZ}$	Barometric Pressure (Altitude)	MIL-STD-202 Method 105 - Cond. C (70,000 ft) (250 vrms)
RF Leakage (min. dB down)	N/A dB-FGHZ		
RF High Potential (max. vrms)	670 at 5MHZ		
Dielectric Withstanding Voltage (max. vrms)	1000		
Insulation Resistance (min. megohms)	5000		
Contact Resistance: Center Contact (max. milliohms) Outer Contact (max. milliohms)	6.0 1.0		
Center Contact Axial Forces: Insertion (max. ounces) Withdrawal (min. ounces)	N/A		
Connector Durability (min. cycles)	500		
Connector Engagement & Disengagement (max. inch lbs.)	14.0		
		CAPTIVATION: Center Contact Min. Axial Force	6.0 lbs.

REMARKS: 1) Recommended Mating Torque: N/A

TITLE: SMB RIGHT ANGLE
RECEPTACLE JACK.

SOLITRON/MICROWAVE
PORT SALERNO, FLORIDA

SHT. 2 of 2

DRAWING NO.
2385-0013

REV.
-