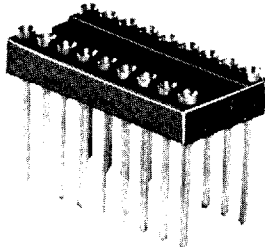
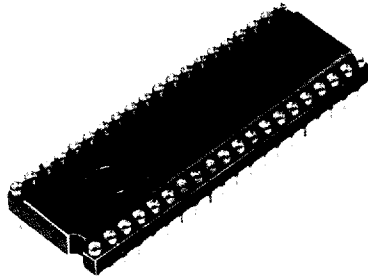


# LO-PRO® file Sockets

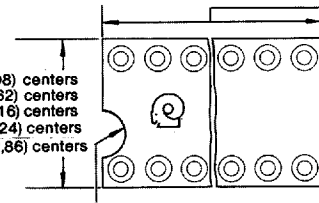
P.O. Box 130, Frenchtown, NJ 08825  
 Phone 1-908-996-6841  
 FAX 1-908-996-3891



A-23-05



.300 (7,62) for .200 (5,08) centers  
 .400 (10,16) for .300 (7,62) centers  
 .500 (12,70) for .400 (10,16) centers  
 .700 (17,78) for .600 (15,24) centers  
 1.000 (25,40) for .900 (22,86) centers

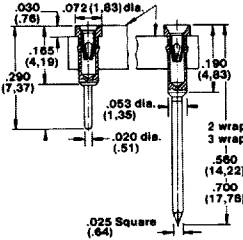


Polarization Notch: Pin 1 Identification

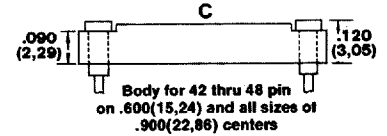
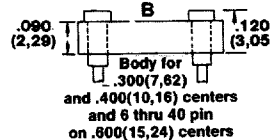
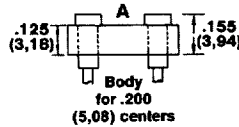
- .30 (7,62) for 6 pin
- .40 (10,16) for 8 pin \*
- .70 (17,78) for 14 pin
- .80 (20,32) for 16 pin
- .90 (22,86) for 18 pin
- 1.00 (25,40) for 20 pin
- 1.10 (27,94) for 22 pin
- 1.20 (30,48) for 24 pin
- 1.40 (35,56) for 28 pin
- 1.60 (40,64) for 32 pin
- 1.80 (45,72) for 36 pin
- 2.00 (50,80) for 40 pin
- 2.40 (60,96) for 48 pin
- 3.20 (81,28) for 64 pin

\* .430 for .200 centers

See sketches A, B and C for body style and dimensions.



Note: All LO-PROfile collet sockets are available in any increment of 2 up to 48 pins on .300 (7,62), 2 to 22 pins on .400 (10,16), 2 up to 48 pins on .600 (15,24), and 2 up to 64 pins on .900 (22,86). To order use any number of pins wanted as first two digits of Catalog No.

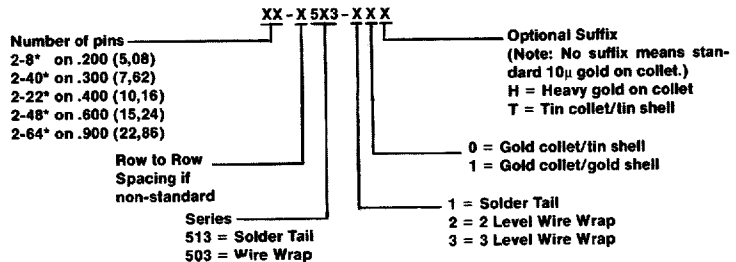


### SPECIFICATIONS

- Collet accepts: .015-.022 (.38-.56) dia. round leads
- Contacts: Collet- Beryllium copper  
 Body- Brass
- \* Plating: Tin collet/tin shell, gold collet/tin shell and gold collet/gold shell are all available. See page 4 for details.
- Platform Material: Glass filled thermoplastic.

### HOW TO ORDER

See Complete Plating Specifications on page 4.



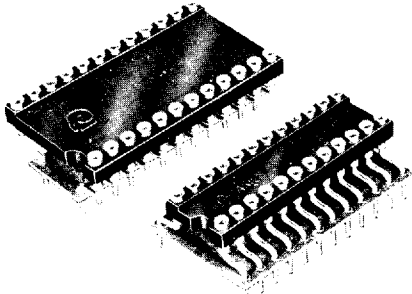
\* Any even number between these numbers is available.

Note: Consult factory for Part No.'s and availability of low insertion force collet sockets.

## LO-PRO® file SERIES 513

Collet Contacts  
 SERIES 513 (Solder Tail)  
 SERIES 503 (Wire Wrap)

- 2 thru 8 pins on .200 (5,08) centers
- 2 thru 40 pins on .300 (7,62) centers
- 2 thru 22 pins on .400 (10,16) centers
- 2 thru 48 pins on .600 (15,24) centers
- 2 thru 64 pins on .900 (22,86) centers

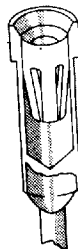


## ADAPTOR SOCKETS

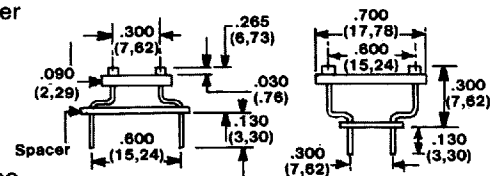
- 6 thru 40 pins .300 (7,62) to .600 (15,24)
- 6 thru 48 pins .600 (15,24) to .300 (7,62)

ADAPTOR SOCKETS allow the use of .300 (7,62) center devices when the PCB is drilled on .600 (15,24) centers and vice-versa, giving the flexibility of using .600 (15,24) or .300 (7,62) center devices in the same application. Part number 1106396-XX accepts devices on .300 (7,62) centers and solders into board on .600 (15,24) centers. Part number 1107254-XX accepts devices on .600 (15,24) centers and solders into board on .300 (7,62) centers.

High reliability collet contacts in glass filled thermoplastic platform assure maximum electrical characteristics.



### Specifications (see above)



Part No. 1106396-XX  
 6 thru 40 pins in increments of 2  
 XX = number of pins

Part No. 1107254  
 6 thru 48 pins in increments of 2  
 XX = number of pins

Other configurations available. Consult factory