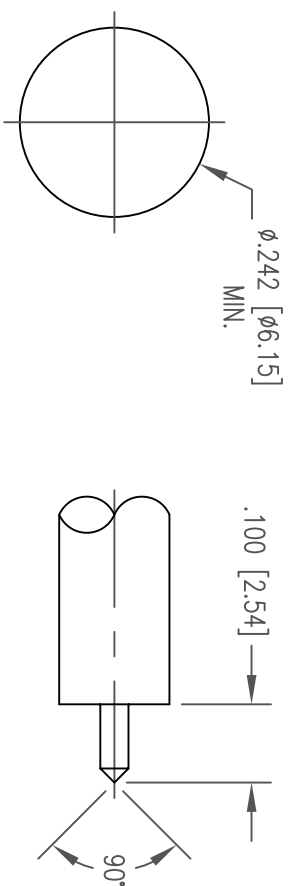
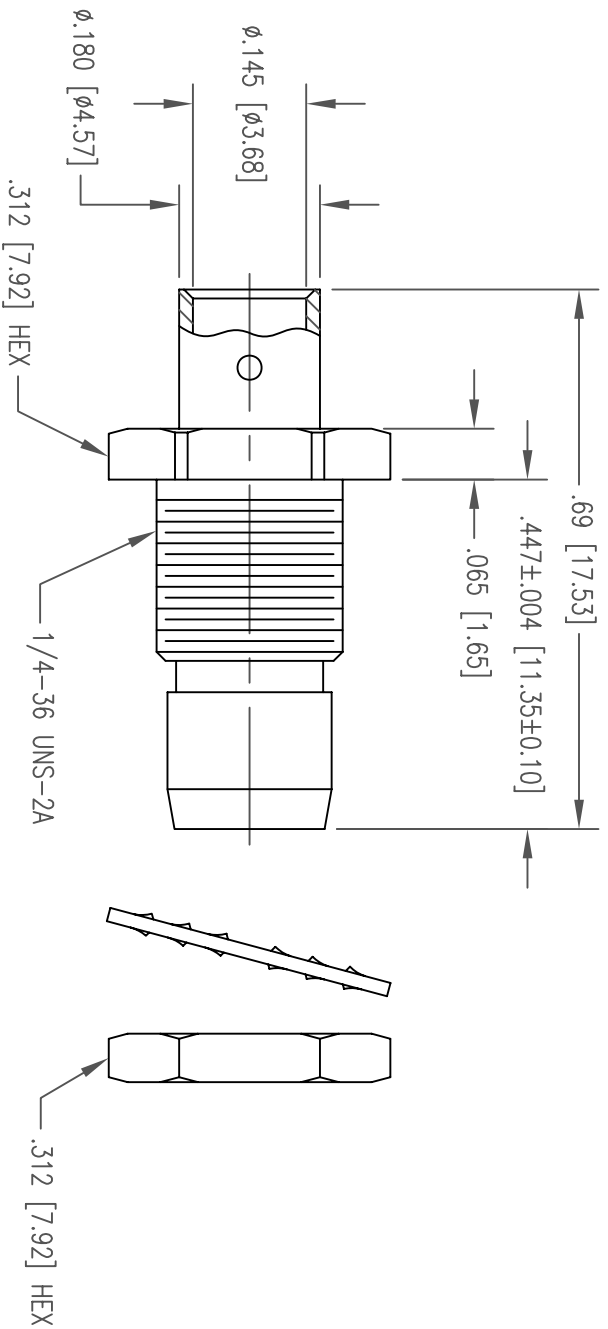


REV	DESCRIPTION	DATE	APPD
1	NPR 2779	2/8/02	JED



RECOMMENDED MOUNTING HOLE

CABLE TRIMMING DIMENSIONS

NOTES:

1. MATERIALS:

- CENTER CONTACT: COPPER ALLOY
- LOCKWASHER: PHOSPHOR BRONZE PER ASTM B103
- BODY AND NUT: BRASS PER ASTM B16
- INSULATOR: TEFLON PER ASTM D1710

2. FINISH:

- CENTER CONTACT: .000030 MIN. GOLD PER MIL-G-45204 OVER
- .000050 MIN. NICKEL PER QQ-N-290

ALL OTHER METAL PARTS: TRI-METAL PLATE

- 3. FOR USE WITH .141 DIA. SEMI-RIGID CABLE OR EQUIVALENT.
- 4. FOR CABLING PROCEDURES USE CAP 5-24 WITH TRIMMING DIMENSIONS SHOWN.

PER ASME Y14.5M-1994 UNLESS OTHERWISE SPECIFIED: TOLERANCES: DECIMALS .XX ± .01 [0.254] ANGLES ± Z° .XXX ± .005 [0.127]		SCALE: 4:1	
CUSTOMER DRAWING		TITLE	
DRAWN JED	DATE 2/8/02	CHECKED	DATE
APPROVED	DATE	APPROVED	DATE
BMA STRAIGHT BULKHEAD PLUG		WINCHESTER ELECTRONICS 400 Park Road Watertown, CT 06795	
A	360-574-1411R	SFT.	OF
1	1	1	1