

0.375" Pitch, NC6 Series, Low Profile

PHYSICAL PROPERTIES

HOUSING MATERIAL: Thermoplastic polyamide
FLAMMABILITY: UL94V-0
COLOR: Black

TERMINAL

TERMINALS: Bright acid tin over copper alloy
SCREWS: #6-32 steel, zinc plating with clear chromate coating. Wire clamping screw standard.

MECHANICAL

PITCH (TERMINAL SPACING): .375"
SCREW SIZE: #6-32 steel
RECOMMENDED PCB HOLE DIA.: .073" dia.

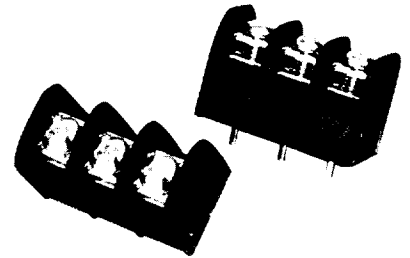
ELECTRICAL PROPERTIES

MAXIMUM CURRENT: 20A
OPERATING VOLTAGE: 300V
WIRE RANGE: 12-22 AWG

ENVIRONMENTAL PROPERTIES

OPERATING TEMPERATURE RANGE: 105°C max.

Note: Before ordering, see Cross Reference in Section 15 for equivalent Tyco Electronics Part Number.



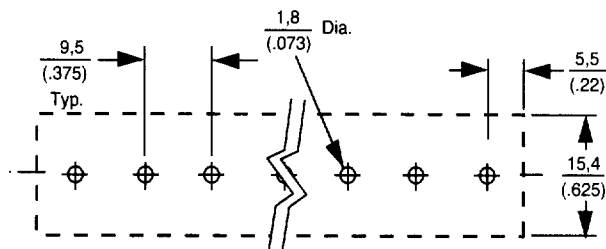
NC6-P108-03

ORDERING INFORMATION

NC6 - P 1 08- 04

A B C D E

- A Series**
NC6 = Dual-Barrier, 0.375" Centers, Low Profile
- B Terminal Style**
P = Printed Circuit Pin
- C Block Style**
1 = Flat, all positions filled
2 = End mounting holes provided
- D Screw Hardware**
02 = Brass clamp-plate slotted head screws
04 = Steel clamp-plate slotted head screws
05 = Steel slotted binding head screws
07 = Steel binding combo head screws
08 = Steel clamp-plate combo head screws
- E No. of Circuits (Not positions)**
02 through 30

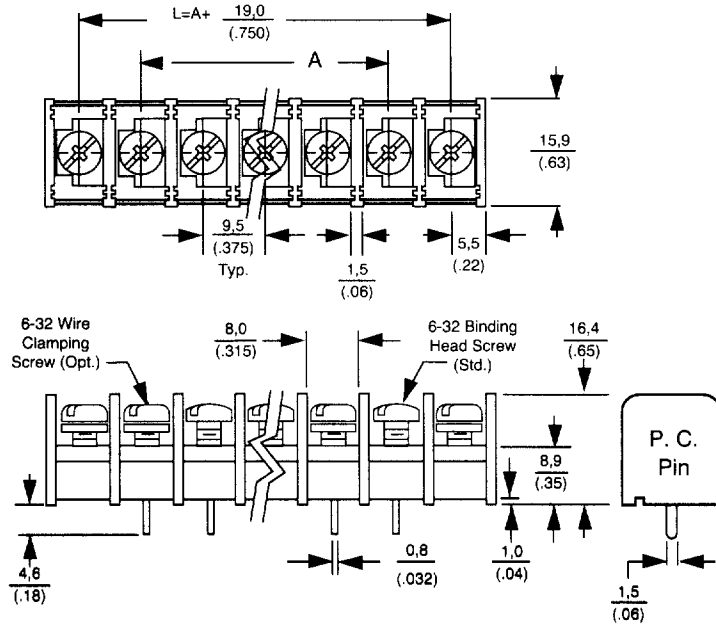


RECOMMENDED HOLE LAYOUT

For complete product information, order Catalog 1308389



0.375" Pitch, NC6 Series, Low Profile



For complete product information, order Catalog 1308389