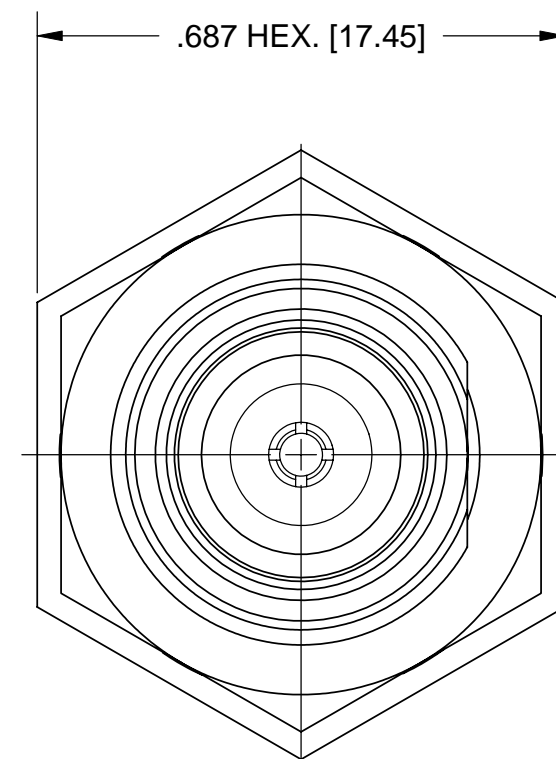
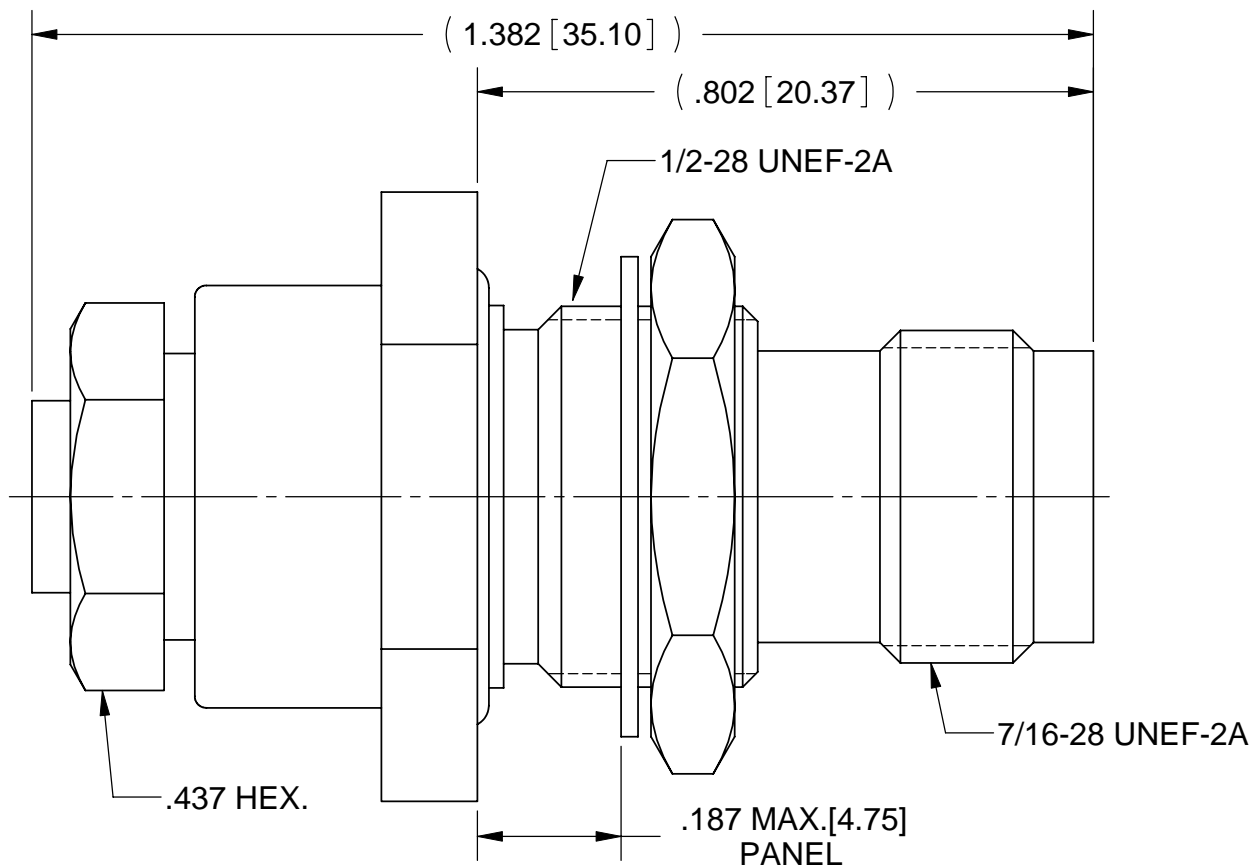


REVISION HISTORY			
REV	DESCRIPTION	DATE	APPROVED
-	DCN 36569	03/09	STW

# PRODUCT DATA DRAWING



**MATERIAL:**

BODY, LOCK WASHER,  
HEX NUT &  
CLAMP NUT:

STAINLESS STEEL PER AMS-5640,  
ALLOY UNS S30300, TYPE 1

CONTACT:

BERYLLIUM COPPER PER ASTM B196,  
ALLOY No. UNS C17300, TD04

FERRULE:

BRASS PER ASTM B16, ALLOY UNS No. C36000

INSULATORS:

PTFE PER ASTM D1710, TYPE I, GRADE 1, CLASS B

GASKET &  
"O" RINGS:

SILICONE RUBBER PER A-A-59588,  
CLASS 2B, GRADE 50/60

CRIMP RING:

COPPER PER ASTM B301, ALLOY UNS C18700, H04

**FINISH:**

BODY, CLAMP NUT,  
HEX NUT &  
LOCK WASHER:

PASSIVATED PER AMS-2700.

CONTACT &  
CRIMP RING:

GOLD PER ASTM B488, TYPE II,  
CODE C, CLASS 1.27, OVER NICKEL  
PER AMS-QQ-N-290, CLASS 1, .00005" MIN.

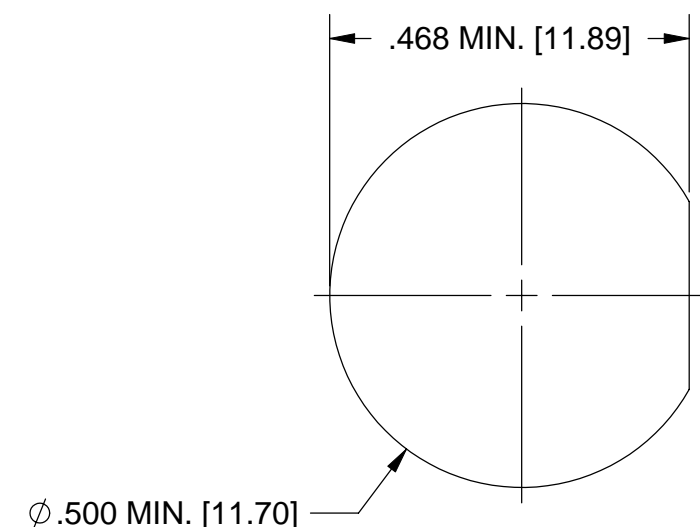
FERRULE:

NICKEL PER AMS-QQ-N-290, CLASS 1,  
GRADE G

**PERFORMANCE:**

IMPEDANCE: 50 OHMS  
FREQ. RANGE: DC TO 15.0 GHz  
DWV: 1500 VRMS  
OPERATING TEMP.: -65° TO +165 °C

**RECOMMENDED MOUNTING HOLE**



MATERIAL: SEE NOTES	DIMENSIONS ARE IN INCHES TOLERANCES: FRACTIONAL: ±1/64 ANGULAR: X° ±1'0" X°X' ±15'	UNLESS OTHERWISE SPECIFIED 1) ALL DIMENSIONS ARE IN INCHES (MILLIMETERS) 2) ALL DIMENSIONS ARE AFTER PLATING. 3) BREAK CORNERS & EDGES .005 R. MAX. 4) CHAM. 1ST & LAST THREADS. 5) SURFACE ROUGHNESS 63-MIL-STD-10. 6) DIA.'S ON COMMON CENTERS TO BE CONCENTRIC WITHIN .005 T.I.R. 7) REMOVE ALL BURRS	<b>SV Microwave, Inc.</b> 2400 Centrepark West Drive, Suite 100 West Palm Beach, FL 33409
FINISH: SEE NOTES	DECIMAL: .X ±.030 .XX ±.010 .XXX ±.005	INTERPRET DIMENSIONS AND TOLERANCES PER ASME Y14.5M - 1994	TITLE: PTNC STRAIGHT JACK CRIMP CLAMP FOR RG-142, 223, 400 CABLE
SURFACE AREA: N/A	THIRD ANGLE PROJECTION	DRAWN: HLP 03/13/09	SIZE: B CAGE CODE: 95077 DWG. NO. SF4545-6015
PROPRIETARY THE INFORMATION CONTAINED IN THIS DRAWING IS THE SOLE PROPERTY OF SV MICROWAVE, INC. ANY REPRODUCTION IN PART OR AS A WHOLE WITHOUT THE WRITTEN PERMISSION OF SV MICROWAVE, INC IS PROHIBITED.		CHECKED: STW 03/13/09	SCALE: 4:1
		APPROVED: STW 03/13/09	SHEET 1 OF 1