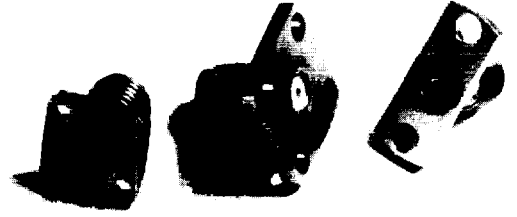
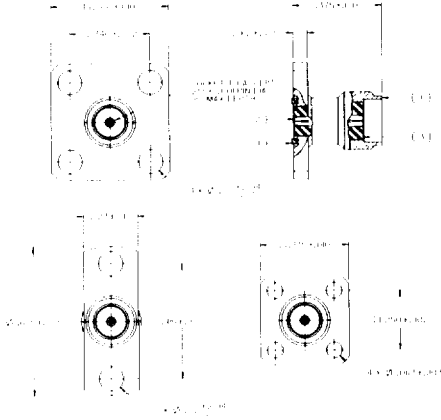


142-1701-511 142-1701-516
 142-1701-561 142-1701-566
 142-1701-611 142-1701-616

Field Replaceable SMA Jack



- Mechanically Captivated
- Low RF Leakage
- Mates with .015" Diameter Pin

Part Number	Flange Style	Item 1 Body	Item 2 Contact	Item 3 Insulator	Item 4 EMI Gasket
142-1701-511	4 Hole X .500	Brass Gold pl .00001 min. over Nickel pl .00005 min. over Copper pl .00005 min	Beryllium Copper Gold pl .00005 min. over Nickel pl .00005 min. over Copper pl .00005 min	Teflon	Conductive Silicone per Mil-G-83528, Type M
142-1701-516	4 Hole X .500	Brass Nickel pl .00010 min. over Copper pl .00005 min	Beryllium Copper Gold pl .00005 min. over Nickel pl .00005 min. over Copper pl .00005 min	Teflon	Conductive Silicone per Mil-G-83528, Type M
142-1701-561	4 Hole X .375	Gold plated Brass	Gold plated Beryllium Copper	Teflon	Conductive Silicone
142-1701-566	4 Hole X .375	Nickel plated Brass	Gold plated Beryllium Copper	Teflon	Conductive Silicone
142-1701-611	2 Hole X .223	Gold plated Brass	Gold plated Beryllium Copper	Teflon	Conductive Silicone
142-1701-616	2 Hole X .223	Nickel plated Brass	Gold plated Beryllium Copper	Teflon	Conductive Silicone

Electrical:

Impedance: 50 Ohms
 Frequency Range: 0-26.5 GHz
 VSWR: Dependent upon application, typically <1.1 + .01F (F in GHz) - see plot
 Working Voltage: 335 Vrms max at sea level
 Dielectric Withstanding Voltage: 1000 Vrms min at sea level
 Insulated Resistance: 5000 Megohm min
 Contact Resistance:

Center Contact - Initial 6.0 milliohm max, after environmental 8.0 milliohm max
 Outer Conductor - Initial 2.0 milliohm max

Corona level: 250 volts min at 70,000 feet
 Insertion loss: Dependent upon application, typically < .03 \sqrt{F} dB (F in GHz)
 RF Leakage: -90 dB min at 2.5 GHz
 RF High Potential Withstanding Voltage: 670 VRMS min at 4 and 7 MHz

Mechanical:

Engage/Disengage Torque: 2 inch-pounds max
 Mating Torque: 7-10 inch-pounds
 Contact Retention: 6 lbs min axial force
 Durability: 500 cycles min

Environmental:

(Meets or exceeds the applicable paragraph of MIL-C-39012)
 Thermal Shock: MIL-STD-202, Method 107, Condition B
 Operating Temperature: -65° C to 165° C
 Corrosion: MIL-STD-202, Method 101, Condition B
 Shock: MIL-STD-202, Method 213, Condition I
 Vibration: MIL-STD-202, Method 204, Condition D
 Moisture Resistance: MIL-STD-202, Method 106

TYPICAL RETURN LOSS
 (142-1701-511,516,561,566,611,616)

