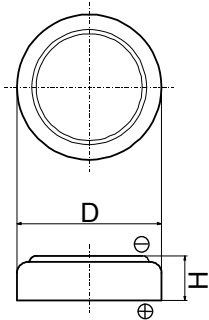


Cell Type TL421 Specifications

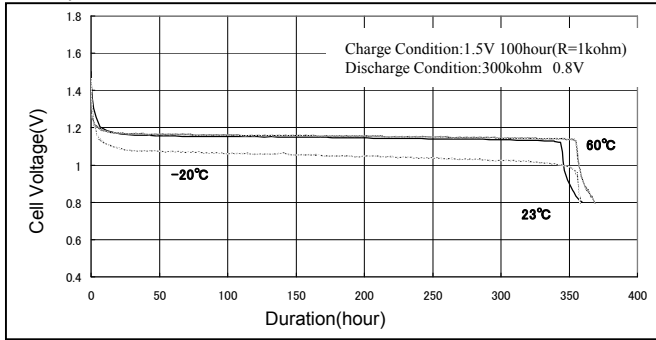


Nominal Capacity* ¹		1.3mAh
Nominal Voltage		1.5V
Standard Charge/Discharge Current		0.005mA
Max. Discharge Current	Continuous* ²	0.15mA
	Pulse* ³	0.50mA
Charge/Discharge Cycle Characteristics	Discharging Depth of 20%	300
Charging Method	Constant Voltage Charge	1.3~2.0V
Temperature Range		-20°C~60°C
Weight		0.10g
Dimensions	Diameter(D)	4.8mm
	Height(H)	2.1mm

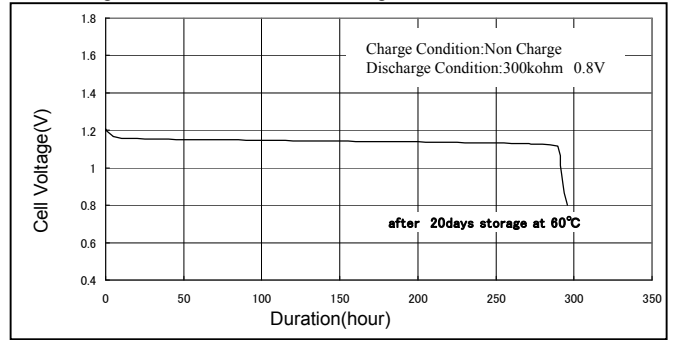
- *1 Nominal capacity is determined to an end voltage of 0.8V when the battery is allowed to discharge at a standard current level at 23°C.
- *2 Current value is determined so that 50% of the nominal capacity is obtained with an end voltage of 0.8V at 23 °C.
- *3 Current value for obtaining 0.8V cell voltage when 15sec. pulse is applied at 50% discharge depth at 23 °C.

Typical Characteristics

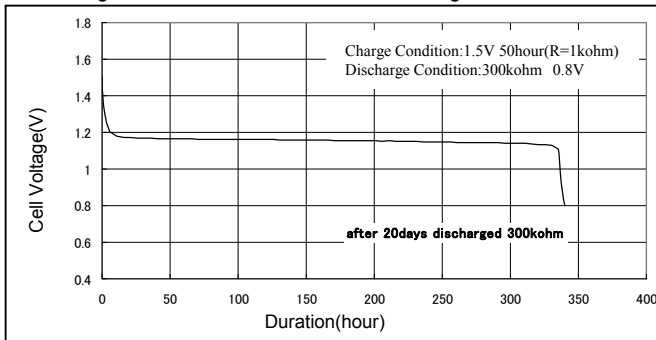
Temperature Characteristics of TL421



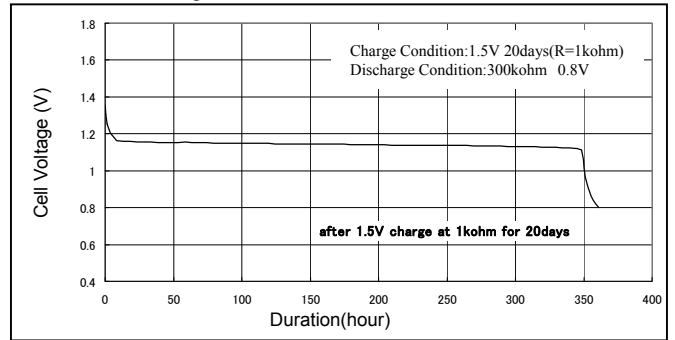
Discharge Characteristics after storage of TL421



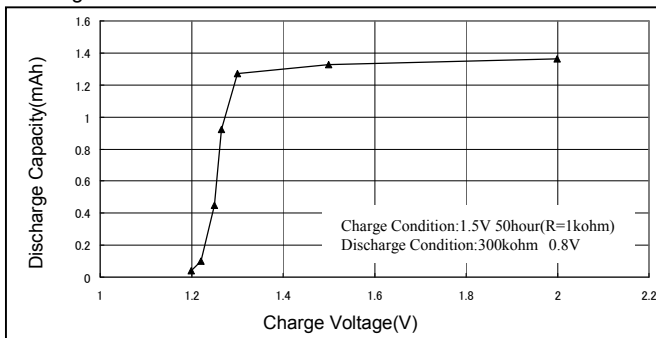
Discharge Characteristics after Over-Discharge of TL421



Continuous Charge Characteristics of TL421



Charge Characteristics of TL421



Charge/Discharge Cycle Characteristics of TL421

