

NUMBER
C-180913

- 180913 CLEAR Polyamide 6.6
- 1 RED *
 - 3 BLUE *
 - 5 BLACK *
 - 7 GRAY *
 - ORANGE *

* NOT YET RELEASED FOR PRODUCTION.

OPTIONAL WAY TO MAKE

DRAFT OPTIONAL

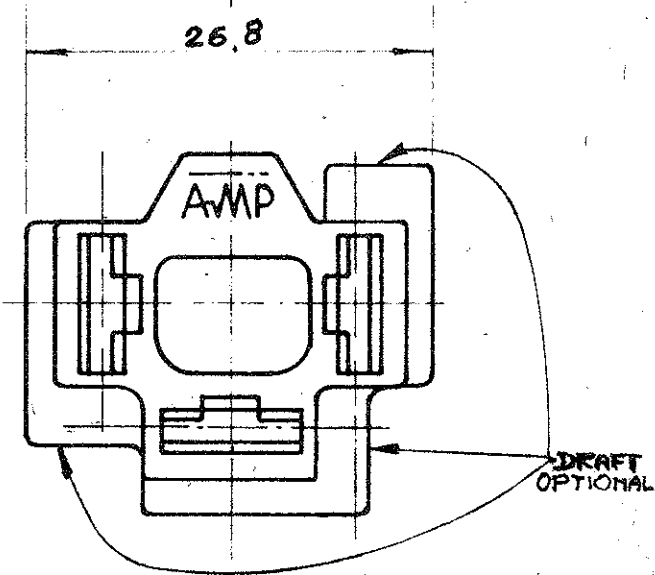
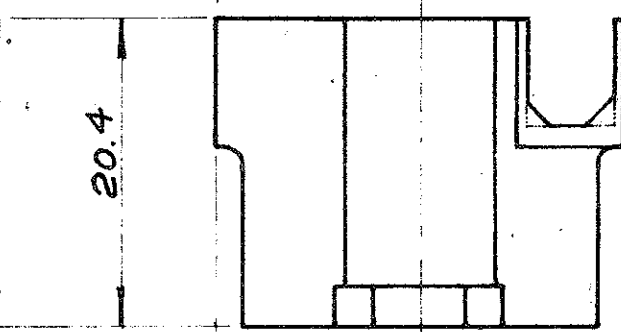
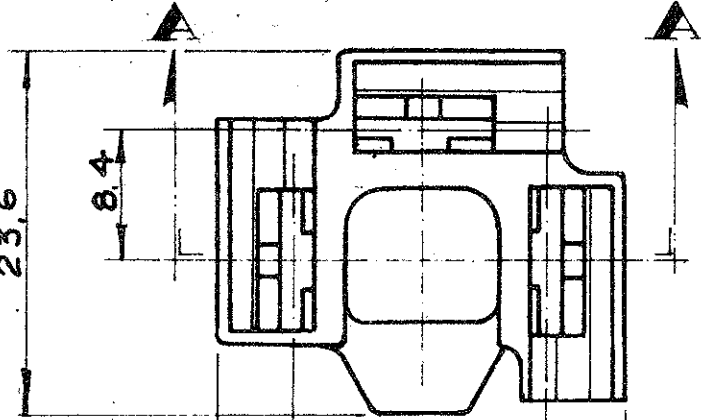
RADII
OPTIONAL

SEC. AA

POLYPROPYLENE	3-180913-0	NOTE1
A.B.S. BLACK	2-180913-5	NOTE1
A.B.S. NATURAL	2-180913-0	NOTE1
RHODIACETA A 21212 BLACK	1-180913-5	INACTIVE
Polyamide 6.6	180913	
MATERIAL	AMP PART NUMBER	

NOTE

1) NOT PRODUCED BY AMP ITALY



DIMENSIONS IN INCHES. DO NOT SCALE PRINT.

M	Revised	EB.	9-83
L	UP-DATED MATERIAL TABLE	20/6/1983	
K	UP-DATED COLOR TABLE	MARCH 77	
J	ADDED OPTIONAL WAY TO MAKE	APR 75	
H	Aggiornato	May 73	
G	REVISED	Nov 77	
F	ADDED NOTES OPTIONAL	B.G. 19-78	
E	REVISED & REDRAWN	A.H. MAY 28-68	
LTR	REVISION RECORD	DR	CHK

© 1967 BY AMP INCORPORATED ALL RIGHTS RESERVED. AMP PRODUCTS COVERED BY PATENTS AND/OR PATENTS PENDING.

CUSTOMER COPY
REFERENCE ONLY

MATERIAL AND FINISH
SEE TABLE



CLASS AUTO-MACH.

WIRE RANGE INSULATION

TYPE 312 FLAG FASTEN-ON

TOLERANCE EXCEPT AS NOTED ±0.4

SCALE 2-1

NAME 3 WAY FASTEN-ON RECEPTACLE HOUSING

DR	A MERLINO	12-10-62	DE	
CHK	B '62		APP	R. Baker 12-10-62