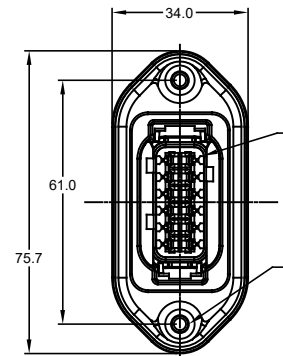
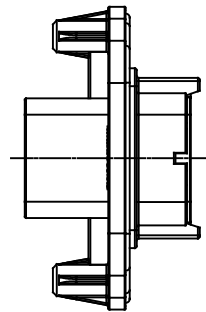
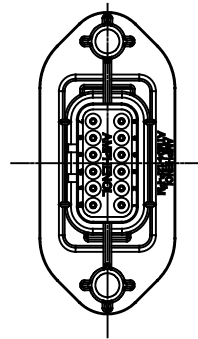
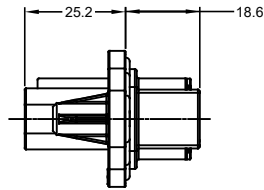
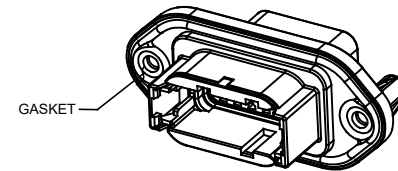


MOUNTING PLATE SIZE



REQUIRES CONTACT RETENTION WEDGE AW12P

2X Ø4.0, 16.4 DP FROM MATING SURFACE
 RECOMMENDED ATTACHMENT OPTIONS:
 1. HEX WASHER HEAD SHEETMETAL SCREW, #10, 1/2" LONG, HEX SIZE 5/16".
 2. SELF THREAD SCREW FOR PLASTIC SUCH AS ST 4.8



GASKET

NOTES: UNLESS OTHERWISE SPECIFIED

1. MATERIAL:
 HOUSING: THERMOPLASTIC; COLOR: BLACK
 END CAP: THERMOPLASTIC; COLOR: BLACK
 STRAIN RELIEF CAP: THERMOPLASTIC; COLOR: GRAY
 INSERT: THERMOPLASTIC; COLOR: PER KEY OPTION
 SEALS: SILICONE RUBBER; COLOR: RED
2. MODIFICATIONS: FLANGE, GASKET, END CAP (OPT), STRAIN RELIEF CAP (OPT)
3. SPECIFICATIONS:
 3.1 CURRENT RATING: 13 AMPS
 3.2 OPERATING TEMPERATURE: -55°C TO +125°C
 3.3 DIELECTRIC WITHSTANDING VOLTAGE: LESS THAN 2 MILLIAMPS CURRENT LEAKAGE @ 1500 VOLTS AC.
 3.4 INSULATION RESISTANCE: 1000 MEGOHMS MIN @ 25°C.
 3.5 MOISTURE RESISTANCE: IP67 (MATED CONDITION)
 3.6 MATING CYCLE DURABILITY: 100 CYCLES
 3.7 RoHS COMPLIANT
4. MATING PART: AT06-12SX* PLUG
 (X = A,B,C,D KEYS; * = MODIFICATIONS AND COLORS)
5. ALL DIMENSIONS ARE FOR REFERENCE USE ONLY.

CONTACT SIZE AND REAR SEAL WIRE RANGE:

CONTACT SIZE	MIN. INSUL O.D.	MAX. INSUL O.D.	TYPICAL WIRE RANGE
20	1.35 mm (.053 in)	3.05 mm (.120 in)	16 - 22 AWG

REVISIONS					
REV	ECO	DESCRIPTION	DATE	BY	APPR
A1	-	RELEASE	6JUL2018	JAH	

TITLE: RECEPTACLE, 12PIN, ATM SERIES, W/FLANGE, GASKET
 DWG NO.: ATM04-12PX-PM1X
 REV: A1
 SH: 1
 OF: 2

SEE SHEET 2 FOR KEYS		PART NUMBER		DESCRIPTION		ITEM
QUANTITY		MATERIALS LIST				
UNLESS OTHERWISE SPECIFIED		SIGNATURES		DATE		<p style="text-align: center;">Amphenol</p> <p style="text-align: center;">Sine Systems - www.amphenol-sine.com 44724 Morley Drive Clinton Township, MI 48036</p> <p style="text-align: center;">RECEPTACLE, 12 PIN, ATM SERIES, W/FLANGE, GASKET</p>
1) All dimensions are in metric(mm).		DRAWN: J. HEAD		16MAR18		
2) Tolerances are as follows:		CHECKED:				
3) PL DEC ±0.30 2 PL DEC ±0.15 3 PL DEC ±0.08		ENGINEER:				
3) Note reference =		APPROVAL:				
MATERIAL SPECIFICATIONS:		CUSTOMER:				
PROCESS SPECIFICATIONS:		THIS DRAWING IS SUPPLIED FOR INFORMATION ONLY. DESIGN FEATURES, SPECIFICATIONS AND PERFORMANCE DATA SHOWN HEREON ARE THE PROPERTY OF THE AMPHENOL CORPORATION. NO RIGHTS OF REPRODUCTION ARE IMPLIED. ALL DIMENSIONS ARE SUBJECT TO NORMAL MANUFACTURING VARIATIONS.		SCALE: NONE		SIZE: B C- TYPE: ATM04-12PX-PM1X REVISION: A1
NEXT ASSY:				SHEET 1 OF 2		

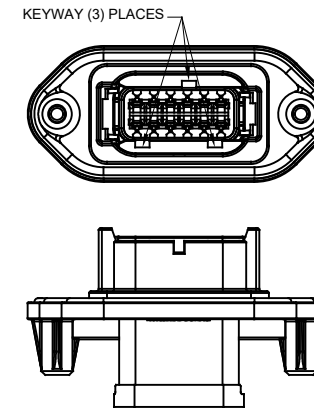
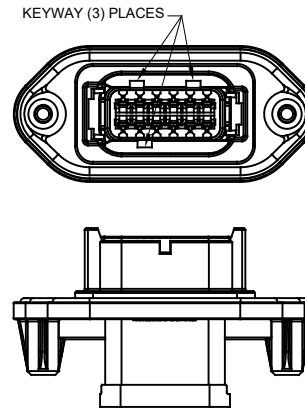
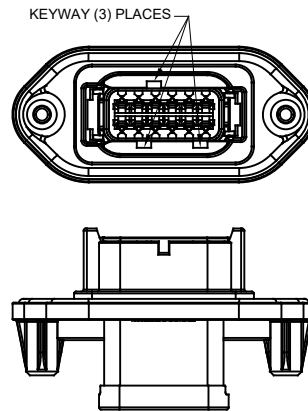
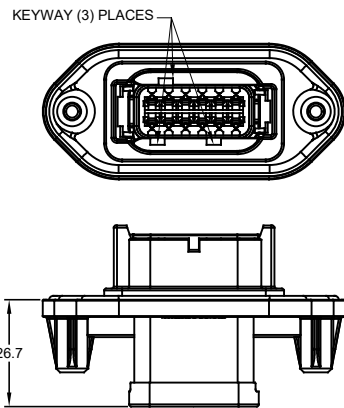
REVISIONS					
REV	ECO	DESCRIPTION	DATE	BY	APPR
A1	-	RELEASE	6JUL2018	JAH	

P/N ATM04-12PA-PM1X
KEY-A CONFIGURATION
INSERT COLOR: GREY

P/N ATM04-12PB-PM1X
KEY-B CONFIGURATION
INSERT COLOR: BLACK

P/N ATM04-12PC-PM1X
KEY-C CONFIGURATION
INSERT COLOR: GREEN

P/N ATM04-12PD-PM1X
KEY-D CONFIGURATION
INSERT COLOR: BROWN



26.7

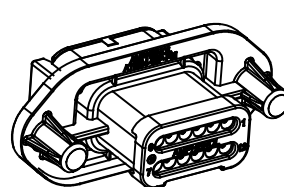
END CAP SHOWN
IN THESE VIEWS

KEY-A CONFIGURATION		
END CAP	STRAIN RELIEF CAP	PART NUMBER
NO	NO	ATM04-12PA-PM11
YES	NO	ATM04-12PA-PM13
NO	YES	ATM04-12PA-PM15

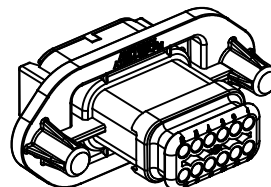
KEY-B CONFIGURATION		
END CAP	STRAIN RELIEF CAP	PART NUMBER
NO	NO	ATM04-12PB-PM11
YES	NO	ATM04-12PB-PM13
NO	YES	ATM04-12PB-PM15

KEY-C CONFIGURATION		
END CAP	STRAIN RELIEF CAP	PART NUMBER
NO	NO	ATM04-12PC-PM11
YES	NO	ATM04-12PC-PM13
NO	YES	ATM04-12PC-PM15

KEY-D CONFIGURATION		
END CAP	STRAIN RELIEF CAP	PART NUMBER
NO	NO	ATM04-12PD-PM11
YES	NO	ATM04-12PD-PM13
NO	YES	ATM04-12PD-PM15



SHOWN WITH
END CAP



SHOWN WITH
STRAIN RELIEF CAP

QUANTITY	PART NUMBER	DESCRIPTION	ITEM
		MATERIALS LIST	
UNLESS OTHERWISE SPECIFIED		SIGNATURES	DATE
1) All dimensions are in metric (mm).		DRAWN: J. HEAD	16MAR18
2) Tolerances are as follows:		CHECKED:	
1 PL DEC ±0.30		ENGINEER:	
2 PL DEC ±0.15		APPROVAL:	
3 PL DEC ±0.08		CUSTOMER:	
3) Note reference =		THIS DRAWING IS SUPPLIED FOR INFORMATION ONLY. DESIGN FEATURES, SPECIFICATIONS AND PERFORMANCE DATA SHOWN HEREON ARE THE PROPERTY OF THE AMPHENOL CORPORATION. NO RIGHTS OF REPRODUCTION ARE IMPLIED. ALL DIMENSIONS ARE SUBJECT TO NORMAL MANUFACTURING VARIATIONS.	
MATERIAL SPECIFICATIONS:		Sine Systems - www.amphenol-sine.com 44724 Morley Drive Clinton Township, MI 48036	
PROCESS SPECIFICATIONS:		RECEPTACLE, 12 PIN, ATM SERIES, W/FLANGE, GASKET	
NEXT ASSY:		SIZE: B	TYPE: C-
		DWS NO: ATM04-12PX-PM1X	
		REVISION: A1	
		SCALE: NONE	SHEET 2 OF 2

TITLE: RECEPTACLE, 12 PIN, ATM SERIES, W/FLANGE, GASKET
DWG NO: ATM04-12PX-PM1X
REV: A1
SH: 2
OF: 2