

ASSP

TRIAC Dimmable LED Driver IC for LED Lighting

MB39C601

■ DESCRIPTION

MB39C601 is a flyback type switching regulator controller IC. The LED current is regulated by controlling the switching on-time or controlling the switching frequency, depending on the LED load.

It is most suitable for the general lighting applications, for example stocks of commercial and residential light bulbs and so on.

■ FEATURES

- High power factor in single conversion
- High efficiency at the light load, at Low Power Mode (LPM) Burst Operation in switching frequency control
- Frequency setting depend on the FB pin current : 30 kHz to 130 kHz
- Control of the current of Primary Winding without the external sense resistor
- TRIAC Dimmable LED lighting
- Helps to achieve high efficiency and low EMI by detecting transformer zero energy
- Built-in under voltage lock out function
- Built-in over load protection function
- Built-in output over voltage protection function
- Built-in over temperature protection function
- LED load : 25W (Max)
- Input voltage range VDD : 9V to 20V
- Input voltage range for LED lighting applications : AC110V_{RMS}, AC230V_{RMS}
- Package : SOP-8 (3.9mm × 5.05mm × 1.75mm [Max])

■ APPLICATIONS

- LED lighting
- TRIAC dimmable LED lighting etc.



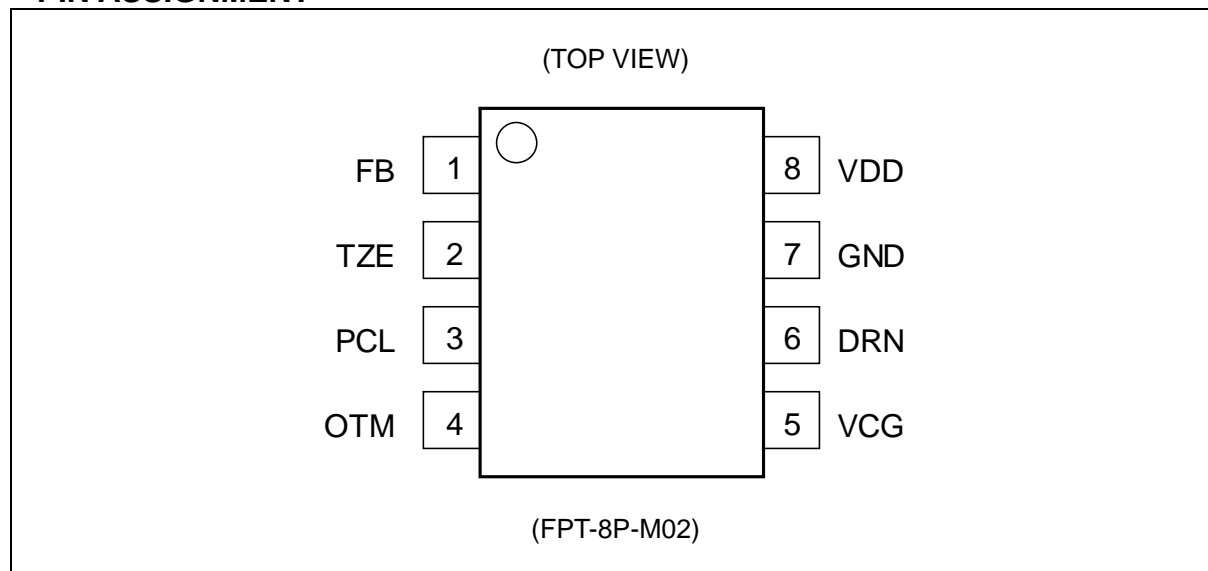
Power Supply online Design Simulation Easy DesignSim

This product supports the web-based design simulation tool.
It can easily select external components and can display useful information.
Please access from the following URL.

<http://edevic.fujitsu.com/pmic/en-easy/?m=ds>

MB39C601

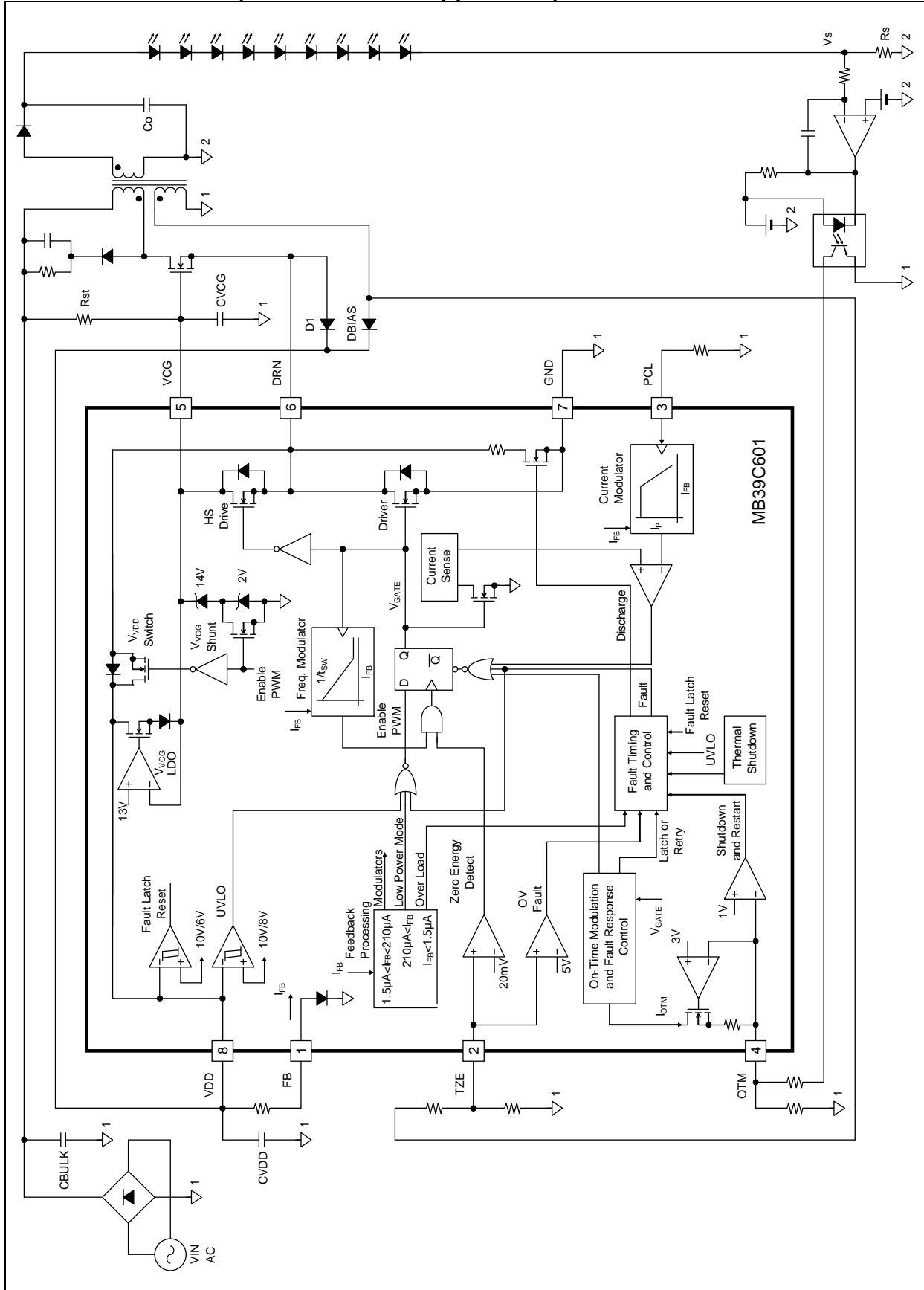
■ PIN ASSIGNMENT



■ PIN DESCRIPTIONS

Pin No.	Pin Name	I/O	Description
1	FB	I	Switching frequency setting pin.
2	TZE	I	Transformer auxiliary winding zero energy detecting pin.
3	PCL	I	Pin for controlling peak current of transformer primary winding.
4	OTM	I	On-time setting pin.
5	VCG	-	External MOSFET gate bias pin.
6	DRN	O	External MOSFET source connection pin.
7	GND	-	Ground pin.
8	VDD	-	Power supply pin.

■ BLOCK DIAGRAM (On-time control application)



■ ABSOLUTE MAXIMUM RATINGS

Parameter	Symbol	Condition	Rating		Unit
			Min	Max	
Power supply voltage	V _{VDD}	VDD pin	-0.3	+25.0	V
Input voltage	V _{DRN}	DRN pin	-	+20.0	V
	V _{VCG}	VCG pin	-0.3	+16.0	V
	V _{TZE}	TZE pin	-0.3	+6.0	V
	V _{OTM}	OTM pin	-0.3	+6.0	V
	V _{PCL}	PCL pin	-0.3	+6.0	V
	V _{FB}	FB pin	-0.3	+2.0	V
Input current	I _{VCG}	VCG pin	-	10	mA
	I _{OTM}	OTM pin	-1	0	mA
	I _{PCL}	PCL pin	-1	0	mA
	I _{FB}	FB pin	0	1	mA
Output current	I _{DRN}	DRN pin	-	800	mA
	I _{DRN}	DRN pin Pulsed 400ns, 2% duty cycle	-1.5	+6.0	A
Power dissipation	P _D	T _a ≤ +25°C	-	800*	mW
Storage temperature	T _{STG}		-55	+125	°C

*: The value when using two layers PCB.

Reference: θ_{ja} (wind speed 0m/s): 125°C/W

WARNING: Semiconductor devices can be permanently damaged by application of stress (voltage, current, temperature, etc.) in excess of absolute maximum ratings. Do not exceed these ratings.

■ RECOMMENDED OPERATING CONDITIONS

Parameter	Symbol	Condition	Value			Unit
			Min	Typ	Max	
VDD pin input voltage	VDD	VDD pin	9	-	20	V
VCG pin input voltage	VCG	VCG pin (from low-impedance source)	9	-	13	V
VCG pin input current	I _{VCG}	VCG pin (from high-impedance source)	10	-	2000	μA
OTM pin ground resistance	R _{OTM}	OTM pin Shutdown/retry mode	25	-	100	kΩ
		OTM pin Latch-off mode	150	-	750	kΩ
PCL pin ground resistance	R _{PCL}	PCL pin	24.3	-	200.0	kΩ
TZE pin connection resistance	R _{TZE1}	TZE pin Auxiliary winding connection resistor	50	-	200	kΩ
VCG pin grounded capacity	C _{VCG}	VCG pin	33	-	200	nF
VDD pin bypass capacity	C _{BP}	Ceramic capacitor value to set between VDD and GND pin	0.1	-	1.0	μF
Operating ambient temperature	T _a	-	-40	+25	+85	°C

WARNING: The recommended operating conditions are required in order to ensure the normal operation of the semiconductor device. All of the device's electrical characteristics are warranted when the device is operated within these ranges.

Always use semiconductor devices within their recommended operating condition ranges.

Operation outside these ranges may adversely affect reliability and could result in device failure.

No warranty is made with respect to uses, operating conditions, or combinations not represented on the data sheet. Users considering application outside the listed conditions are advised to contact their representatives beforehand.

■ ELECTRICAL CHARACTERISTICS

(Ta = +25°C, V_{VDD} = 12V)

Parameter		Symbol	Pin No.	Condition	Value			Unit
					Min	Typ	Max	
VDD and VCG SUPPLY	VCG voltage (Operating)	VCG (OPERATING)	5	V _{VDD} =14V, I _{VCG} =2.0mA	13	14	15	V
	VCG voltage (Disable)	VCG (DISABLED)	5	V _{VDD} =12V, I _{VCG} =26μA, I _{FB} =350μA	15	16	17	V
	VCG voltage difference	ΔVCG	5	VCG _(DISABLED) - VCG _(OPERATING)	1.75	2.00	2.15	V
	VCG Shunt input current	I _{VCG(SREG)}	5	V _{VCG} =VCG _(DISABLED) - 100mV, V _{VDD} =12V	-	12	26	μA
	VCG Shunt Load Regulation	ΔVCG _(SREG)	5	26μA < I _{VCG} ≤ 5mA, I _{FB} =350μA	-	125	200	mV
	VCG LDO regulation voltage	VCG _(LREG)	5	V _{VDD} =20V, I _{VCG} =-2mA	-	13	-	V
	VCG LDO Dropout voltage	VCG (LREG, DO)	-	V _{VDD} -VCG, V _{VDD} =11V, I _{VCG} =-2mA	-	2.0	2.8	V
	UVLO Turn-on threshold voltage	VDD _(ON)	8	-	9.7	10.2	10.7	V
	UVLO Turn-off threshold voltage	VDD _(OFF)	8	-	7.55	8.00	8.50	V
	UVLO hysteresis	ΔVDD _(UVLO)	8	VDD _(ON) - VDD _(OFF)	1.9	2.2	2.5	V
	VDD switch on-resistance	R _{DS, ON (VDD)}	6,8	V _{VCG} =12V, V _{VDD} =7V, I _{DRN} =50mA	-	4*	10*	Ω
	Fault Latch Reset VDD voltage	VDD (FAULT RESET)	8	-	5.6	6.0	6.4	V

Parameter		Symbol	Pin No.	Condition	Value			Unit
					Min	Typ	Max	
MODULATION	Minimum switching period	$t_{SW(HF)}$	6	FM mode $I_{FB}=5\mu A$	7.215	7.760	8.305	μs
	Maximum switching period	$t_{SW(LF)}$	6	$I_{FB}=I_{FB, CNR3} -20\mu A$	31.5	35.0	38.5	μs
	DRN peak current	$I_{DRN(peak)}$	6	$I_{FB}=5\mu A, I_{PCL}=100\mu A$	-	3*	-	A
			6	$I_{FB}=5\mu A, I_{PCL}=30\mu A$	-	1*	-	A
	Minimum peak current for R_{PCL} open	$I_{DRN(peak, absmin)}$	6	$R_{PCL} = OPEN$	-	0.45*	-	A
	ILIM blanking time	$t_{BLANK(ILIM)}$	6	$I_{FB}=5\mu A, R_{PCL}=100k\Omega, 1.2A$ pull-up on DRN	-	400*	-	ns
	PCL voltage	V_{PCL}	3	$I_{FB}=5\mu A$	2.94	3.00	3.06	V
			3	$I_{FB}=230\mu A$	0.95	1.00	1.05	V
	I_{FB} range for FM mode	$I_{FB, CNR1}$	1	$t_S=t_{S(LF)}, I_{DRN}=I_{DRN(peak, max)}$	145	165	195	μA
	I_{FB} range for AM mode	$I_{FB, CNR2}$ - $I_{FB, CNR1}$	1	$t_S=t_{S(LF)}, I_{DRN(peak)}$ variation range= $I_{DRN(peak, max)}$ to $I_{DRN(peak, min)}$	35	45	65	μA
	I_{FB} range for LPM	$I_{FB, CNR3}$ - $I_{FB, CNR2}$	1	-	50	70	90	μA
I_{FB} hysteresis for LPM	$I_{FB, LPM-HYST}$	1	-	10	25	40	μA	
FB voltage	V_{FB}	1	$I_{FB}=10\mu A$	0.34	0.70	0.84	V	
DRIVER	Driver on-resistance	$R_{DS(on)(DRN)}$	6,7	$I_{DRN}=4.0A$	-	200*	400*	$m\Omega$
	Driver off leakage current	$I_{DRN(OFF)}$	6,7	$V_{DRN}=12V$	-	1.5	20.0	μA
	High-side driver on-resistance	$R_{DS(on)(HS-DRV)}$	5,6	High-side Driver current=50mA	-	6*	11*	Ω
	DRN discharge current	I_{DIS}	6,7	$V_{DD}=OPEN, DRN=12V, Fault$ latch set	2.38	3.40	4.42	mA
TRANSFORMER ZERO ENERGY DETECTION	TZE zero energy threshold voltage	$V_{TZE(TH)}$	2	-	5*	20*	50*	mV
	TZE clamp voltage	$V_{TZE(CLAMP)}$	2	$I_{TZE}= -10\mu A$	-200	-160	-100	mV
	Start timer operation threshold voltage	$V_{TZE(START)}$	2	-	0.10	0.15	0.20	V
	Driver turn-on Delay time	$t_{DRY(TZE)}$	6	150 Ω pull-up 12V on DRN	-	150	-	ns
	Wait time for zero energy detection	$t_{WAIT(TZE)}$	6	-	2.0	2.4	2.8	μs
	Start timer period	t_{ST}	6	$V_{TZE}=0V$	150	240	300	μs

MB39C601

Parameter		Symbol	Pin No.	Condition	Value			Unit
					Min	Typ	Max	
OVERVOLTAGE FAULT	OVP threshold voltage	$V_{TZE(OVP)}$	2	-	4.85	5.00	5.15	V
	OVP blanking time	$t_{BLANK, OVP}$	6	-	0.6	1.0	1.7	μs
	Input bias current	$I_{TZE(bias)}$	2	$V_{TZE}=5V$	-0.1	0	+0.1	μA
OVERLOAD FAULT	Over Load detection current	$I_{FB(OL)}$	1	-	0*	1.5*	3.0*	μA
	Over Load delay time	t_{OL}	6	$I_{FB}=0A$	200	250	300	ms
	Retry time after Over Load	t_{RETRY}	6	$R_{OTM}=76k\Omega$	-	750	-	ms
	Over Load detection boundary resistance	$R_{OTM(TH)}$	4	-	100	120	150	$k\Omega$
SHUTDOWN THRESHOLD	Shutdown Threshold voltage	$V_{OTM(Vth)}$	4	OTM= 	0.7	1.0	1.3	V
	Shutdown OTM current	$I_{OTM, PU}$	4	$V_{OTM} = V_{OTM(vth)}$	-600	-450	-300	μA
MAXIMUM ON TIME	ON-Time	t_{OTM}	6	$R_{OTM}=383k\Omega$	3.74	4.17	4.60	μs
			6	$R_{OTM}=76k\Omega$	3.4	3.8	4.2	μs
	OTM voltage	V_{OTM}	4	-	2.7	3.0	3.3	V
OTP	Protection temperature	T_{SD}	-	T_j , temperature rising	-	+150*	-	$^{\circ}C$
	Protection temperature hysteresis	T_{SD_HYS}	-	T_j , temperature falling, degrees below T_{SD}	-	25*	-	$^{\circ}C$
POWER SUPPLY CURRENT	Power supply current	$I_{VDD (STATIC)}$	8	$V_{VDD}=20V, V_{TZE}=1V$	1.36	1.80	2.34	mA
		$I_{VDD (OPERATING)}$	8	$V_{VDD}=20V$	-	3.0*	3.7*	mA
	Power supply current for LPM	$I_{VDD(LPM)}$	8	$I_{FB}=350\mu A$	-	550	900	μA
	Power supply current for UVLO	$I_{VDD(UVLO)}$	8	$V_{VDD} = V_{DD(ON)} - 100mV$	-	285	500	μA

*: Standard design value

■ FUNCTION EXPLANATION

(1) LED Current Control Function

MB39C601 is a flyback type switching regulator controller. The LED current is regulated by controlling the switching on-time or controlling the switching frequency depending on the LED load.

The LED current is converted into detecting voltage (V_s) by sense resistor (R_s) connected in series with LED. V_s is compared by an external error amplifier (Err AMP). When V_s falls below a reference voltage, Err AMP output rises and the current that flows into the Opto-Coupler is decreased.

The OTM pin current is controlled via the Opto-Coupler in the on-time control block. In on-time control, it controls on-time at OTM pin current. So, on-time increases when the current of the OTM pin decreases. And the average current supplied to LED is regulated, because on-time is regulated at the constant switching frequency.

The FB pin current is controlled via the Opto-Coupler in the switching frequency control block. In switching frequency control, it controls switching frequency at FB pin current. So, switching frequency becomes high when the current of the FB pin decreases. And the average current supplied to LED is regulated, because switching frequency is regulated at the constant on-time.

(2) Cascode Switching

The switch in Primary Winding is a cascode connection. The gate of external MOSFET is connected with the VCG pin, and the source is connected with the drain of internal Driver MOSFET.

When the switch is on-state, internal Driver MOSFET is turned on, HS Driver MOSFET is turned off, and the source voltage of external MOSFET goes down to GND. For this period the DC bias is supplied to the gate of external MOSFET from the VCG pin. Therefore external MOSFET is turned on.

When the switch is off-state, internal Driver MOSFET is turned off, HS Driver MOSFET is turned on, and the source voltage of external MOSFET goes up to VCG voltage. For this period the DC bias is supplied to the gate of external MOSFET from VCG pin. Therefore external MOSFET is turned off.

Moreover, the current flowing into internal Driver MOSFET is equal to the current of Primary Winding. Therefore, the peak current into Primary Winding can be detected without the sense resistor.

(3) Natural PFC (Power Factor Correction) Function

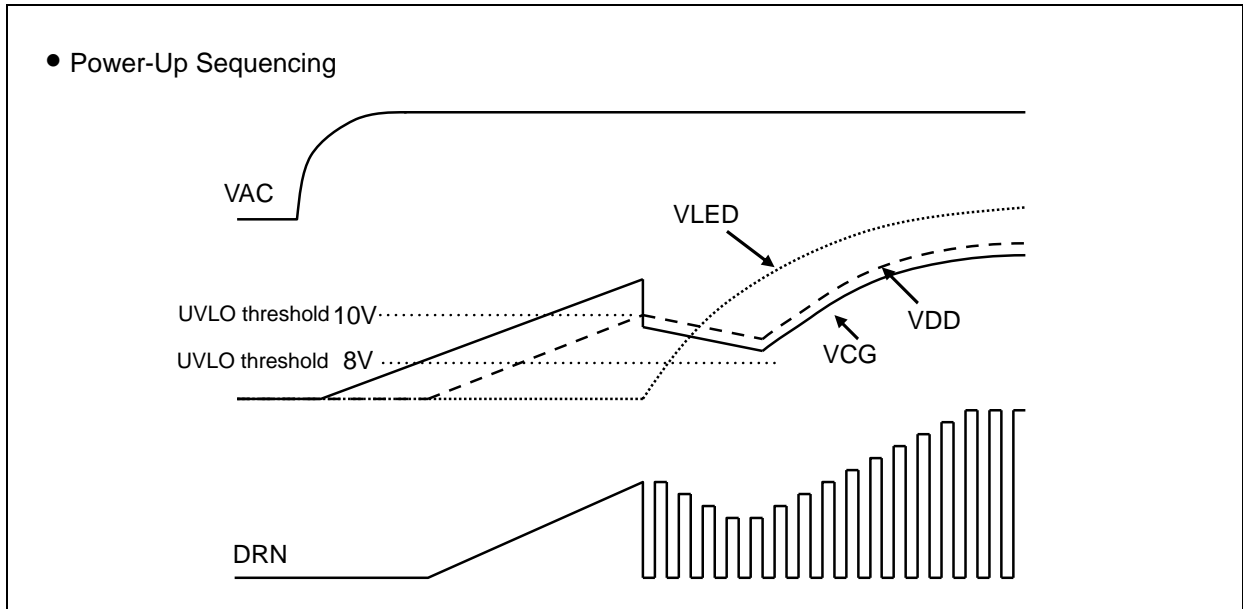
In the AC voltage input, when the input current waveform is brought close to the sine-wave, and the phase difference is brought close to Zero, Power Factor is improved.

In the flyback method operating in discontinuous conduction mode, when the input capacitance is set small, the input current almost becomes equal with peak current of Primary Winding.

$$I_{\text{PEAK}} = \left(\frac{V_{\text{BULK}} \times t_{\text{ON}}}{L_{\text{MP}}} \right) = \left(\frac{V_{\text{BULK}}}{\left(\frac{L_{\text{MP}}}{t_{\text{ON}}} \right)} \right)$$

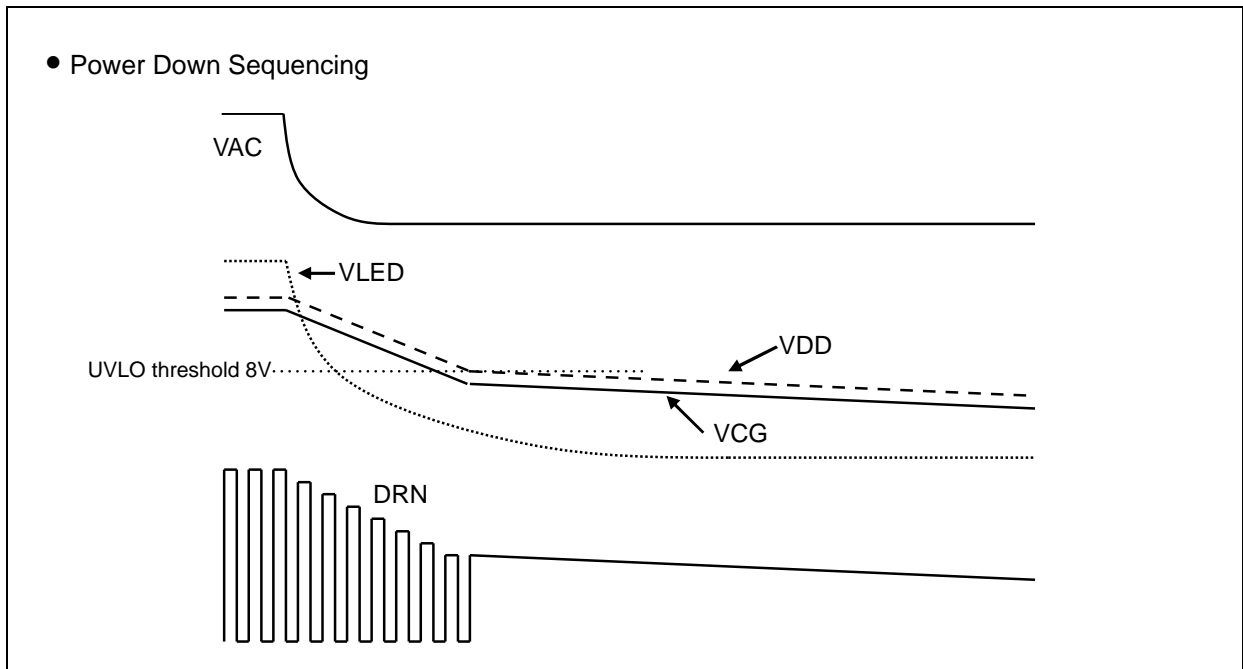
V_{BULK} : Supply voltage of Primary Winding
 L_{MP} : Inductance of Primary Winding
 t_{ON} : On-time

In on-time control, if loop response of Error Amp. is set to lower than the AC frequency (below 1/10 of the AC frequency), on-time can be constant. Therefore, input current is proportional to input voltage, so Power Factor is regulated.



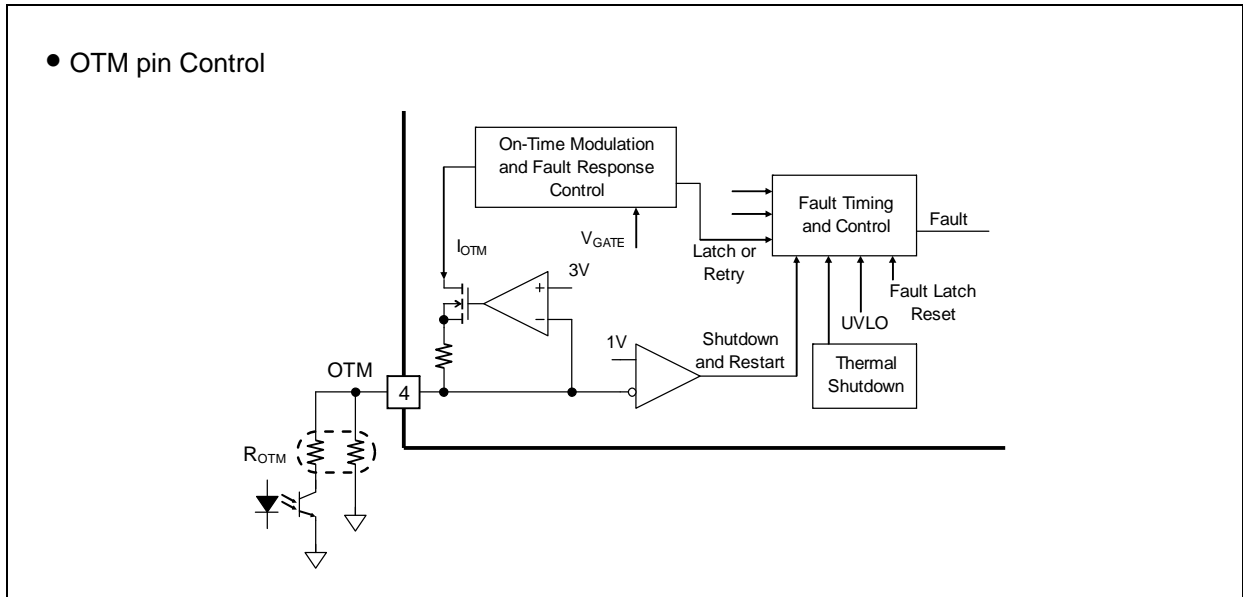
(5) Power Down Sequencing

When AC power is removed from the AC line, the current does not flow to Secondary Winding even if HV MOSFET is switching. The LED current is supplied from the output capacitance and decreases gradually. Similarly, the voltage at the VDD pin decreases because the current does not flow into Auxiliary Winding. The switching stops and MB39C601 becomes shutdown when the voltage at the VDD pin falls below the threshold voltage of UVLO.



(6) OTM Part

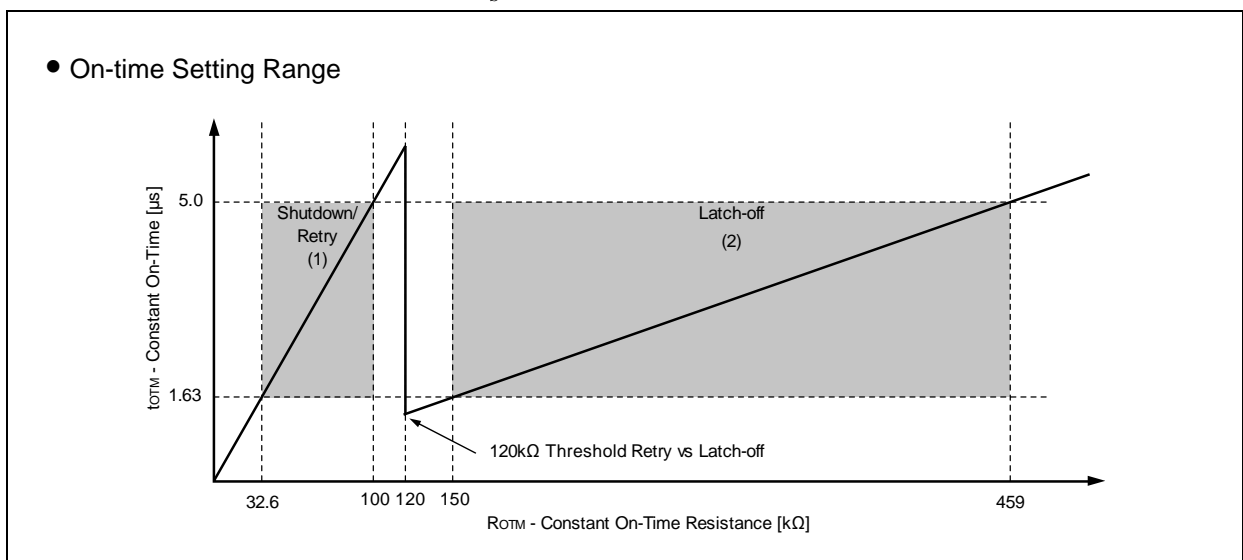
It is set on-time by connecting resistor (R_{OTM}) with the OTM pin. As shown in following figure, the on-time can be controlled by connecting the collector of the Opto-Coupler through resistor from OTM.



The following figure shows how the on-time is programmed over the range of between $1.5\mu\text{s}$ and $5.0\mu\text{s}$ for either range of programming resistors. The resistor range determines the controller response to a sustained overload fault (to either latch-off or to shutdown/retry). See the item of the overload protection about details of "latch-off" and "shutdown/retry". On-time is related to the programmed resistor based on the following equations.

$$(1) R_{OTM} = t_{OTM} \times (2 \times 10^{10} \left[\frac{\Omega}{s} \right])$$

$$(2) R_{OTM} = t_{OTM} \times (0.918 \times 10^{11} \left[\frac{\Omega}{s} \right])$$



Moreover, it can be shutted down by making the voltage of the OTM pin below " $V_{OTM(V_{th})}$ (typ 1V)".

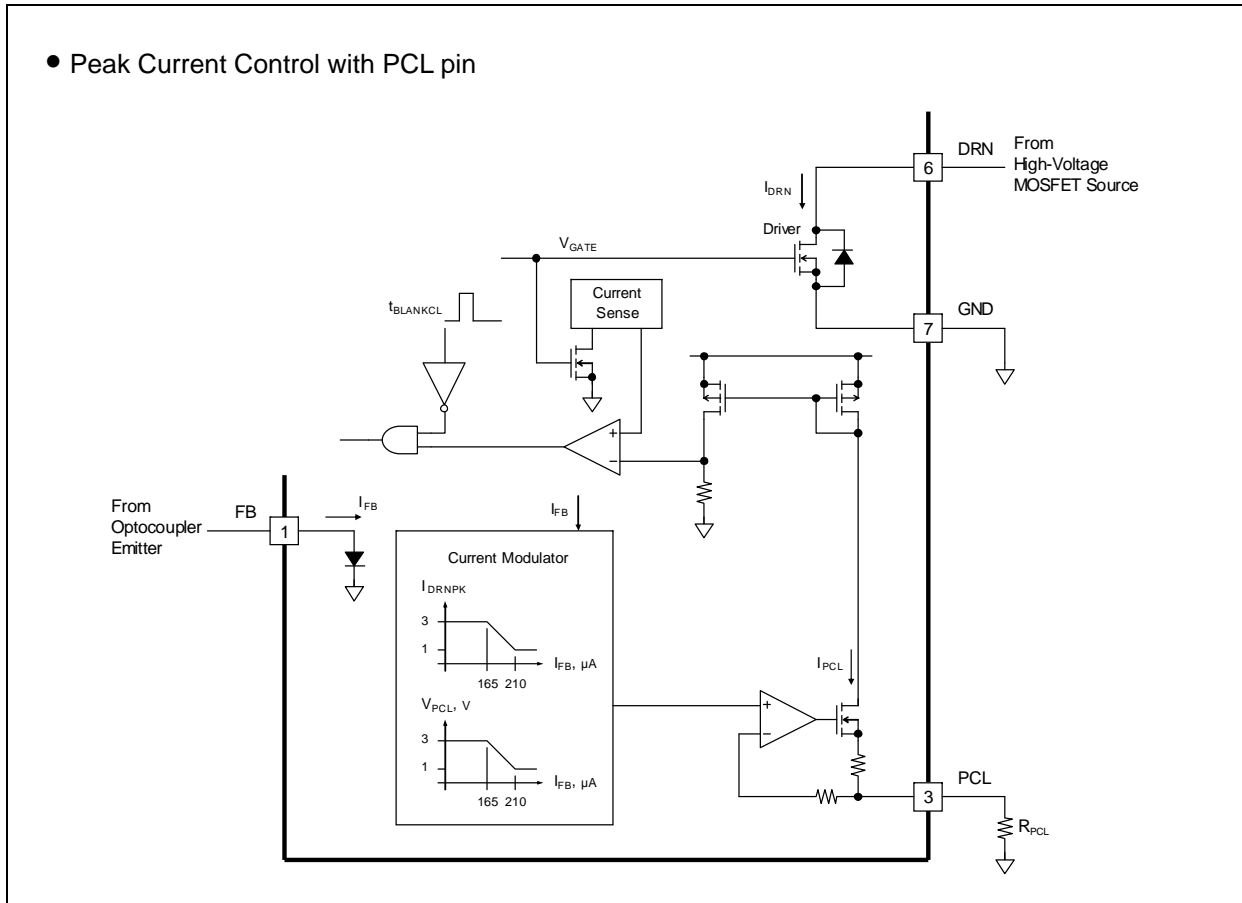
(7) PCL Part

It is set the peak current of Primary Winding by connecting resistor with the PCL pin.

The maximum peak current of Primary Side is set by connecting resistor (R_{PCL}) between the PCL pin and GND.

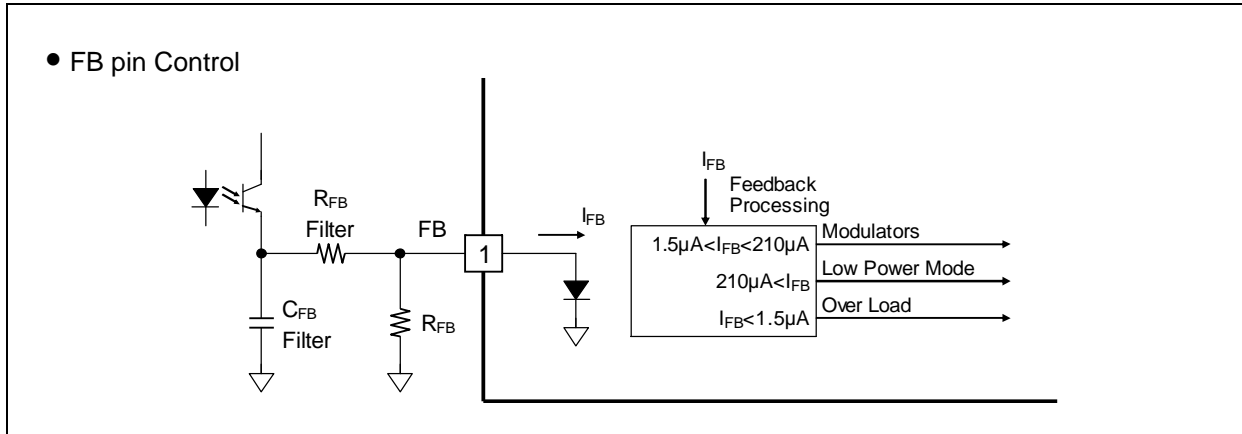
$$I_{DRN(pk)} = \left(\frac{100kV}{R_{PCL}} \right)$$

An about 400ns blanking time of the beginning of switching cycle is masking the spike noise. As a result, it prevents the sense of current from malfunctioning (See the figure below.).



(8) FB Part

The switching frequency is controlled by setting the current of the FB pin. In on-time control, the switching frequency is set by pulling up the FB pin to VDD. Moreover, as shown in following figure, it is possible to control the switching frequency by connecting the emitter of the Opto-Coupler from the FB pin through resistor. Resistor (R_{FB}) is connected to bleed off the dark current of Opto-Coupler.



MB39C601 becomes the following three modes by FB current (I_{FB}).

1. Frequency Modulation Mode (FM)

The peak current of HV-MOSFET is set to the maximum, and the LED current is regulated by adjusting the switching frequency with I_{FB} . The range of the switching frequency is from 30 kHz to 130 kHz. Maximum peak current $I_{DRN (peak, max)}$ of HV-MOSFET is set by the resistance of the PCL pin.

2. Amplitude Modulation Mode (AM)

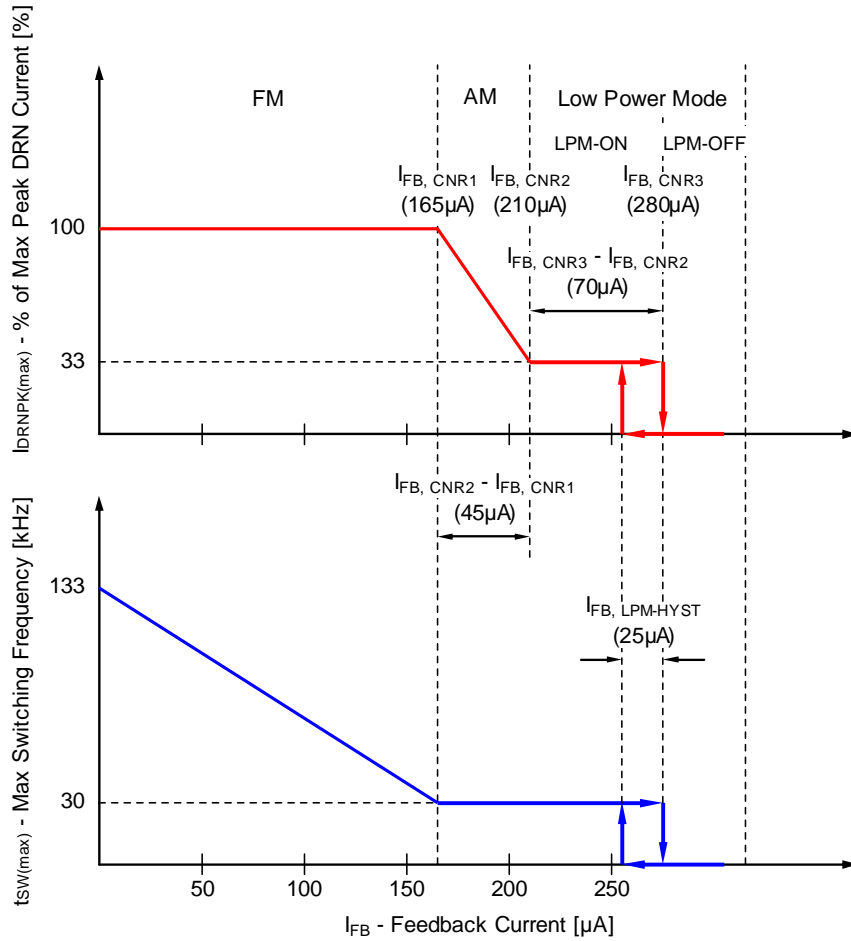
The LED current is regulated by adjusting the peak current of HV-MOSFET with I_{FB} . The switching frequency is about 30 kHz. And the range of HV-MOSFET of the peak current is from 33% to 100% of the maximum. Maximum peak current $I_{DRN (peak, max)}$ of HV-MOSFET is set by the resistance of the PCL pin.

3. Low Power Mode (LPM)

MB39C601 becomes two states of LPM-ON and LPM-OFF at a light load. In the LPM-ON mode, it is operated at 30 kHz switching frequency. And the current is supplied to LED. At this time, the feedback current from the Opto-Coupler increases, and it changes to the LPM-OFF mode. In the LPM-OFF mode, it is not operated. And the current is supplied to LED from Co. When the feedback current from the Opto-Coupler decreases, it changes to the LPM-ON mode. LED is lit by the power saving repeating these two states.

Three modes of the FM, AM, and LPM change depending on the load of LED. At the light load, three modes change from FM to AM to LPM.

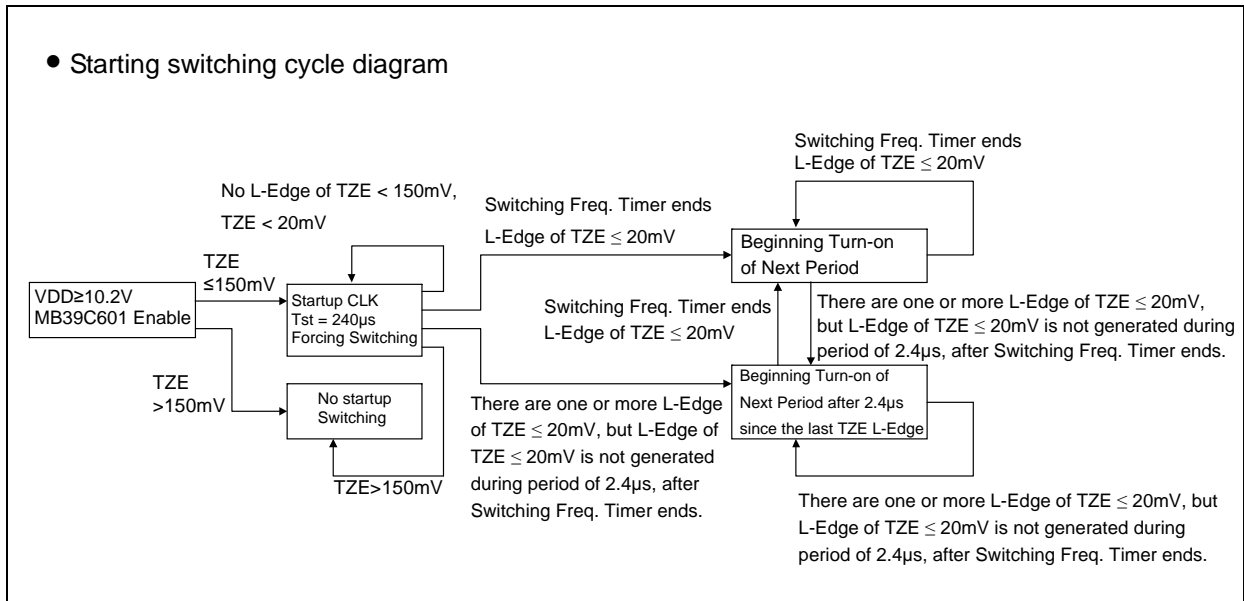
- Switching Frequency and Peak Current Control Operation Based On FB pin



(9) TZE Part

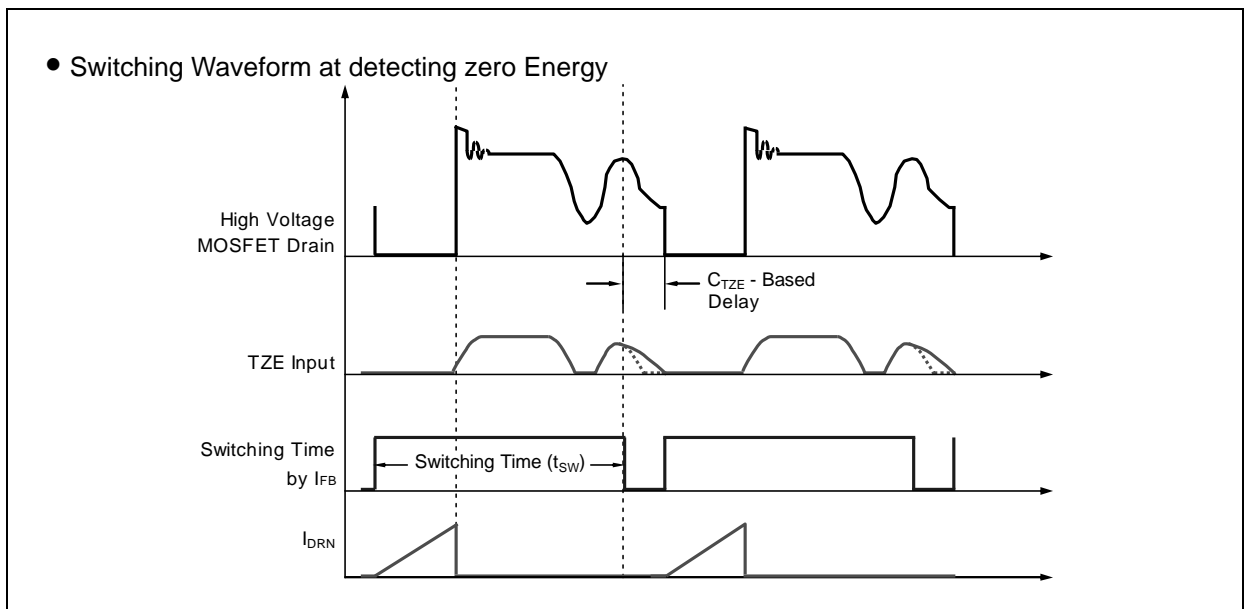
MB39C601 requires all of the following three conditions in order to start the next switching cycle.

1. The time since the last turn-on edge must be equal to or longer than the switching time set by I_{FB} .
2. The time since the last turn-on edge must be longer than the minimum switching period set by MB39C601 (nominally $7.5\mu s$ which equals 133 kHz).
3. Immediately after zero energy detection at the TZE pin. Or, the time since the last zero energy detection must be longer than $t_{WAIT, (TZE)}$ ($2.4\mu s$ or less).

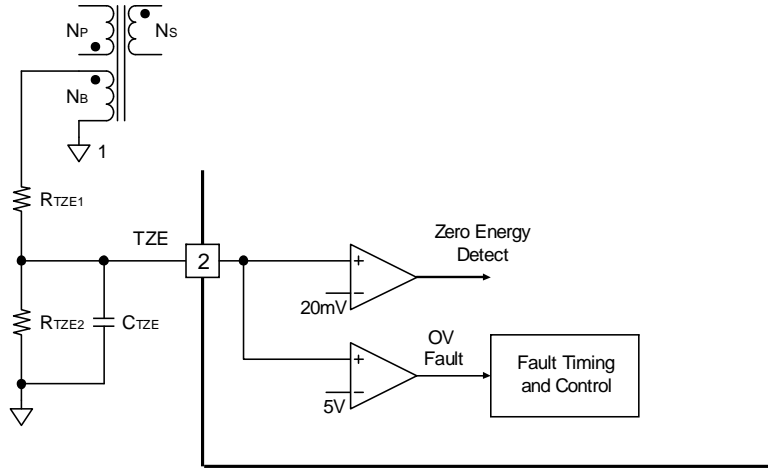


The TZE pin is connected with Auxiliary Winding of the transformer through the resistance division, and detects zero energy as shown "• TZE pin Connection".

A delay, 50ns to 200ns, can be added with C_{TZE} to adjust the turn-on of the primary switch with the resonant bottom of Primary Winding waveform.



- TZE pin Connection



■ VARIOUS PROTECTION CIRCUITS

- Under voltage lockout protection (UVLO)

The under voltage lockout protection (UVLO) protects IC from malfunction and protects the system from destruction/deterioration during the transient state and momentary drop due to start up for the power supply pin voltage (VDD). The voltage decrease of the VDD pin is detected with comparator, and output HS DRIVER is turned off and output DRIVER is turned off, and the switching is stopped. The system returns if the VDD pin becomes more than the threshold voltage of the UVLO circuit.

- Over voltage Protection (OVP)

When LED is in the state of open and the output voltage rises too much, the voltage of Auxiliary Winding and the voltage of the TZE pin rise. The over voltage is detected by sampling this voltage of the TZE pin. When TZE pin voltage rises more than the threshold voltage of OVP, the over voltage is detected. Output HS DRIVER is turned off, and output DRIVER is turned off, and the switching is stopped. (latch-off)

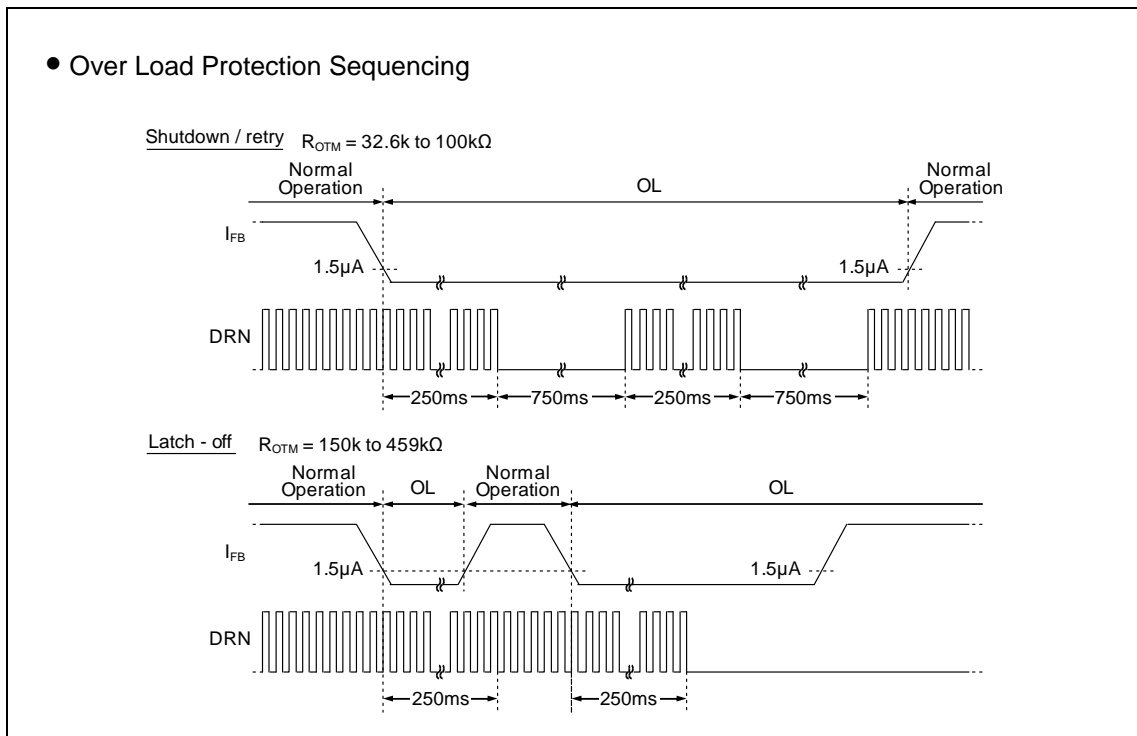
If the VDD pin becomes below the voltage of Fault Latch Reset, OVP is released.

- Over load protection (OL)

When the cathode or the anode of LED is short to GND and it becomes an overloaded status at switching frequency control, the current does not flow into Rs and there is no current feedback to IFB. The current of the FB pin detects the overload with $1.5\mu\text{A}$ or less. OL state is decided to latch-off or shutdown/retry by R_{OTM} .

Shutdown/retry ... $R_{OTM} = 32.6\text{k}\Omega$ to $100\text{k}\Omega$
 MB39C601 becomes two states of switching on for 250ms and switching off for 750ms. These states are repeated. If it is not OL status, it returns.





Latch-off ... $R_{OTM} = 150\text{k}\Omega$ to $459\text{k}\Omega$
 The switching is continued for 250ms. If it does not return from OL states for this period, output HS DRIVER is turned off, and output DRIVER is turned off, and the switching is stopped. If it returns from OL states after this time and the switching is still stopped (latch-off) and the VDD pin becomes below the voltage of Fault Latch Reset, Latch is released.



- Over temperature protection (OTP)

The over temperature protection (OTP) is a function to protect IC from the thermal destruction. When the junction temperature reaches +150°C, output HS DRIVER is turn off, and output DRIVER is turned off, and the switching is stopped. It returns again when the junction temperature falls to +125°C (automatic recovery).

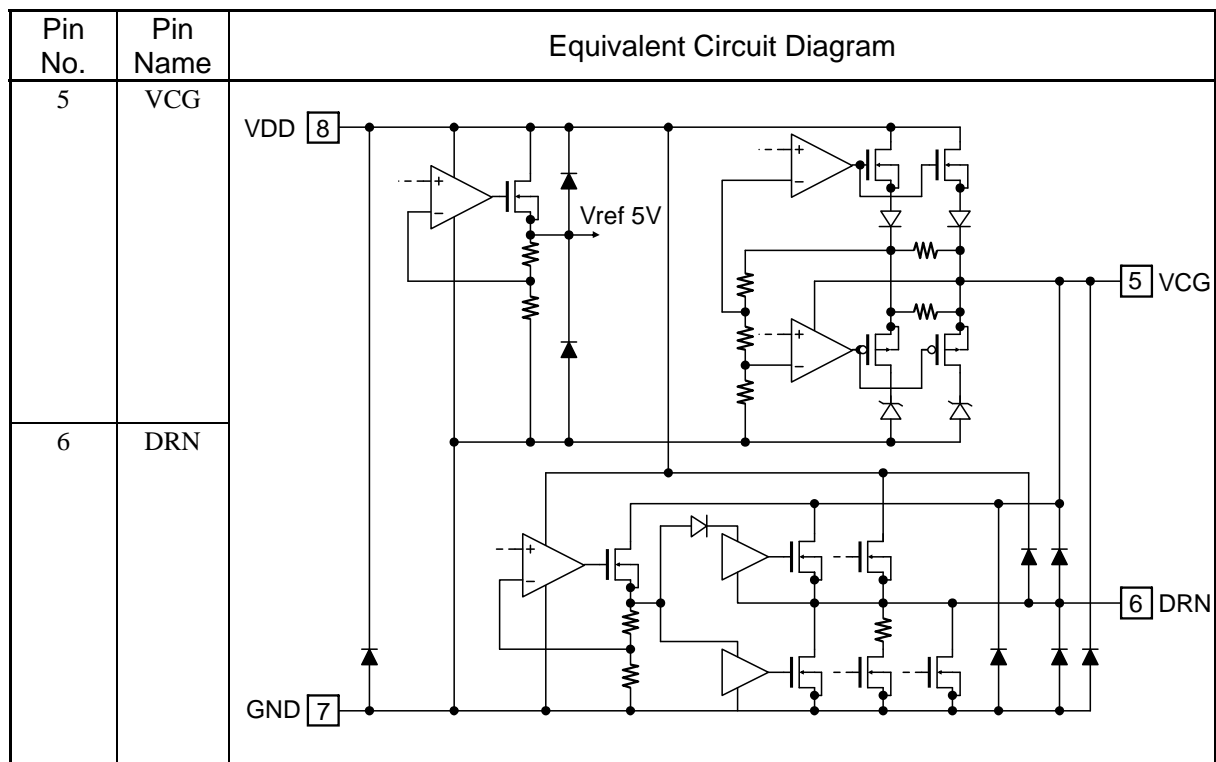
■ VARIOUS FUNCTION TABLES

Function		DRN				Detection Condition at Protected Operation	Return Condition	Remarks
		LS_DRV	HS_DRV	VDD SW	Discharge SW			
Normal Operation				OFF	OFF	-	-	-
Under Voltage Lockout Protection (UVLO)		OFF	OFF	ON	OFF	$VDD < 8.0V$	$VDD > 10.2V$	Standby
OTM Shutdown		OFF	OFF	ON	OFF	$OTM = GND$	$OTM > 1V$	Standby
Over Voltage Protection (OVP)		OFF	OFF	ON	ON	$TZE > 5V$	$VDD < 6V$ → $VDD > 10.2V$	Latch-off
Over Load Protection (OL)	Shutdown/Retry Mode			OFF	OFF	$I_{FB} < 1.5\mu A$ $32.6k < R_{OTM} < 100k\Omega$	$I_{FB} > 1.5\mu A$	Shutdown Retry OL Timer (250ms)
		OFF	OFF	ON	OFF			Shutdown Retry Fault (750ms)
	Latch-Off Mode	OFF	OFF	ON	ON	$I_{FB} < 1.5\mu A$ $150k < R_{OTM} < 459k\Omega$	$VDD < 6V$ → $VDD > 10.2V$	Latch-off
Stopped state of Low Power Mode		OFF	OFF	ON	OFF	$I_{FB} > 280\mu A$	$I_{FB} < 255\mu A$	-
Over Temperature Protection (OTP)		OFF	OFF	ON	OFF	$T_j > +150^\circ C$	$T_j < +125^\circ C$	-

■ I/O PIN EQUIVALENT CIRCUIT DIAGRAM

Pin No.	Pin Name	Equivalent Circuit Diagram
1	FB	
2	TZE	
3	PCL	
4	OTM	

MB39C601



■ USAGE PRECAUTION

1. Do not configure the IC over the maximum ratings.

If the IC is used over the maximum ratings, the LSI may be permanently damaged.

It is preferable for the device to normally operate within the recommended usage conditions. Usage outside of these conditions can have an adverse effect on the reliability of the LSI.

2. Use the device within the recommended operating conditions.

The recommended values guarantee the normal LSI operation under the recommended operating conditions.

The electrical ratings are guaranteed when the device is used within the recommended operating conditions and under the conditions stated for each item.

3. Printed circuit board ground lines should be set up with consideration for common impedance.

4. Take appropriate measures against static electricity.

- Containers for semiconductor materials should have anti-static protection or be made of conductive material.
- After mounting, printed circuit boards should be stored and shipped in conductive bags or containers.
- Work platforms, tools, and instruments should be properly grounded.
- Working personnel should be grounded with resistance of 250 k Ω to 1 M Ω in serial between body and ground.

5. Do not apply negative voltages.

The use of negative voltages below - 0.3 V may make the parasitic transistor activated to the LSI, and can cause malfunctions.

MB39C601

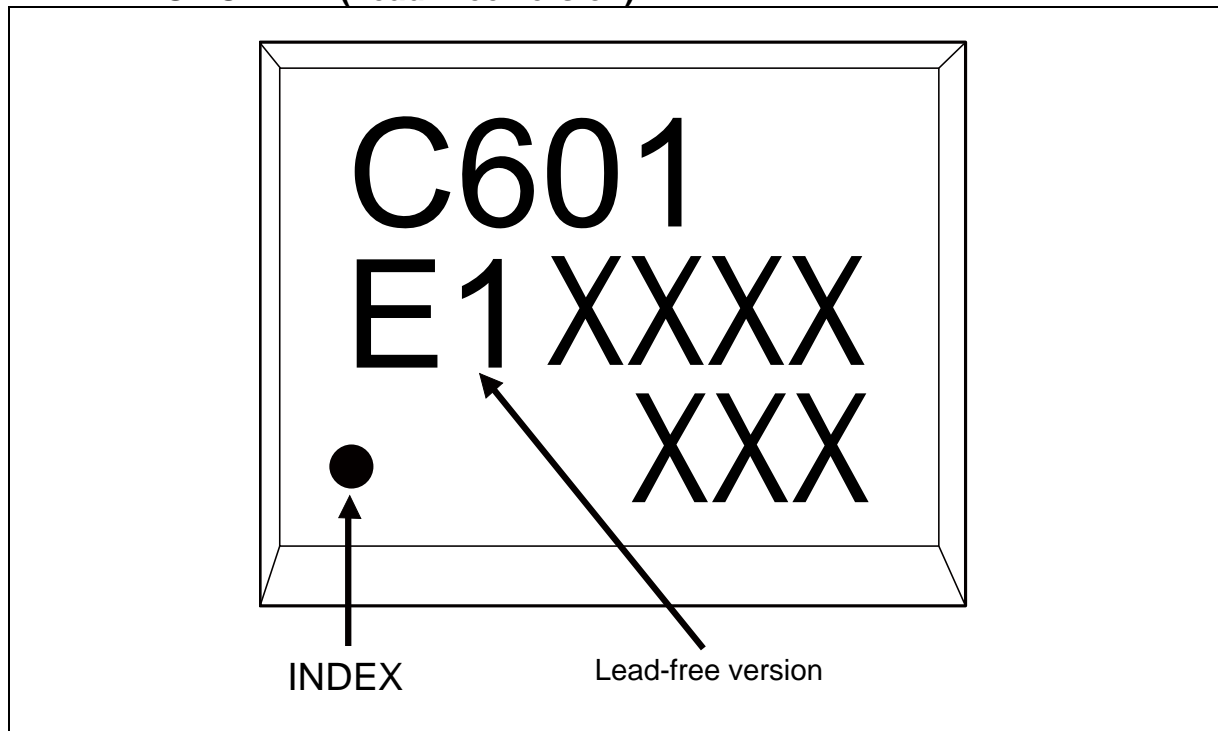
■ ORDERING INFORMATION

Part number	Package	Remarks
MB39C601PNF	8-pin plastic SOP (FPT-8P-M02)	

■ RoHS COMPLIANCE INFORMATION OF LEAD (Pb) FREE VERSION

The LSI products of FUJITSU SEMICONDUCTOR with “E1” are compliant with RoHS Directive, and has observed the standard of lead, cadmium, mercury, Hexavalent chromium, polybrominated biphenyls (PBB), and polybrominated diphenyl ethers (PBDE). A product whose part number has trailing characters “E1” is RoHS compliant.

■ MARKING FORMAT (Lead Free version)



MB39C601

■ LABELING SAMPLE (Lead free version)

Lead-free mark
JEITA logo JEDEC logo

MB123456P - 789 - GE1
(3N) 1MB123456P-789-GE1 1000
QC PASS

(3N)2 1561190005 107210
1,000 PCS
QC PASS

MB123456P - 789 - GE1
2006/03/01 ASSEMBLED IN JAPAN

MB123456P - 789 - GE1
1561190005 1/1 0605 - Z01A 1000

The part number of a lead-free product has the trailing characters "E1".

"ASSEMBLED IN CHINA" is printed on the label of a product assembled in China.

■ MB39C601PNF RECOMMENDED CONDITIONS OF MOISTURE SENSITIVITY LEVEL

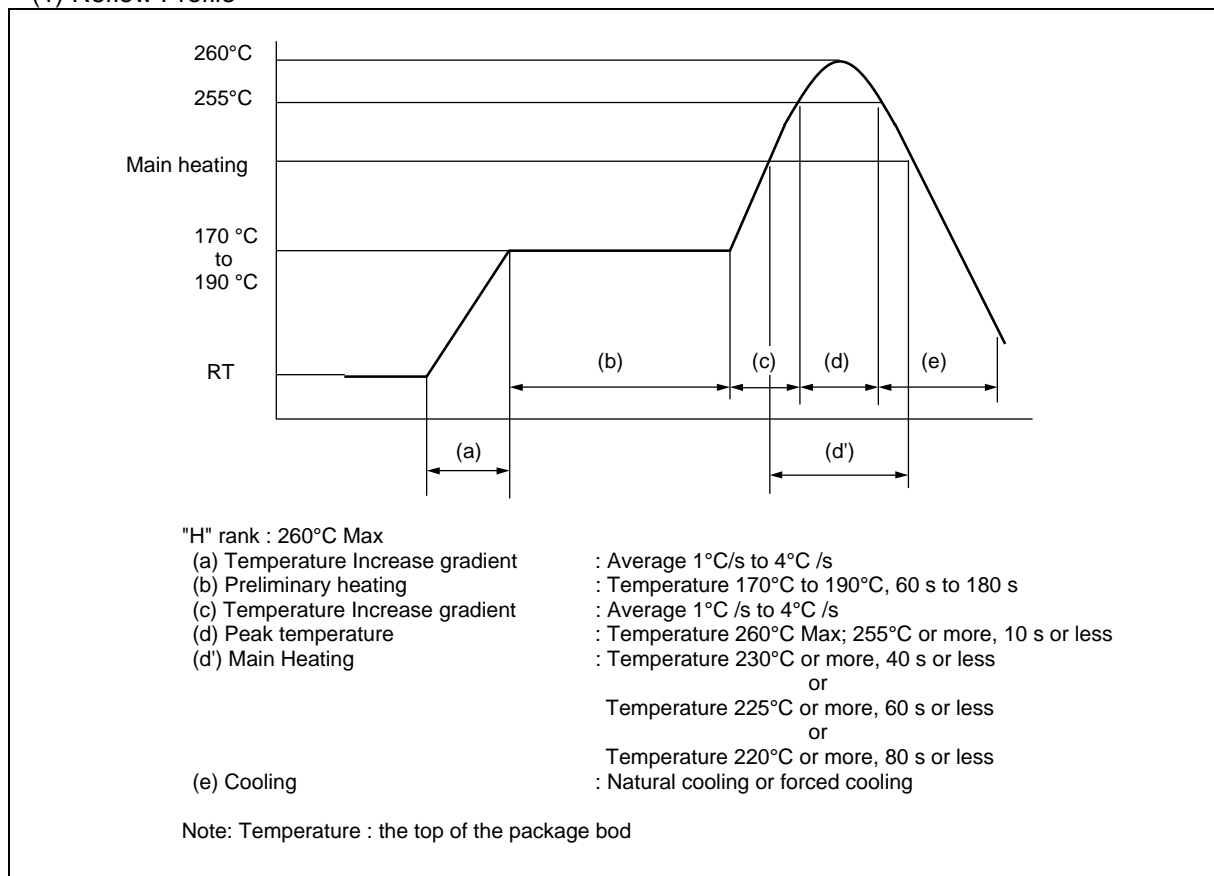
[FUJITSU SEMICONDUCTOR Recommended Mounting Conditions]

Recommended Reflow Condition

Item	Condition	
Mounting Method	IR (infrared reflow), warm air reflow	
Mounting times	2 times	
Storage period	Before opening	Please use it within two years after manufacture.
	From opening to the 2nd reflow	Less than 8 days
	When the storage period after opening was exceeded	Please process within 8 days after baking (125°C ±3°C, 24H+ 2H/—0H) . Baking can be performed up to two times.
Storage conditions	5°C to 30°C, 70% RH or less (the lowest possible humidity)	

[Mounting Conditions]

(1) Reflow Profile



(2) JEDEC Condition: Moisture Sensitivity Level 3 (IPC/JEDEC J-STD-020D)

MB39C601

(3) Recommended manual soldering (partial heating method)

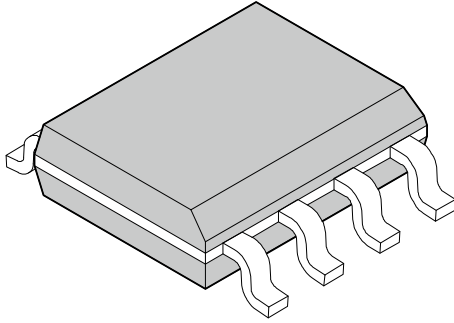
Item	Condition	
Storage period	Before opening	Within two years after manufacture
	Between opening and mounting	Within two years after manufacture (No need to control moisture during the storage period because of the partial heating method.)
Storage conditions	5°C to 30°C, 70% RH or less (the lowest possible humidity)	
Mounting conditions	Temperature at the tip of a soldering iron: 400°C Max Time: Five seconds or below per pin*	

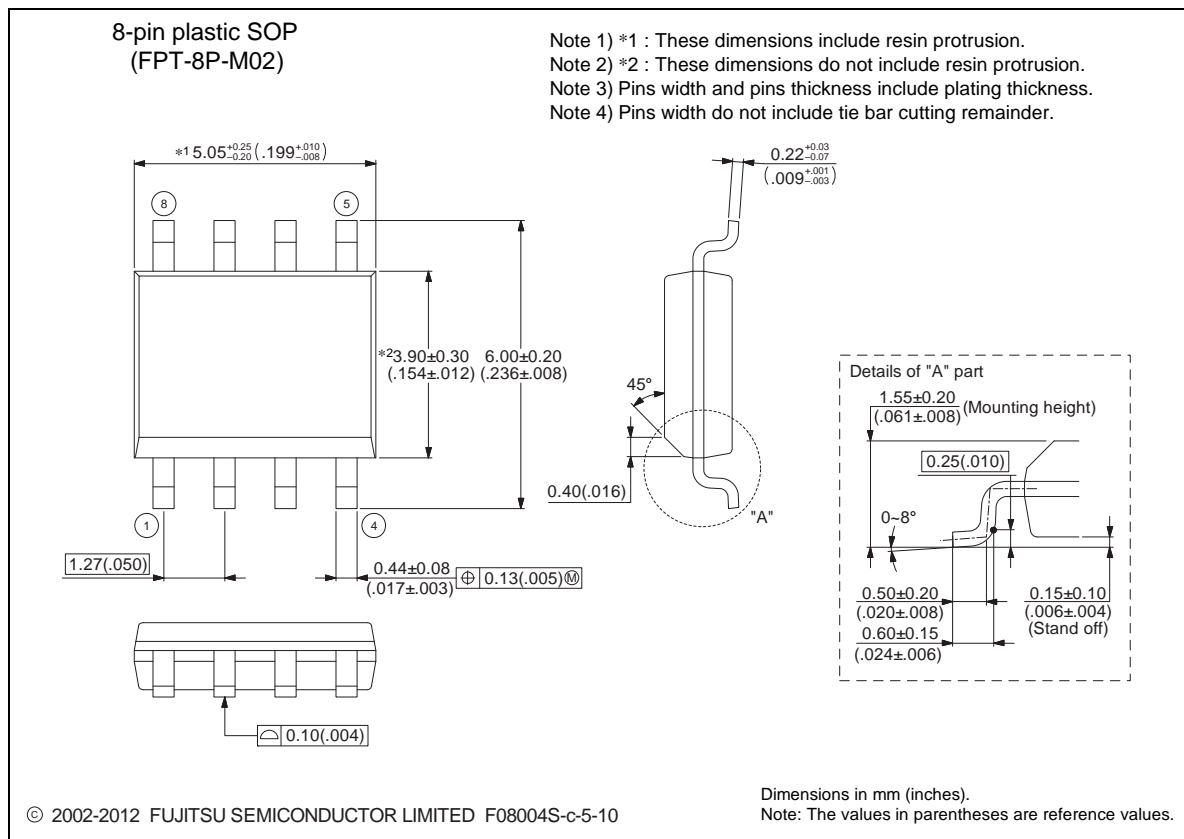
*: Make sure that the tip of a soldering iron does not come in contact with the package body.

(4) Recommended dip soldering

Item	Condition	
Mounting times	1 time	
Storage period	Before opening	Please use it within two years after manufacture.
	From opening and mounting	Less than 14 days
	When the storage period after opening was exceeded	Please process within 14 days after baking (125°C ±3°C, 24H+ 2H/−0H) . Baking can be performed up to two times.
Storage conditions	5°C to 30°C, 70% RH or less (the lowest possible humidity)	
Mounting condition	Temperature at soldering tub: 260°C Max Time: Five seconds or below	

■ PACKAGE DIMENSIONS

<p style="text-align: center;">8-pin plastic SOP</p>  <p style="text-align: center;">(FPT-8P-M02)</p>	Lead pitch	1.27 mm
	Package width × package length	3.9 mm × 5.05 mm
	Lead shape	Gullwing
	Sealing method	Plastic mold
	Mounting height	1.75 mm MAX
	Weight	0.06 g



Please check the latest package dimension at the following URL.
<http://edevice.fujitsu.com/package/en-search/>

MEMO

MEMO

FUJITSU SEMICONDUCTOR LIMITED

Nomura Fudosan Shin-yokohama Bldg. 10-23, Shin-yokohama 2-Chome,
Kohoku-ku Yokohama Kanagawa 222-0033, Japan

Tel: +81-45-415-5858

<http://jp.fujitsu.com/fsl/en/>

For further information please contact:

North and South America

FUJITSU SEMICONDUCTOR AMERICA, INC.
1250 E. Arques Avenue, M/S 333
Sunnyvale, CA 94085-5401, U.S.A.
Tel: +1-408-737-5600 Fax: +1-408-737-5999
<http://us.fujitsu.com/micro/>

Asia Pacific

FUJITSU SEMICONDUCTOR ASIA PTE. LTD.
151 Lorong Chuan,
#05-08 New Tech Park 556741 Singapore
Tel : +65-6281-0770 Fax : +65-6281-0220
<http://sg.fujitsu.com/semiconductor/>

Europe

FUJITSU SEMICONDUCTOR EUROPE GmbH
Pittlerstrasse 47, 63225 Langen, Germany
Tel: +49-6103-690-0 Fax: +49-6103-690-122
<http://emea.fujitsu.com/semiconductor/>

FUJITSU SEMICONDUCTOR SHANGHAI CO., LTD.
30F, Kerry Parkside, 1155 Fang Dian Road,
Pudong District, Shanghai 201204, China
Tel : +86-21-6146-3688 Fax : +86-21-6146-3660
<http://cn.fujitsu.com/fss/>

Korea

FUJITSU SEMICONDUCTOR KOREA LTD.
902 Kosmo Tower Building, 1002 Daechi-Dong,
Gangnam-Gu, Seoul 135-280, Republic of Korea
Tel: +82-2-3484-7100 Fax: +82-2-3484-7111
<http://kr.fujitsu.com/fsk/>

FUJITSU SEMICONDUCTOR PACIFIC ASIA LTD.
2/F, Green 18 Building, Hong Kong Science Park,
Shatin, N.T., Hong Kong
Tel : +852-2736-3232 Fax : +852-2314-4207
<http://cn.fujitsu.com/fsp/>

Specifications are subject to change without notice. For further information please contact each office.

All Rights Reserved.

The contents of this document are subject to change without notice.

Customers are advised to consult with sales representatives before ordering.

The information, such as descriptions of function and application circuit examples, in this document are presented solely for the purpose of reference to show examples of operations and uses of FUJITSU SEMICONDUCTOR device; FUJITSU SEMICONDUCTOR does not warrant proper operation of the device with respect to use based on such information. When you develop equipment incorporating the device based on such information, you must assume any responsibility arising out of such use of the information.

FUJITSU SEMICONDUCTOR assumes no liability for any damages whatsoever arising out of the use of the information. Any information in this document, including descriptions of function and schematic diagrams, shall not be construed as license of the use or exercise of any intellectual property right, such as patent right or copyright, or any other right of FUJITSU SEMICONDUCTOR or any third party or does FUJITSU SEMICONDUCTOR warrant non-infringement of any third-party's intellectual property right or other right by using such information. FUJITSU SEMICONDUCTOR assumes no liability for any infringement of the intellectual property rights or other rights of third parties which would result from the use of information contained herein.

The products described in this document are designed, developed and manufactured as contemplated for general use, including without limitation, ordinary industrial use, general office use, personal use, and household use, but are not designed, developed and manufactured as contemplated (1) for use accompanying fatal risks or dangers that, unless extremely high safety is secured, could have a serious effect to the public, and could lead directly to death, personal injury, severe physical damage or other loss (i.e., nuclear reaction control in nuclear facility, aircraft flight control, air traffic control, mass transport control, medical life support system, missile launch control in weapon system), or (2) for use requiring extremely high reliability (i.e., submersible repeater and artificial satellite).

Please note that FUJITSU SEMICONDUCTOR will not be liable against you and/or any third party for any claims or damages arising in connection with above-mentioned uses of the products.

Any semiconductor devices have an inherent chance of failure. You must protect against injury, damage or loss from such failures by incorporating safety design measures into your facility and equipment such as redundancy, fire protection, and prevention of over-current levels and other abnormal operating conditions.

Exportation/release of any products described in this document may require necessary procedures in accordance with the regulations of the Foreign Exchange and Foreign Trade Control Law of Japan and/or US export control laws.

The company names and brand names herein are the trademarks or registered trademarks of their respective owners.