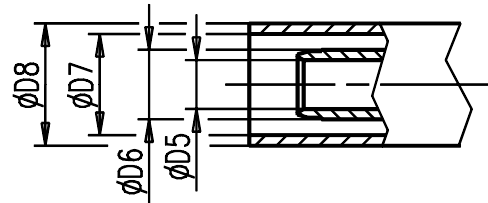
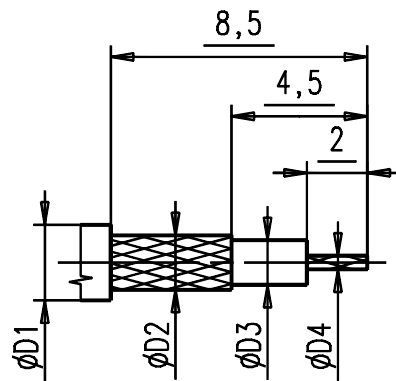
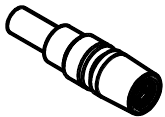


Kabelzuschnitt
Stripping dimension



M 1:1
S 1:1



Fuer Kabel /
For cable

Gr.	Type Typ	phi D1 max.	phi D2 max.	phi D3 max.	phi D4 max.	phi D5	phi D6	phi D7	phi D8	Crimp Aussen/out	Crimp Innen/in
1											
2	Flex 2 / 75 Ohm	2,80	2,24	1,67	0,51	1,70	2,60	3,20	3,80	3,25	
3											
4											
5											

IMS CONNECTOR
SYSTEMS

general tolerance
ISO 2768
mH

scale: 5:1

Assembly instruction:
Stripping dimension:

date name
10.01.00 Hogg
generate
checked
Norm
30364

Kabelbuchse
Cable jack



2951.11.2410.02'

Rev.

nr. rev. alteration date name