

TOROIDAL - 2, 3, 4, OUTPUTS DIVIDERS, POWER

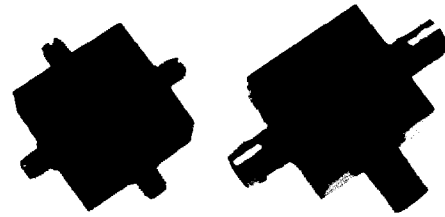
SERIES PSK

GENERAL SPECIFICATIONS:

VSWR: 1.30 Typical
Impedance: 50 ohms nominal
Matched Power Rating: 1 Watt Max.
Weight: 5 Grams
 Connector Type, 42 Grams
Temperature Range: -55 to 100°C (operating & storage)
Finish: Grey Paint

ENVIRONMENTAL SPECS: MIL-STD-202E

Moisture Resistance: Method 106D
Salt Spray: Method 101D
Vibration High Frequency: Method 204C
Shock Test: Method 213B
 Workmanship in Accordance with MIL-STD-455D
 Requirements 5 and 9

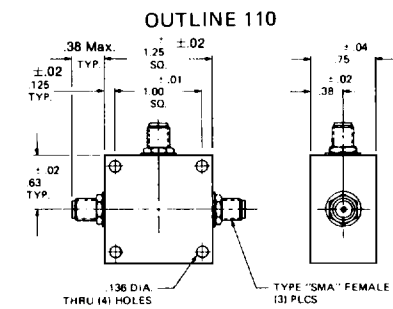
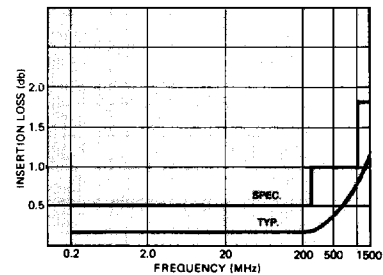
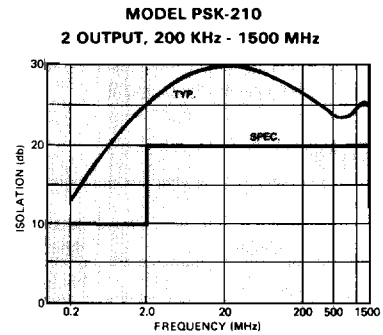


2-4 OUTPUTS

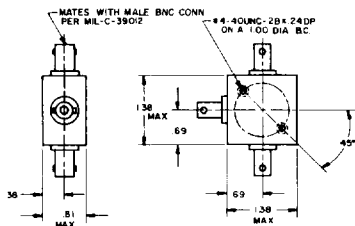
No. of Outputs	Model*	Frequency (MHz)	Ins. Loss (dB Max.)	Isolation (dB Min.)	Amp. Bal. (±dB)	Phase Balance (±Deg.)	Outline
2	PSK-210	0.2-1200	1.3	20	0.4	9	110
	PSK-211	0.01-100	0.6	20	0.1	1	110
	PSK-212	10-1000	1.2	24	0.2	3	110
	PSK-213*	10-400	0.5	30	0.1	2	117
	PSK-213*	400-500	0.5	25	0.1	2	117
3	PSK-270**	55-85	0.5	25	0.1	1	110
	PSK-310	0.25-500	1.2	20	0.4	4	111
4	PSK-311	0.01-25	0.5	20	0.2	1	111
	PSK-410	0.5-1000	1.8	18	0.5	9	112
	PSK-411	1-100	1.0	20	0.1	1	112
	PSK-413	10-500	1.0	25	0.2	4	112
	PSK-470**	55-85	1.0	25	0.1	1	112

**75 Ohms

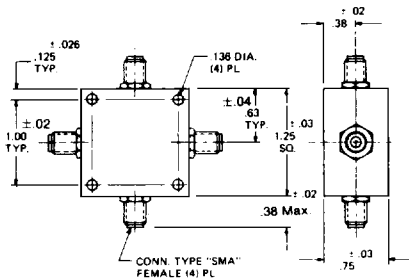
*Specify connector type with last character of model no.
 M = SMA, B = BNC, T = TNC, N = Type N



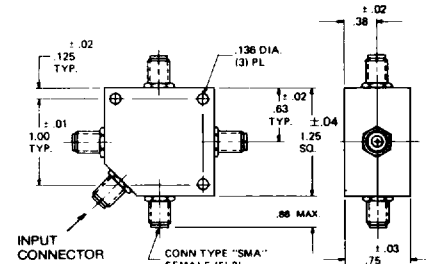
OUTLINE 117



OUTLINE 111



OUTLINE 112



**KDI/triangle
ELECTRONICS**

31 Farinella Drive • East Hanover, NJ 07936 • Phone: (201) 884-1423
 TWX: (710) 986-8202 • FAX: (201) 884-0445