

OCXO

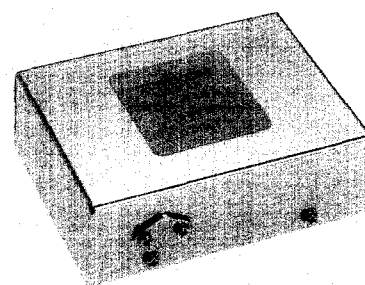
TCO-646A

Features

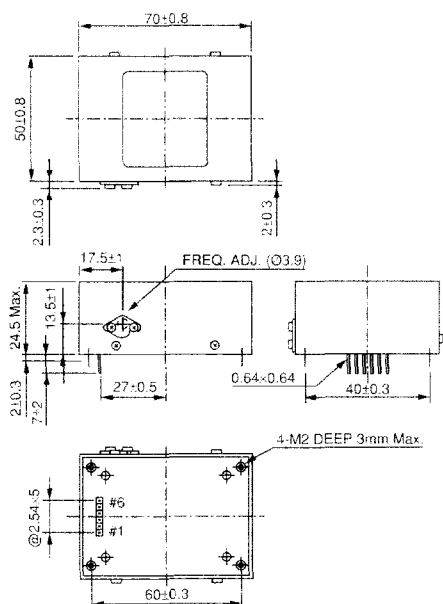
- Excellent long and short-term stability
- Low SSB phase noise
- Fast warm-up
- Low profile

Specifications

Type		TCO-646A
Standard frequency		5MHz
Frequency stability	vs. Temperature	$\pm 1.5 \times 10^{-6}/0$ to $+60^{\circ}\text{C}$ (referenced to $+25^{\circ}\text{C}$)
	vs. Supply voltage	$\pm 5 \times 10^{-6}/+12\text{V} \pm 5\%$
	Aging	$\pm 5 \times 10^{-6}/\text{day}$ (referenced to the frequency after 72 hours operation) $\pm 2 \times 10^{-6}/\text{year}$ (referenced to the frequency after 72 hours operation)
Warm-up		$\pm 5 \times 10^{-6}$ / after 30 minutes operation at $+25^{\circ}\text{C}$
Output		TTL compatible (Fanout-2) / Symmetry 40 to 60% (at $+1.4\text{V}$)
Supply voltage		$+12\text{V} \pm 5\%$
Current drain		Warm-up : 500mA Max Steady state at 25°C : 300mA Max
Frequency adjustment		$\pm 1 \times 10^{-7}$ Min by internal trimmer
Weight		200g Max



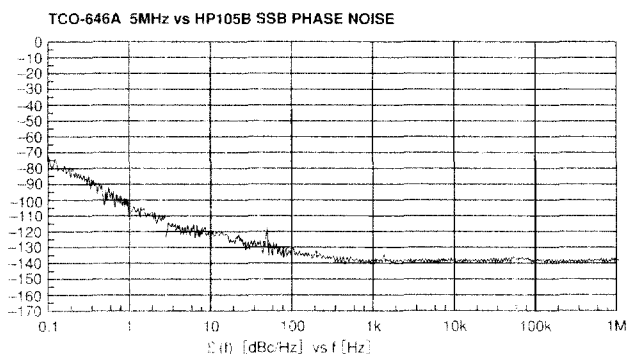
PACKAGE OUTLINES [Dimensions in mm]



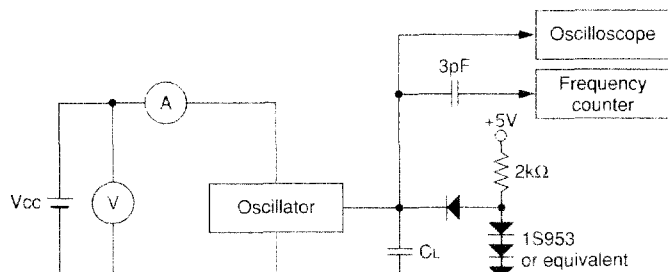
Pin connections

1	Output
2	Monitor
3	GND (COMMON AND CASE)
4	Vcc
5	NC
3	NC

Electrical Data



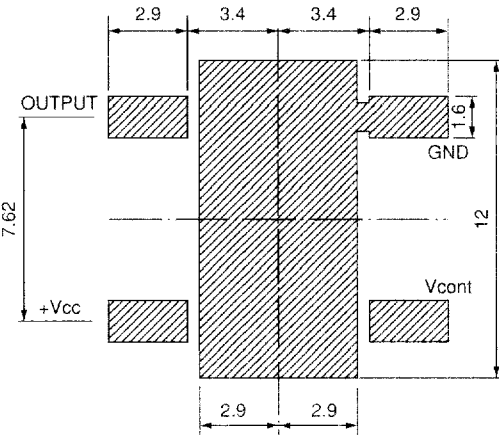
Test Circuit



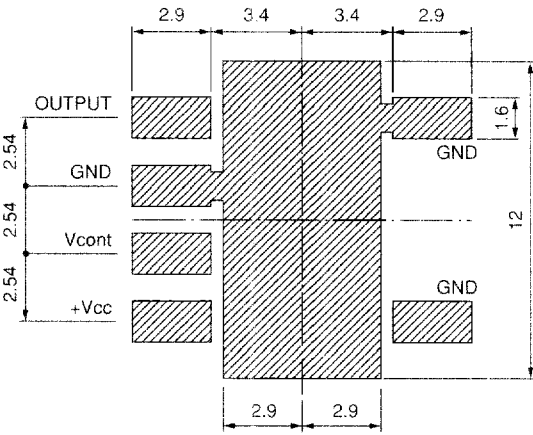
CL: Total fixture and probe capacitance= 15pF max.

FOOT PATTERN [Dimensions in mm]

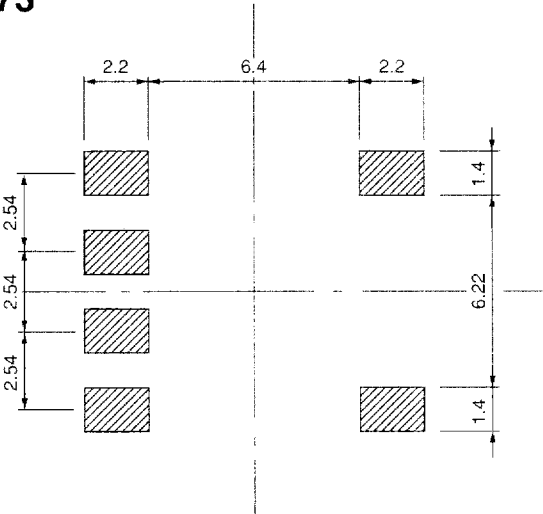
TCO-980, 982, 986



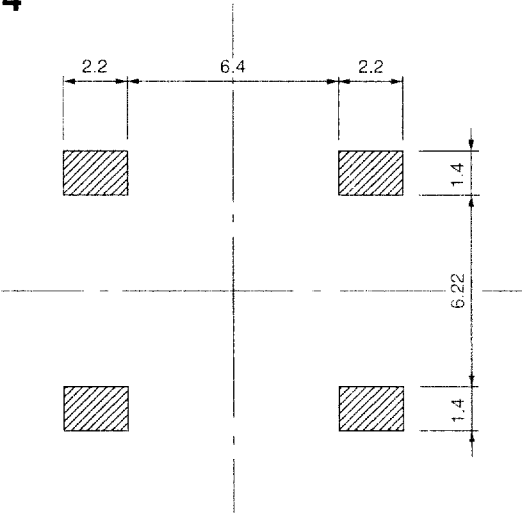
TCO-981, 983, 987



TCO-973



TCO-974



TCO-570

